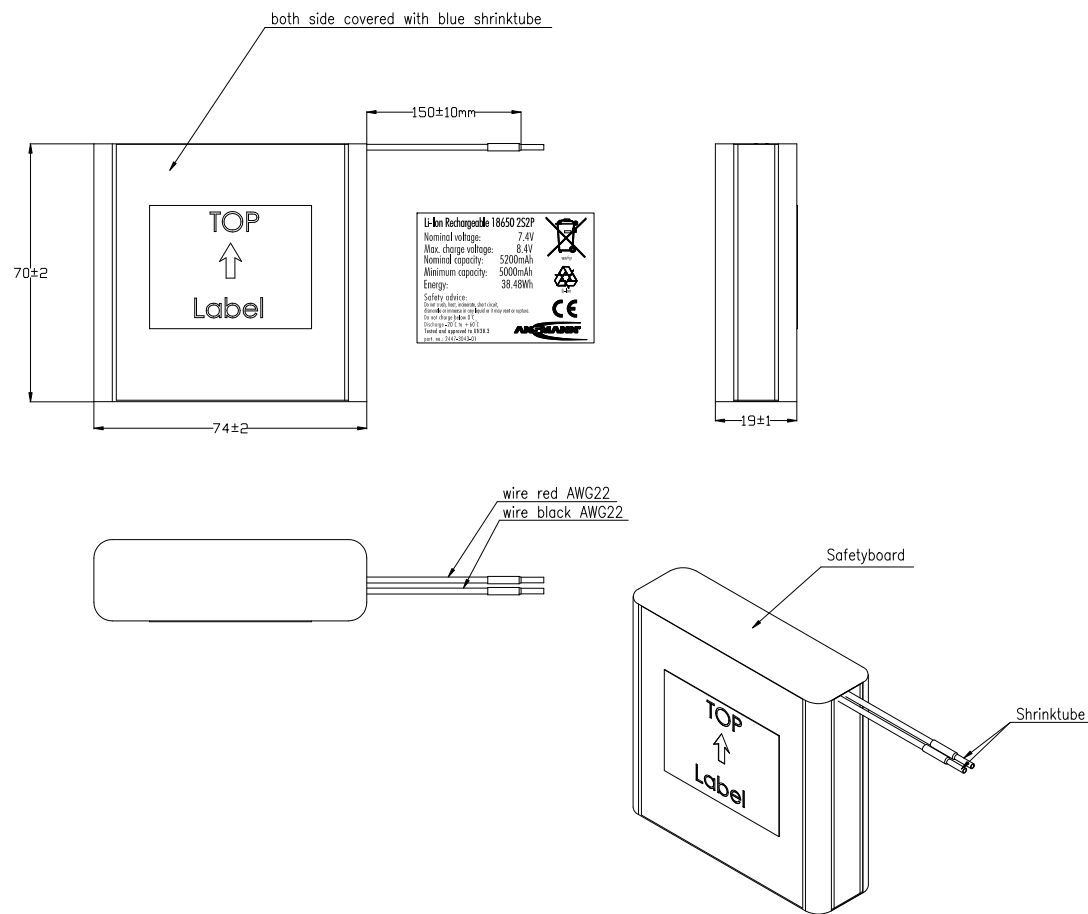


The supplier acknowledges that, with the acceptance of this drawing, he is obliged to manufacture the described part in accordance with the drawing in accordance with the requirements of the customer. Any deviations from the drawing must be reported to the customer.

This drawing may not be used, reproduced or made available in any form without the written or prior written approval.

Technische Daten/ technical data	:	Akkupack/ Battery pack
Chemie/ chemistry	:	Li-Ion
Zellentyp/ Cell type	:	LG B4
Zellenzahl/ no. of cells	:	4 Zellen/ cells 18650 2S2P
Kapazität/ capacity	:	nom. 5200mAh discharge at 0.2C min. 5000mAh discharge at 0.2C ta:20°C; EV(Discharge End Voltage): 5.5V
Innenwiderstand/ impedance	:	< 120mOhm (battery and safetyboard)
Nominalspannung/ nominal voltage	:	7.4V
Standard Ladespannung/ standard charge voltage	:	8.4V±1%
Nominaler Ladestrom/ nominal charge current	:	0.5C
Maximaler Ladestrom/ max. charge current	:	5000mA (limited by safetyboard)
Ladeendstrom/ charge end current	:	0.01C recommended
Maximaler Entladestrom/ maximum discharge current	:	5000mA (limited by safetyboard)
Anwendungstemperaturbereich/ ambient temperature range	:	0°C...+45°C charge -20°C...+60°C discharge -20°C...+30°C storage max. 1 year
Standards/	:	UN 3480, Subsection 38.3 All cells and battery packs type tested according to UN manual of test and criteria subsection 38.3
Technische Daten/ technical data	:	Sicherheitschaltung/ safety board
Abschaltspannung/ over charge voltage detection	:	8.6V±50mV
Wiedereinschaltspannung/ over charge release voltage	:	8.2V±100mV
Entladeabschaltspannung/ over discharge detection voltage	:	4.8V±100mV
Wiedereinschaltspannung/ over discharge release voltage	:	6V±100mV
Nominaler Entladestrom/ nominal discharge current	:	5A continuous
Entlade Abschaltstrom/ discharge cut off current	:	13A± 3A
Kurzschlusschutz/ short circuit protection	:	gegen äußeren Kurzschluss/ against external short circuit
Rückstellkriterium/ release condition	:	Last trennen, Aktiv nach Anladen/ cut load, release after charging up
Standards	:	CE



Verwendungsbereich/Application range für Anfrage/for inquiry AN-IS-2012-00431	Zul. Abweichung/ Allowable deviation	Oberfläche/ Surface	Maßstab/Scale (DIN A2): 1:1	Gewicht/Weight
	Allgemeintoleranz DIN ISO 2768-m		Werkstoff/Work material, Modell-Nr.	
	2013	Datum/Date	Zeichnungsname/Drawing name	
	Zeichner/ Drawn by	23.10.	Li-Ion Battery 7.4V 5200mAh	
		JE	with safetyboard	
			Zeichnungsnummer/Drawing number	
			2447-3043-01	
			Blatt/ Sheet	
			1	
VO technical data corrected	24.06.15 JH	ANS-MANN		
Version Änderung/Change	Datum/Date Name	Ursprung/Origin Proj. IS-2012-00431	Ersatz für/Replaced by	Ersatz durch/Replacement through