

# Panelboards & Motor Starters

DPD Series: Distribution Panelboard – Flameproof



8 Circuit Panelboard



### Compliance Data:

ATEX - IECEx:

Zone 1&2 – 21&22	II 2 GD	ATEX	IECEx	CE
Ex d IIB	T6 to T4	Ex tD A21	T80°C to T130°C	IP66 – IK10

### Electrical Data:

Voltage	Amperage	Frequency		
Up to 415V	Up to 160A	50/60Hz		

### Operating Temperature:

-20°C to +55°C (CF70B)	-40°C to +55°C (CF50B)	-50°C to +55°C (CF60B)		
------------------------	------------------------	------------------------	--	--

PANELBOARDS & MOTOR STARTERS

# Panelboards & Motor Starters

## DPD Series: Distribution Panelboard – Flameproof

Zone 1 & 2 – 21 & 22

Ex II 2 GD

ATEX / IECEx

IP66 / IK10

### Applications:

- Protection and control of electrical equipment in hazardous areas where ignitable vapors, gases or highly combustible dusts are present.
- For installation in chemical and petrochemical plants, refineries and other process industries in Zone 1 & 2 and Zone 21 & 22.
- These compact units provide a centrally controlled switching system
- Lighting panelboards are available in 6, 12, 18 and 24 circuits.
- Heat tracing panelboards are available in 6, 12, 18 and 20 circuits.

### Features:

Available versions:

- 3- or 4-Pole isolator switch or main breaker.
  - Branch Circuit Breaker available with B, C or D tripping curve.
  - GFI Branch Circuit Breaker available with B, C or D tripping curves.
- 1, 2, 3, 4 and 1+N poles branch circuit breakers.
- Isolator and breaker handles included as standard, can be padlocked in "OFF" position.
- Copper bus-bar as standard.

- Fully prewired on outgoing terminal block.
- M8 earth-crossing terminal.
- Hinged door.
- 4 fixing lugs.
- Cable glands and plugs to be ordered separately.

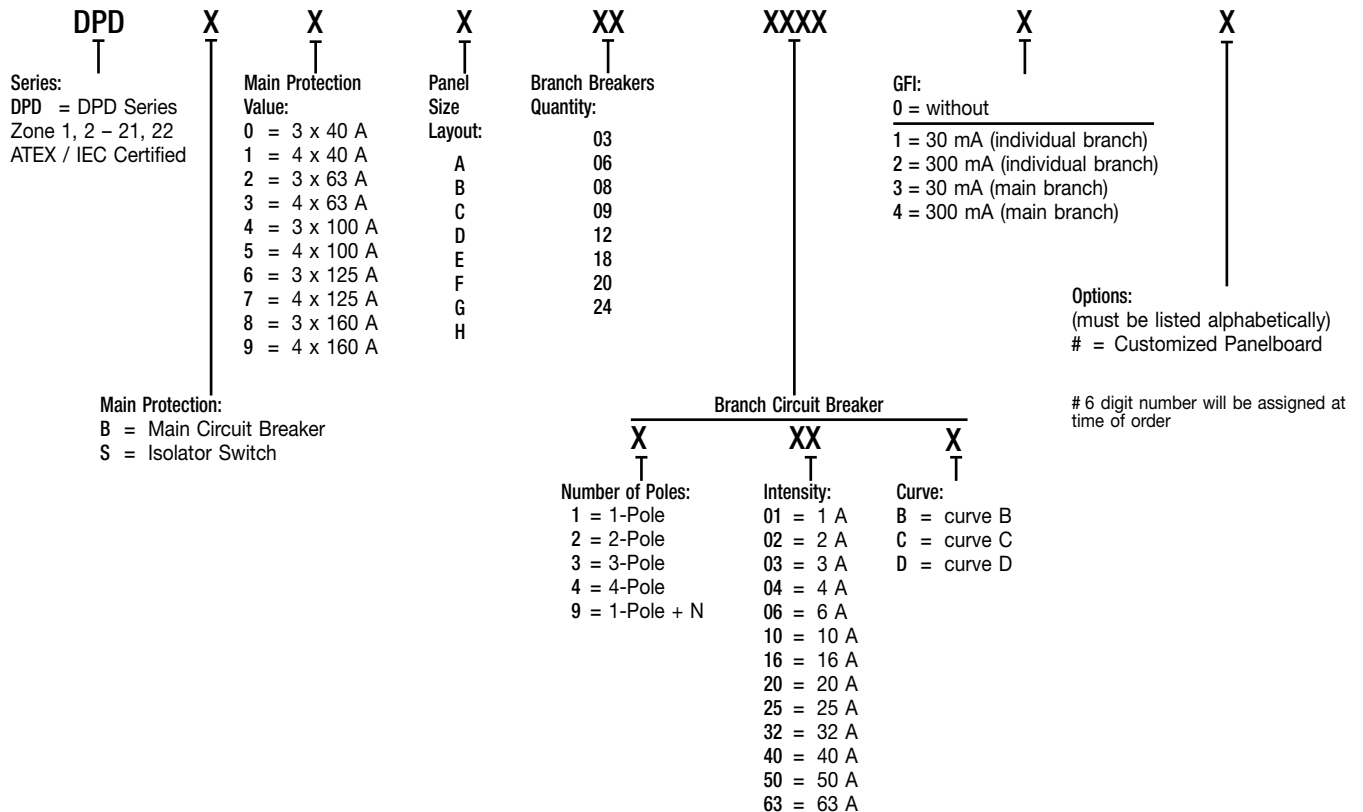
### Standard Material of Fixtures:

- Gray marine grade aluminum alloy housing.
- Stainless steel hardware.
- Copper bus-bar.

### Options:

- Other rating and tripping curves.
- Other voltage.
- Indirect cable-entries available through Ex e connection enclosure.
- Switch rack assembly.

### Catalog Number Logic:



# Panelboards & Motor Starters

## DPD Series: Distribution Panelboard – Flameproof

Zone 1 & 2 – 21 & 22

II 2 GD

ATEX / IECEx

IP66 / IK10

### Ordering Information:

#### Distribution Panelboard with Branch Circuit Breakers (for Lighting Circuits, etc.):

4-pole main isolator switch and 2-pole Branch Circuit Breakers Tripping Curve C wired on terminals.

Type	Main Switch	Branch Circuit Breakers 2P - Curve C		Layout Panel	Cable Entries	Volume (dm <sup>3</sup> )	Weight (kg)	Catalog Number
		Quantity	Rating					
CF50B	4 x 63 A	6	2P 16 A	A	1 x M32 - 6 x M20	100	240	DPDS3 A 06216C0
CF60B	4 x 63 A	12	2P 16 A	B	1 x M32 - 12 x M20	150	378	DPDS3 B 12216C0
CF70B	4 x 125 A	18	2P 16 A	C	1 x M40 - 18 x M20	180	382	DPDS7 C 18216C0
CF70B	4 x 160 A	24	2P 16 A	D	1 x M50 - 24 x M20	180	382	DPDS9 D 24216C0

#### Distribution Panelboard with GFI Branch Circuit Breakers (for Heat Tracing Circuits, etc.):

4-pole main isolator switch and 1-pole + N branch circuit breakers with GFI Branch Circuit Breakers Tripping Curve C wired on terminals.

Type	Main Switch	Branch Circuit Breakers 1P+N - Curve C		Layout Panel	Cable Entries	Volume (dm <sup>3</sup> )	Weight (kg)	Catalog Number
		Quantity	Rating					
CF50B	4 x 63 A	6	16 A/30 mA	E	1 x M32 - 6 x M20	100	240	DPDS3 E 06916C1
CF60B	4 x 63 A	12	16 A/30 mA	F	1 x M32 - 12 x M20	150	378	DPDS3 F 12916C1
CF70B	4 x 125 A	18	16 A/30 mA	G	1 x M40 - 18 x M20	180	382	DPDS7 G 18916C1
CF70B	4 x 160 A	20	16 A/30 mA	H	1 x M50 - 20 x M20	180	382	DPDS9 H 20916C1

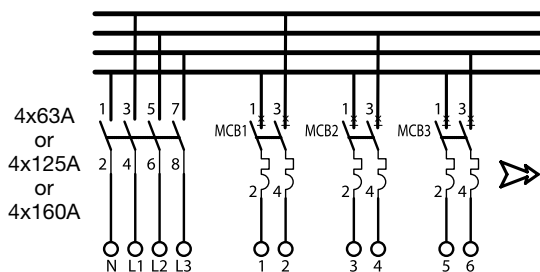
#### Distribution Panelboard with GFI Branch Circuit Breakers (for Heat Tracing Circuits, etc.):

4-pole main isolator switch and 1-pole + N branch circuit breakers with GFI Branch Circuit Breakers Tripping Curve B wired on terminals.

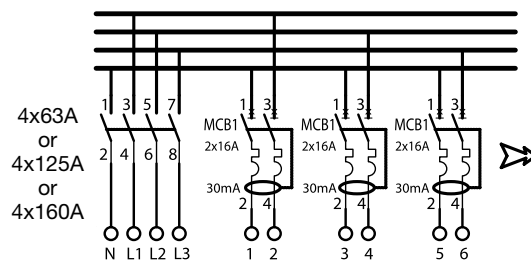
Type	Main Switch	Branch Circuit Breakers 1P+N - Curve B		Layout Panel	Cable Entries	Volume (dm <sup>3</sup> )	Weight (kg)	Catalog Number
		Quantity	Rating					
CF50B	4 x 63 A	6	16 A/30 mA	E	1 x M32 - 6 x M20	100	240	DPDS3 E 06916B1
CF60B	4 x 63 A	12	16 A/30 mA	F	1 x M32 - 12 x M20	150	378	DPDS3 F 12916B1
CF70B	4 x 125 A	18	16 A/30 mA	G	1 x M40 - 18 x M20	180	382	DPDS7 G 18916B1
CF70B	4 x 160 A	20	16 A/30 mA	H	1 x M50 - 20 x M20	180	382	DPDS9 H 20916B1

### Wiring Diagram:

Branch Circuit Breaker Versions



GFI Branch Circuit Breaker Versions



# Panelboards & Motor Starters

## DPD Series: Distribution Panelboard – Flameproof

Zone 1 & 2 – 21 & 22

Ⓜ II 2 GD

ATEX / IECEx

IP66 / IK10

### Technical Data:

Incoming				GFI Branch Circuit Breaker Outgoing 16 A
Main Contacts	63 Amps	125 Amps	160 Amps	
Rated Insulation Voltage (Ui)	690 V	800 V	800 V	400 Vac 230/400 Vac 16 A / 30 mA 4 kV 10 kA / 400 V IEC 947.2
Rated Operating Voltage (Ue)	415 V / 500 V / 690 V	415 V / 500 V / 690 V	415 V / 500 V / 690 V	
Rated Operating Current (Ie)	63 A / 63 A / 40 A	125 A	160 A / 160 A / 125 A	
Rated Surge Voltage (Uimp)	8 kV	8 kV	8 kV	
Short Circuit Resistance (Icu)	50 kA (with fuse)	63 kA (with fuse)	80 kA (with fuse)	
Switching Capacity AC 21 A	415 V	63 A	125 A	
	500 V	63 A	125 A	
	690 V	63 A	125 A	
AC 22 A	415 V	63 A	125 A	
	500 V	63 A	125 A	
	690 V	40 A	80 A	
AC 23 A	415 V	63 A / 30 kW	125 A / 55 kW	
	500 V	63 A / 30 kW	100 A / 55 kW	
	690 V	40 A / 30 kW	80 A / 75 kW	
Termination (Flexible / Solid)	4 to 35 mm <sup>2</sup> / 50 mm <sup>2</sup>	4 to 50 mm <sup>2</sup> / 70 mm <sup>2</sup>	4 to 50 mm <sup>2</sup> / 70 mm <sup>2</sup>	0.5 to 4 mm <sup>2</sup> / 1.5 to 6 mm <sup>2</sup>

### Compliances:

Hazardous Area	Gas	Dust
Certification Type	CF	
Zones	1–2	21–22
Conforming to ATEX 94/9/CE	CE 0081Ⓜ II 2 G	CE 0081Ⓜ II 2 D
Symbol of Protection ATEX	Ex d IIB	Ex tD A21
Symbol of Protection IEC		
T Rating	T6 to T4	NA
Surface Temperature	NA	T80°C to T130°C
Ambient Temperature	-20°C to +55°C (CF70B) -40°C to +55°C (CF50B) -50°C to +55°C (CF60B)	
CE Declaration of Conformity	50229	
ATEX Certificate	LCIE 02 ATEX 6057X	
IECEx Certificate	IECEx LCI 08.023X	
Other Certifications	GOST	
Ingress Protection (solid and liquid)	IP66	
Impact Resistance (shock)	IK10	
Internal Volume	> 2 dm <sup>3</sup> (2 liters)	

### Standards:

Ex Standards	EN / IEC 60079-0; 60079-1; 61241-0; 61241-1
Product Standards	EN / IEC 60947-1; 60947-2; 60947-3
EMC Standards	/
Other Standards	EN / IEC 60529 (IP); 62262 (IK)

# Panelboards & Motor Starters

## DPD Series: Distribution Panelboard – Flameproof

Zone 1 & 2 – 21 & 22

II 2 GD

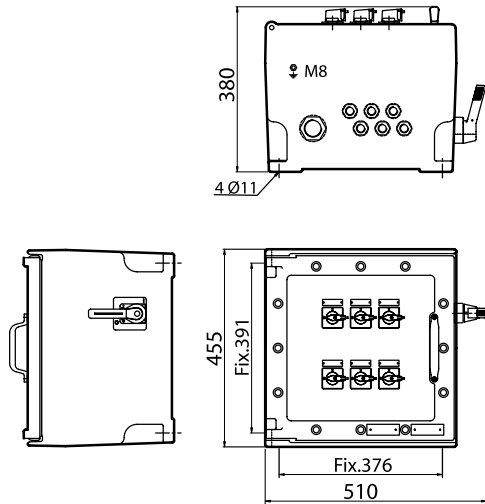
ATEX / IECEx

IP66 / IK10

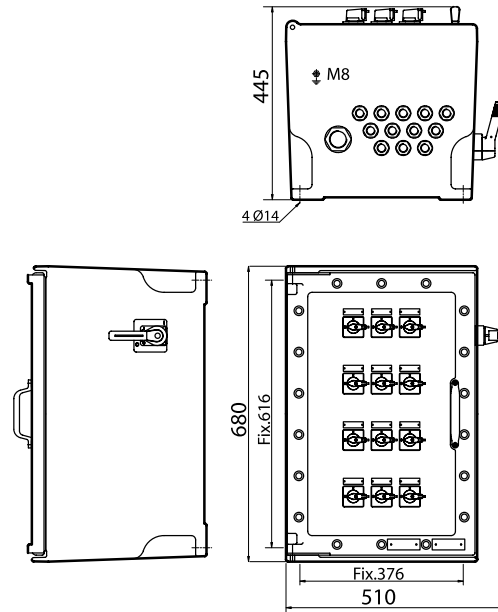
### Dimensions (mm):

#### Branch Circuit Breaker Versions:

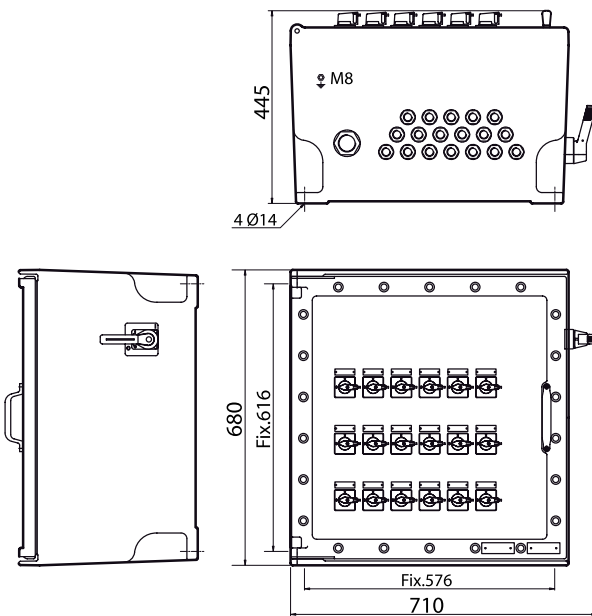
Layout Panel A:



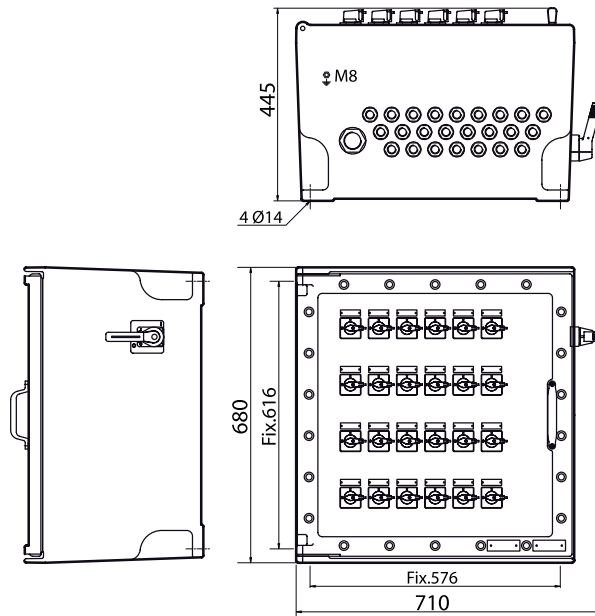
Layout Panel B:



Layout Panel C:



Layout Panel D:



# Panelboards & Motor Starters

## DPD Series: Distribution Panelboard – Flameproof

Zone 1 & 2 – 21 & 22

Ex II 2 GD

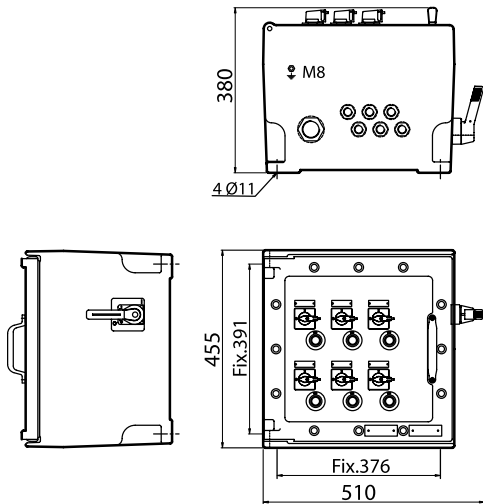
ATEX / IECEx

IP66 / IK10

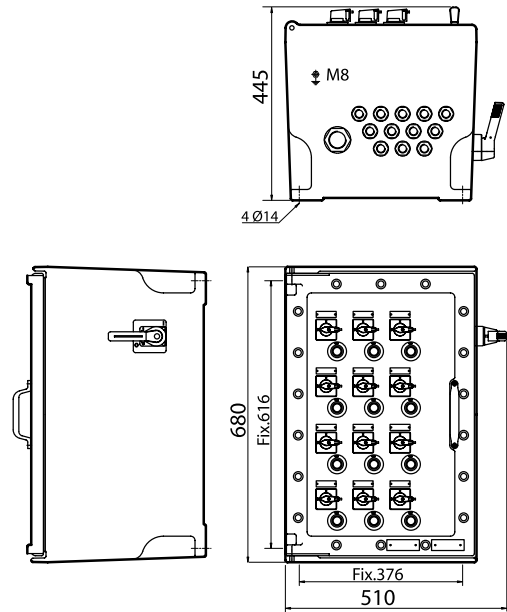
Dimensions (mm) – Continued:

GFI Branch Circuit Breaker Versions:

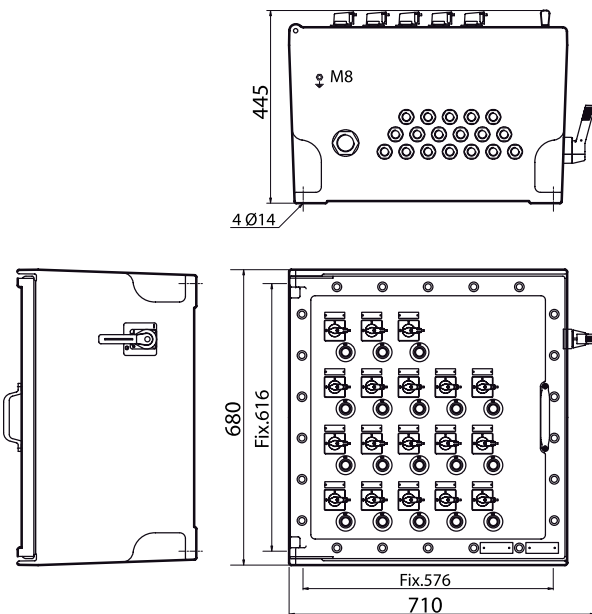
Layout Panel E:



Layout Panel F:



Layout Panel G:



Layout Panel H:

