

# Plugs & Sockets

PRE Series: 16 A Plugs and Sockets – Increased Safety

ELV: Extra Low Voltage



Plug



Wall Mounting Socket



Mobile Socket



Flush Socket

20/25 Vac
  20/50 Vdc
  40/50 Vac

LV: Low Voltage



Plug



Wall Mounting Sockets



Mobile Socket



Flush Socket

100/130 Vac
  200/250 Vac
  380/415 Vac  
 480/500 Vac
  50/500 Vac (300 to 500 Hz)

## Compliance Data:

ATEX - IECEx:



Zone 1 & 2 – 21 & 22	ATEX	II 2 GD	IECEx	CE
Ex de IIC	T6 or T5	Ex tD A21	T68°C	IP66 – IK09/10

Amperage:

16 A				
------	--	--	--	--

Operating Temperature:

-40°C to +55°C				
----------------	--	--	--	--

# Plugs & Sockets

## PRE Series: 16 A Plugs and Sockets – Increased Safety

Zone 1 & 2 - 21 & 22

II 2 GD

ATEX / IECEx

IP66 - IK09/10

### Applications:

- Plugs and sockets are used with portable or stationery electrical equipment such as lighting systems, conveyors, heaters, motor generators, air conditioning equipment, compressors and pumps.
- For use in corrosive atmospheres and installations in Zone 1 and 2 and 21 and 22 of the oil and gas industry; such as refineries, chemical and petrochemical plants, pipelines, loading docks and onshore and offshore drilling platforms.

### Features:

- Plug and socket assembly is equipped with a patented silver-plated linear switch which allows a total disconnection of power when plug is removed:
  - The high voltage contact separation is in a flameproof chamber.
  - The automatic electrical disconnection of each phase is contained in a second flameproof chamber.
- Short circuit protection is 20 kA, while normal reference is 10 kA.
- Different voltages are color coded for easy identification.
- The sockets are keyed to accept only ATX plugs (other plugs can not be inserted).
- ATX plugs can be used in non-hazardous sockets.

### Wall Mounting Sockets:

- Three M20 threaded entries (one on the top and two on the bottom).
- Supplied with one M20 cable gland (Ø 6.5 to Ø 14.5 mm) and two M20 blanking plugs.
- Terminal capacity 2 x 4 mm<sup>2</sup>. Can be through-wired.
- Fitted with three linked earth terminals.

### Plugs:

- One PG16 integrated cable gland (Ø 6.5 to Ø 14.5 mm).
- Terminal capacity 2.5 mm<sup>2</sup>.

### Mobile Sockets:

- One PG16 integrated cable gland (Ø 6.5 to Ø 14.5 mm).
- Terminal capacity 2 x 4 mm<sup>2</sup>.

### Flush Sockets:

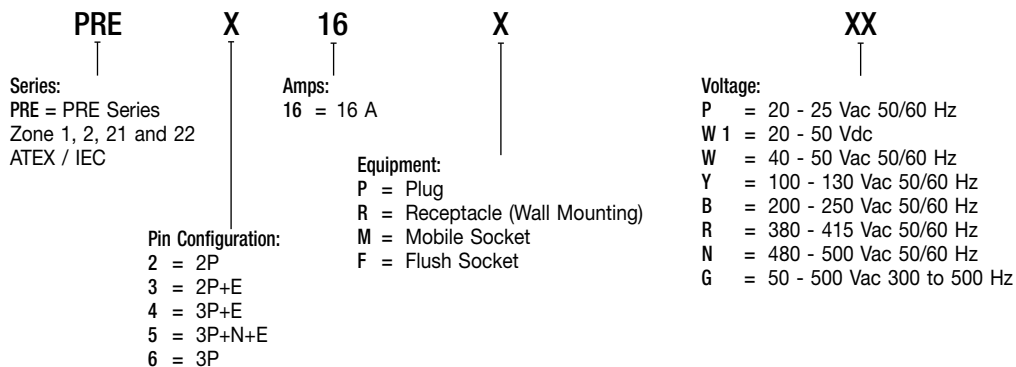
- Terminal capacity 2 x 4 mm<sup>2</sup>.

### Standard Material of Fixtures:

- High impact resistance polycarbonate.
- High impact resistance fiberglass reinforced polyester.
- Polyamide.

2P - 2P+E - 3P	
Wall Socket	Polycarbonate
Plug	Polyamide
Mobile Socket	Polyamide
Flush Socket	Polyamide
3P+E - 3P+N+E	
Wall Socket	Polyester
Plug	Polyamide
Mobile Socket	Polyamide
Flush Socket	Polyamide

### Catalog Number Logic:



# Plugs & Sockets

## PRE Series: 16 A Plugs and Sockets – Increased Safety

Zone 1 & 2 - 21 & 22

II 2 GD

ATEX / IECEx

IP66 - IK09/10

### Ordering Information:

Extra Low Voltage: ELV  
16 A – 20/25 Vac 50/60 Hz



Equipment	Pin Configuration	Weight (kg)	Volume (dm <sup>3</sup> )	Catalog Number	Old Catalog Number	Pack
Wall Socket		0.6	3.8	PRE216RP	097379	1
Plug		0.2	0.6	PRE216PP	097360	1
Mobile Socket		0.4	1.3	PRE216MP	097365	1
Flush Socket		2P	0.2	1.3	PRE216FP	097355
Wall Socket		0.6	3.8	PRE316RP	097368	1
Plug		0.2	0.6	PRE316PP	097388	1
Mobile Socket		0.4	1.3	PRE316MP	097389	1
Flush Socket		2P+E	0.2	1.3	PRE316FP	097387
Wall Socket		0.6	3.8	PRE616RP	097366	1
Plug		0.2	0.6	PRE616PP	097361	1
Mobile Socket		0.4	1.3	PRE616MP	097382	1
Flush Socket		3P	0.2	1.3	PRE616FP	097385

### 16 A – 20/50 Vdc



Equipment	Pin Configuration	Weight (kg)	Volume (dm <sup>3</sup> )	Catalog Number	Old Catalog Number	Pack
Wall Socket		0.6	3.8	PRE216RW1	097354	1
Plug		0.2	0.6	PRE216PW1	097364	1
Mobile Socket		0.4	1.3	PRE216MW1	097369	1
Flush Socket		2P	0.2	1.3	PRE216FW1	097386

### 16 A – 40/50 Vac 50/60 Hz



Equipment	Pin Configuration	Weight (kg)	Volume (dm <sup>3</sup> )	Catalog Number	Old Catalog Number	Pack
Wall Socket		0.6	3.8	PRE216RW	097352	1
Plug		0.2	0.6	PRE216PW	097362	1
Mobile Socket		0.4	1.3	PRE216MW	097367	1
Flush Socket		2P	0.2	1.3	PRE216FW	097383
Wall Socket		0.6	3.8	PRE616RW	097353	1
Plug		0.2	0.6	PRE616PW	097363	1
Mobile Socket		0.4	1.3	PRE616MW	097370	1
Flush Socket		3P	0.2	1.3	PRE616FW	097384

### Low Voltage: LV

16 A – 100/130 Vac 50/60 Hz



Equipment	Pin Configuration	Weight (kg)	Volume (dm <sup>3</sup> )	Catalog Number	Old Catalog Number	Pack
Wall Socket		0.6	3.8	PRE316RY	097419	1
Plug		0.2	0.6	PRE316PY	097430	1
Mobile Socket		0.4	1.3	PRE316MY	097400	1
Flush Socket		2P+E	0.2	1.3	PRE316FY	097410

# Plugs & Sockets

## PRE Series: 16 A Plugs and Sockets – Increased Safety

Zone 1 & 2 - 21 & 22

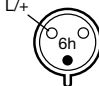
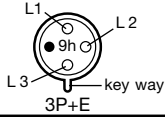
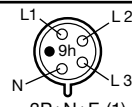
II 2 GD

ATEX / IECEx

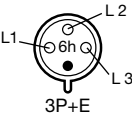
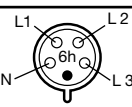
IP66 - IK09/10

### Ordering Information – Continued:


Low Voltage: LV  
16 A – 200/250 Vac 50/60 Hz

Equipment	Pin Configuration	Weight (kg)	Volume (dm <sup>3</sup> )	Catalog Number	Old Catalog Number	Pack
Wall Socket		0.6	3.8	PRE316RB	097426	1
Plug		0.2	0.6	PRE316PB	097433	1
Mobile Socket		0.4	1.3	PRE316MB	097401	1
Flush Socket		0.2	1.3	PRE316FB	097413	1
Wall Socket		1.5	4.7	PRE416RB	097424	1
Plug		0.2	0.6	PRE416PB	097434	1
Mobile Socket		0.6	4.0	PRE416MB	097403	1
Flush Socket		0.2	1.3	PRE416FB	097414	1
Wall Socket		1.6	4.7	PRE516RB	097425	1
Plug		0.3	1.3	PRE516PB	097435	1
Mobile Socket		0.6	4.0	PRE516MB	097407	1
Flush Socket		0.2	1.3	PRE516FB	097415	1

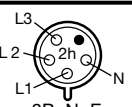
### 16 A – 380/415 Vac 50/60 Hz

Equipment	Pin Configuration	Weight (kg)	Volume (dm <sup>3</sup> )	Catalog Number	Old Catalog Number	Pack
Wall Socket		1.5	4.7	PRE416RR	097427	1
Plug		0.2	0.6	PRE416PR	097437	1
Mobile Socket		0.6	4.0	PRE416MR	097404	1
Flush Socket		0.3	1.3	PRE416FR	097417	1
Wall Socket		1.6	4.7	PRE516RR	097428	1
Plug		0.3	1.3	PRE516PR	097438	1
Mobile Socket		0.6	4.0	PRE516MR	097408	1
Flush Socket		0.3	1.3	PRE516FR	097418	1

### 16 A – 480/500 Vac 50/60 Hz

Equipment	Pin Configuration	Weight (kg)	Volume (dm <sup>3</sup> )	Catalog Number	Old Catalog Number	Pack
Wall Socket		1.5	4.7	PRE416RN	097441	1
Plug		0.2	0.6	PRE416PN	097451	1
Mobile Socket		0.6	4.0	PRE416MN	097409	1
Flush Socket		0.3	1.3	PRE416FN	097421	1

### 16 A – 50/500 Vac 300/500 Hz

Equipment	Pin Configuration	Weight (kg)	Volume (dm <sup>3</sup> )	Catalog Number	Old Catalog Number	Pack
Wall Socket		1.6	4.7	PRE516RG	097429	1
Plug		0.2	0.6	PRE516PG	097439	1
Mobile Socket		0.6	4.0	PRE516MG	097411	1
Flush Socket		0.3	1.3	PRE516FG	097423	1

(1) 120/208 V - 144/250 Vac 50/60 Hz

(2) 200/346 V - 240/415 Vac 50/60 Hz

# Plugs & Sockets

## PRE Series: 16 A Plugs and Sockets – Increased Safety



Zone 1 & 2 - 21 & 22

⊕ II 2 GD

ATEX / IECEx

IP66 - IK09/10

### Accessories:

	Catalog Number	Old Catalog Number	Pack
 M5 earth stud via M20 blanking plug	PREESTM20	095748	1
 Earth continuity adaptor via M20 blanking plug	PREECAM20	095743	1

### Technical Data:

Breaking Capacity		Wall Sockets	Plugs	Mobile Sockets	Flush Sockets
AC 3	4 kW – 220 V 4.3 kW – 240 V 7.5 kW – 380 V 8.2 kW – 415 V	Termination 2 x 4 mm <sup>2</sup>	2.5 mm <sup>2</sup>	2 x 4 mm <sup>2</sup>	2 x 4 mm <sup>2</sup>
ICC	20 kA	Cable Entries 3 x M20 with 1 x cable gland (dia. 6.5 to 14.5 mm) and 2 blanking plugs	1 x PG16 integrated cable gland (dia. 6.5 to 14.5 mm)	1 x PG16 integrated cable gland (dia. 6.5 to 14.5 mm)	N.A.

### Compliances:

Hazardous Area	Gas		Dust	
	PCX	PCX/EN	PCX	PCX/EN
Equipment	Wall and Mobile Sockets and Plug	Flush Socket	Wall and Mobile Sockets and Plug	Flush Socket
Zones	1 – 2		21 – 22	
Conforming to ATEX 94/9/CE	CE 0081 ⊕ II 2 G		CE 0081 ⊕ II 2 D	
Symbol of Protection ATEX	Ex de IIC		Ex tD A21	
Symbol of Protection IEC				
T Rating	T6 for Ta ≤ +40°C T5 for Ta ≤ +55°C		N.A.	
Surface Temperature	N.A.		T68°C	
Ambient Temperature	-40°C ≤ Ta ≤ +55°C			
CE Declaration of Conformity	50228	5C214	50228	5C214
ATEX Certificate	LCIE 02 ATEX 6068	LCIE 02 ATEX 0001U	LCIE 02 ATEX 6068	LCIE 02 ATEX 0001U
IECEx Certificate	IECEx LCI 04.0014	IECEx LCI 04.0012	IECEx LCI 04.0014	IECEx LCI 04.0012
Other Certifications	GOST	GOST	GOST	GOST
Ingress Protection (solid and liquid)	IP66			
Impact Resistance (shock)	IK10 (Polyester) and IK09 (Polyamide)			

### Standards:

Ex Standards	EN / IEC 60079-0; 60079-1; 60079-7; 61241-0; 61241-1
Product Standards	EN / IEC 60309-1; 60309-2
EMC Standards	–
Other Standards	EN / IEC 60529 (IP); 62262 (IK)

# Plugs & Sockets

## PRE Series: 16 A Plugs and Sockets – Increased Safety

Zone 1 & 2 - 21 & 22

Ex II 2 GD

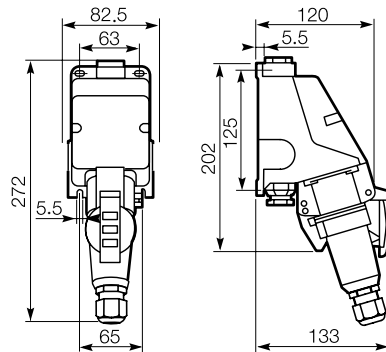
ATEX / IECEx

IP66 - IK09/10

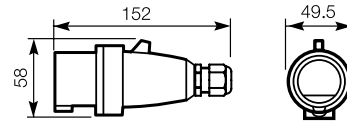
Dimensions (mm):

### 16A – 2P – 2P+E – 3P Versions

#### Wall Mounting Sockets

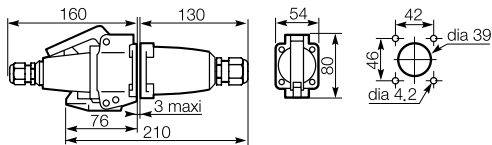


#### Plugs

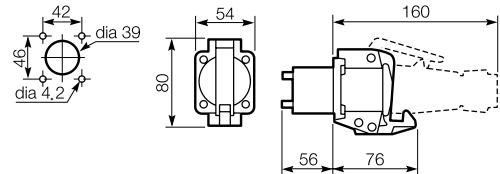


#### Mobile Sockets

Can be mounted on panel - 3 mm thickness maximum

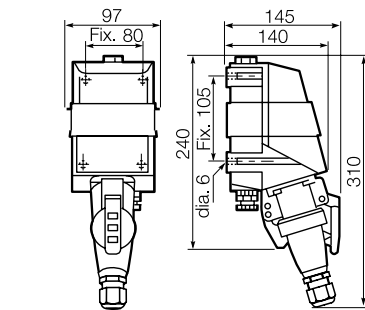


#### Flush Sockets

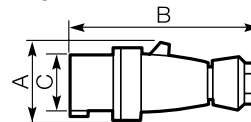


### 16A – 3P+E – 3P+N+E Versions

#### Wall Mounting Sockets



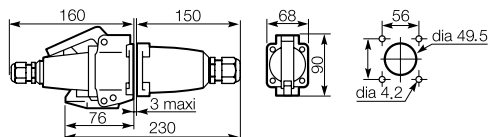
#### Plugs



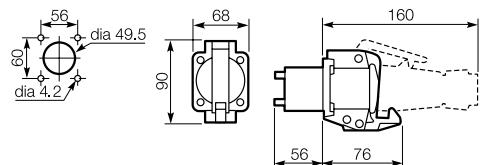
	A	B	C
3 P + E	66	154	55.5
3 P + N + E	73	166	62

#### Mobile Sockets

Can be mounted on panel - 3 mm thickness maximum



#### Flush Sockets



# Plugs & Sockets

PRE Series: 32 A Plugs and Sockets – Increased Safety

LV: Low Voltage



Plug



Wall Mounting Socket



Mobile Socket



Flush Socket

100/130 Vac
  200/250 Vac
  380/415 Vac
   
 480/500 Vac

## Compliance Data:

ATEX - IECEx



Zone 1 & 2 – 21 & 22	ATEX	II 2 GD	IECEx	CE
Ex de IIC	T6 or T5	Ex tD A21	T68°C	IP66 – IK10

Amperage:

32 A				
------	--	--	--	--

Operating Temperature:

-40°C to +55°C				
----------------	--	--	--	--

# Plugs & Sockets

## PRE Series: 32 A Plugs and Sockets – Increased Safety

Zone 1 & 2 - 21 & 22

II 2 GD

ATEX / IECEx

IP66 - IK10

### Applications:

- Plugs and sockets are used with portable or stationery electrical equipment such as lighting systems, conveyors, heaters, motor generators, air conditioning equipment, compressors and pumps.
- For use in corrosive atmospheres and installations in Zone 1 and 2 and 21 and 22 of the oil and gas industry, such as refineries, chemical and petrochemical plants, pipelines, loading docks, and onshore and offshore drilling platforms.

### Features:

- Plug and socket assembly is equipped with a patented silver-plated linear switch which allows a total disconnection of power when plug is removed:
  - The high voltage contact separation is in a flameproof chamber.
  - The automatic electrical disconnection of each phase is contained in a second flameproof chamber.
- Short circuit protection is 20 kA, while normal reference is 10 kA.
- Different voltages are color coded for easy identification.
- The sockets are keyed to accept only ATX plugs (other plugs can not be inserted).
- ATX plugs can be used in non-hazardous sockets.

### Wall Mounting Sockets:

- Three M25 threaded entries (one on the top and two on the bottom).
- Supplied with one M25 cable gland (Ø 8 to Ø 18.5 mm) and two M25 blanking plugs.
- Terminal capacity 2 x 6 mm<sup>2</sup>.
- Fitted with three linked earth terminals.

### Plugs:

- One PG21 integrated cable gland (Ø 8 to Ø 18.5 mm) for 3P+N+E versions.
- Terminal capacity 6 mm<sup>2</sup>.

#### Mobile Sockets:

- One PG21 integrated cable gland (Ø 8 to Ø 18.5 mm) for 2P+E and 3P+E versions.
- One PG29 integrated cable gland (Ø 18 to Ø 25 mm) for 3P+N+E versions.
- Terminal capacity 2 x 6 mm<sup>2</sup>.

### Flush Sockets:

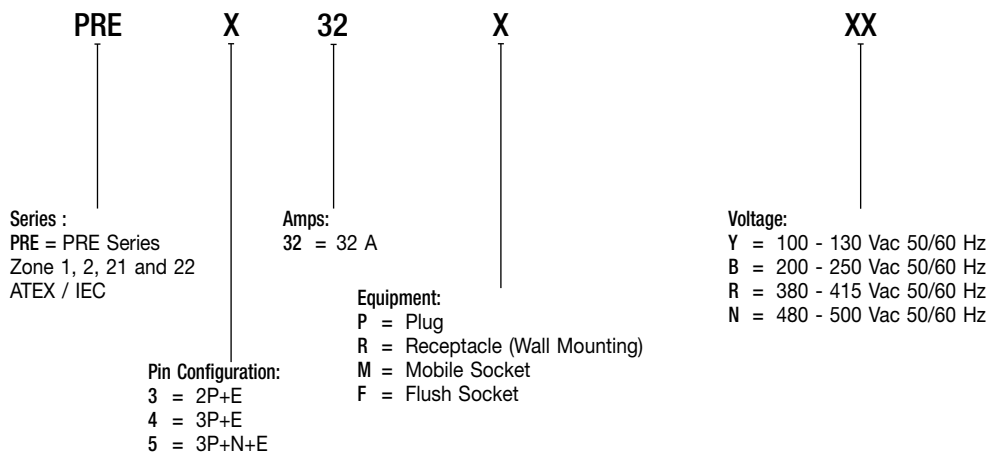
- Terminal capacity 2 x 6 mm<sup>2</sup>.

### Standard Material of Fixtures:

- High impact resistance fiberglass reinforced polyester.
- Polyamide.

Wall Socket	Polyester
Plug	Polyamide
Mobile Socket	Polyamide
Flush Socket	Polyamide

### Catalog Number Logic:





# Plugs & Sockets

## PRE Series: 32 A Plugs and Sockets – Increased Safety

Zone 1 & 2 - 21 & 22

II 2 GD

ATEX / IECEx

IP66 - IK10

### Ordering Information:

Low Voltage: LV

32 A – 100/130 Vac 50/60 Hz



Equipment	Pin Configuration	Weight (kg)	Volume (dm <sup>3</sup> )	Catalog Number	Pack
Wall Socket		1.9	7	PRE332RY	1
Plug		0.5	4	PRE332PY	1
Mobile Socket		0.8	3.2	PRE332MY	1
Flush Socket	2P+E	0.6	2.7	PRE332FY	1

32 A – 200/250 Vac 50/60 Hz



Equipment	Pin Configuration	Weight (kg)	Volume (dm <sup>3</sup> )	Catalog Number	Old Catalog Number	Pack
Wall Socket		1.9	7	PRE332RB	097723	1
Plug		0.5	4	PRE332PB	097733	1
Mobile Socket		0.8	3.2	PRE332MB	097743	1
Flush Socket	2P+E	0.6	2.7	PRE332FB	097713	1

Wall Socket		1.9	7	PRE432RB	097724	1
Plug		0.5	4	PRE432PB	097734	1
Mobile Socket		0.8	3.2	PRE432MB	097744	1
Flush Socket	3P+E key way	0.6	2.7	PRE432FB	097714	1

Wall Socket		1.9	7	PRE532RB	097725	1
Plug		0.5	4	PRE532PB	097735	1
Mobile Socket		1	4	PRE532MB	097745	1
Flush Socket	3P+N+E (1)	0.6	2.7	PRE532FB	097715	1

32 A – 380/415 Vac 50/60 Hz



Equipment	Pin Configuration	Weight (kg)	Volume (dm <sup>3</sup> )	Catalog Number	Old Catalog Number	Pack
Wall Socket		2	7	PRE432RR	097727	1
Plug		0.4	4	PRE432PR	097737	1
Mobile Socket		0.8	3.2	PRE432MR	097747	1
Flush Socket	3P+E	0.6	2.7	PRE432FR	097777	1

Wall Socket		2	7	PRE532RR	097728	1
Plug		0.5	4	PRE532PR	097738	1
Mobile Socket		1	4	PRE532MR	097749	1
Flush Socket	3P+N+E (2)	0.6	2.7	PRE532FR	097778	1

32 A – 480/500 Vac 50/60 Hz



Equipment	Pin Configuration	Weight (kg)	Volume (dm <sup>3</sup> )	Catalog Number	Old Catalog Number	Pack
Wall Socket		2	7	PRE432RN	097757	1
Plug		0.4	4	PRE432PN	097751	1
Mobile Socket		1	4	PRE432MN	097761	1
Flush Socket	3P+E	0.6	2.7	PRE432FN	097754	1

(1) 120/208 V - 144/250 Vac 50/60 Hz

(2) 200/346 V - 240/415 Vac 50/60 Hz

# Plugs & Sockets

## PRE Series: 32 A Plugs and Sockets – Increased Safety



Zone 1 & 2 - 21 & 22

⊕ II 2 GD

ATEX / IECEx

IP66 - IK10

### Accessories:

	Catalog Number	Old Catalog Number	Pack
 M6 earth stud via M25 blanking plug	PREESTM25	095749	1
 Earth continuity adaptor via M25 blanking plug	PREECAM25	095744	1

### Technical Data:

Breaking Capacity	
AC 1	32 A – 500 V
AC 22	11 kW – 220 V
	12 kW – 240 V
	19 kW – 380 V
	20.7 kW – 415 V
ICC	20 kA

	Wall Sockets	Plugs	Mobile Sockets	Flush Sockets
Termination	2 x 6 mm <sup>2</sup>	6 mm <sup>2</sup>	2 x 6 mm <sup>2</sup>	2 x 6 mm <sup>2</sup>
Cable Entries	3 x M25 with 1 x cable gland (dia. 8 to 18.5 mm) and 2 blanking plugs	2P+E and 3P+E 1 x PG21 integrated cable gland (dia. 8 to 18.5 mm)  3P+N+E 1 x PG29 integrated cable gland (dia. 18 to 25 mm)	2P+E and 3P+E 1 x PG21 integrated cable gland (dia. 8 to 18.5 mm)  3P+N+E 1 x PG29 integrated cable gland (dia. 18 to 25 mm)	N.A.

### Compliances:

Hazardous Area	Gas		Dust	
	PCX	PCX/EN	PCX	PCX/EN
Equipment	Wall and Mobile Sockets and Plug	Flush Socket	Wall and Mobile Sockets and Plug	Flush Socket
Zones	1 – 2		21 – 22	
Conforming to ATEX 94/9/CE	CE 0081 ⊕ II 2 G		CE 0081 ⊕ II 2 D	
Symbol of Protection ATEX	Ex de IIC		Ex tD A21	
Symbol of Protection IEC				
T Rating	T6 for Ta ≤ +40°C T5 for Ta ≤ +55°C		N.A.	
Surface Temperature	N.A.		T68°C	
Ambient Temperature	-40°C ≤ Ta ≤ +55°C			
CE Declaration of Conformity	50228	5C214	50228	5C214
ATEX Certificate	LCIE 02 ATEX 6068	LCIE 02 ATEX 0001U	LCIE 02 ATEX 6068	LCIE 02 ATEX 0001U
IECEx Certificate	IECEx LCI 04.0014	IECEx LCI 04.0012	IECEx LCI 04.0014	IECEx LCI 04.0012
Other Certifications	GOST	GOST	GOST	GOST
Ingress Protection (solid and liquid)	IP66			
Impact Resistance (shock)	IK10			

### Standards:

Ex Standards	EN / IEC 60079-0; 60079-1; 60079-7; 61241-0; 61241-1
Product Standards	EN / IEC 60309-1; 60309-2
EMC Standards	–
Other Standards	EN / IEC 60529 (IP); 62262 (IK)

# Plugs & Sockets

## PRE Series: 32 A Plugs and Sockets – Increased Safety

Zone 1 & 2 - 21 & 22

II 2 GD

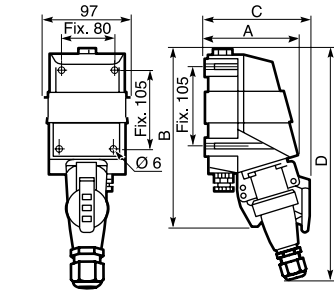
ATEX / IECEx

IP66 – IK10

### Dimensions (mm):

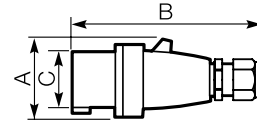
#### 32A – 2P+E – 3P+E – 3P+N+E Versions

##### Wall Mounting Sockets



	A	B	C	D
<b>2 P + E</b>	140	275	155	370
<b>3 P + E</b>	140	275	155	370
<b>3 P + N + E</b>	140	275	165	375

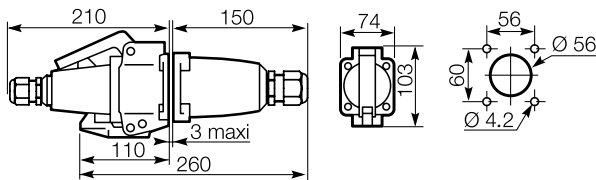
##### Plugs



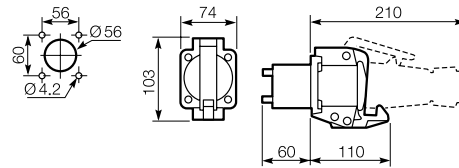
	A	B	C
<b>2 P + T</b>	80	170	67
<b>3 P + T</b>	80	170	67
<b>3 P + N + T</b>	80	195	74

#### Mobile Sockets

Can be mounted on panel - 3 mm thickness maximum



#### Flush Sockets



# Plugs & Sockets

PRE Series: 63 A Plugs and Sockets – Increased Safety



63 A Wall Mounting Socket



63A Wall Mounting Socket Through-Wired



63A Plug

### Compliances:

ATEX - IEC:



Zone 1 & 2 – 21 & 22	ATEX	II 2 GD	IEC	CE
Ex de IIC	T6 or T5	Ex tD A21	T90°C	IP66 – IK10

### Electrical Data:

Voltage	Amperage			
Up to 690 V	63 A			

### Operating Temperature:

-30°C to +55°C		
----------------	--	--

# Plugs & Sockets

## PRE Series: 63 A Plugs and Sockets – Increased Safety

Zone 1 & 2 - 21 & 22

II 2 GD

ATEX / IEC

IP66 – IK10

### Applications:

- Plugs and sockets are used with stationary or portable electrically operated devices such as welding devices, lighting systems, conveyers, heaters, motor generator sets, air conditioners, compressors and pumps.
- For use in corrosive atmospheres and installations in Zones 1, and 2 and 21 and 22 of oil and gas industry; such as refineries, chemical, petrochemical plants, pipelines, offshore and onshore drilling platforms.

### Features:

- Positive polarization: only ATX plugs of same style, number of poles and ampere rating may be used with these sockets.
- Interlocked 3-pole or 4-pole Ex de disconnecting on-load switch, with auxiliary early break contact (capacity 2.5 mm<sup>2</sup> max).
- Plug is mechanically locked in socket when switch is ON.
- Switch operating handle can be padlocked in OFF position (max 4 padlocks).
- Plug cannot be inserted or removed unless switch is in OFF position.

### Socket Outlet:

Standard versions:

- Supplied with one M50 cable gland for unarmored cable Ø 28 to Ø 42 mm, and one M25 blanking plug.
- Terminal capacity 1 x 35 mm<sup>2</sup>.

Through-wired versions:

- Supplied with two M50 cable glands for unarmored cable Ø 28 to Ø 42 mm, and one M25 blanking plug.
- Terminal capacity 2 x 35 mm<sup>2</sup>.

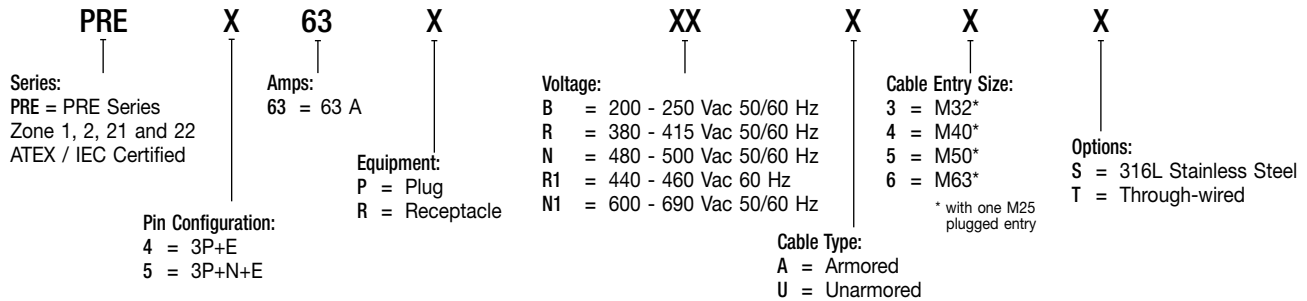
### Plug:

- One integrated cable entry for unarmored flexible cable Ø 17.5 to 29 mm for 3P + E versions. Ø 17.5 to 32 mm for 3P + N + E versions.
- Terminals capacity 16 mm<sup>2</sup>.

### Standard Material of Fixtures:

- High impact resistance fiberglass reinforced polyester socket.
- Polyamide flap cover and plug.

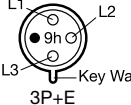
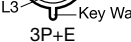
### Catalog Number Logic:



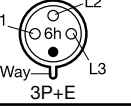
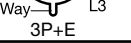
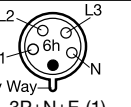

### Ordering Information:

Standard Versions:

63 A – 200/250 Vac 50/60 Hz

Equipment	Pin Configuration	Weight (kg)	Volume (dm <sup>3</sup> )	Catalog Number	Old Catalog Number	Pack
Wall Socket		8	26	PRE463RBU5	096842	1
Plug		1	7	PRE463PB	096882	1

63 A – 380/415 Vac 50/60 Hz

Equipment	Pin Configuration	Weight (kg)	Volume (dm <sup>3</sup> )	Catalog Number	Old Catalog Number	Pack
Wall Socket		8	26	PRE463RRU5	096844	1
Plug		1	7	PRE463PR	096884	1
Wall Socket		8	26	PRE563RRU5	096845	1
Plug		1	7	PRE563PR	096885	1

(1) 200/346 V – 240/415 Vac 50/60 Hz

# Plugs & Sockets

## PRE Series: 63 A Plugs and Sockets – Increased Safety

Zone 1 & 2 - 21 & 22


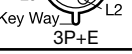

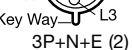
II 2 GD

ATEX / IEC

IP66 – IK10

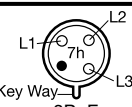
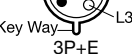
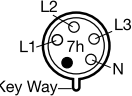

### Ordering Information – Continued:

63 A – 440/460 Vac 60 Hz

Equipment	Pin Configuration	Weight (kg)	Volume (dm <sup>3</sup> )	Catalog Number	Old Catalog Number	Pack
Wall Socket		8	26	PRE463RR1U5	096848	1
Plug		1	7	PRE463PR1	096888	1
Wall Socket		8	26	PRE563RR1U5	096849	1
Plug		1	7	PRE563PR1	096889	1


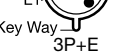
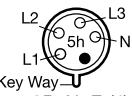
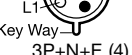
(2) 250/440 V – 265/460 Vac 60 Hz

63 A – 480/500 Vac 50/60 Hz

Equipment	Pin Configuration	Weight (kg)	Volume (dm <sup>3</sup> )	Catalog Number	Old Catalog Number	Pack
Wall Socket		8	26	PRE463RNU5	096846	1
Plug		1	7	PRE463PN	096886	1
Wall Socket		8	26	PRE563RNU5	096847	1
Plug		1	7	PRE563PN	096887	1

(3) 277/480 V – 288/500 Vac 50/60 Hz

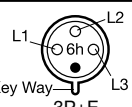
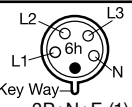
63 A – 600/690 Vac 50/60 Hz

Equipment	Pin Configuration	Weight (kg)	Volume (dm <sup>3</sup> )	Catalog Number	Old Catalog Number	Pack
Wall Socket		8	26	PRE463RN1U5	096851	1
Plug		1	7	PRE463PN1	096891	1
Wall Socket		8	26	PRE563RN1U5	096852	1
Plug		1	7	PRE563PN1	096892	1

(4) 347/600 V – 400/690 Vac 50/60 Hz

### Through-wired Versions:

63 A – 380/415 Vac 50/60 Hz

Equipment	Pin Configuration	Weight (kg)	Volume (dm <sup>3</sup> )	Catalog Number	Old Catalog Number	Pack
Wall Socket		16	110	PRE463RRU5T	—	1
Wall Socket		16	110	PRE563RRU5T	—	1

(1) 200/346 V – 240/415 Vac 50/60 Hz

# Plugs & Sockets

## PRE Series: 63 A Plugs and Sockets – Increased Safety

Zone 1 & 2 – 21 & 22

⊕ II 2 GD

ATEX / IEC IP66 – IK10

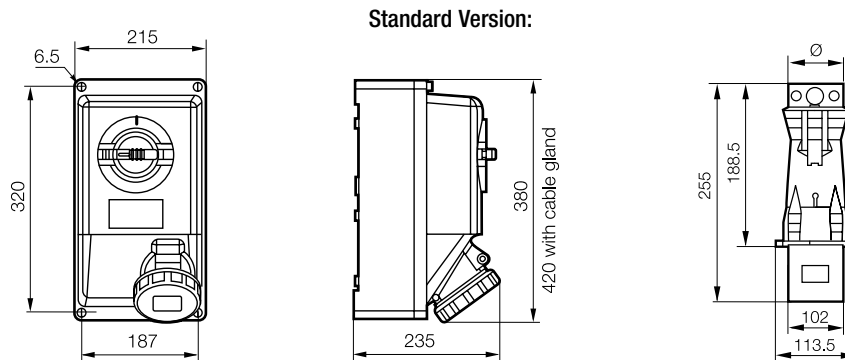
### Compliances:

Hazardous Area	Gas	Dust
Certification Type	PC63X	
Zones	1–2	21–22
Conforming to ATEX 94/9/CE	CE 0081 ⊕ II 2 G	CE 0081 ⊕ II 2 D
Symbol of Protection ATEX	Ex de IIC	Ex tD A21
Symbol of Protection IEC		
T Rating	T6 for $T_a \leq +40^\circ\text{C}$ T5 for $+40^\circ\text{C} < T_a \leq +55^\circ\text{C}$	–
Surface Temperature	–	T90°C
Service Temperature	-30°C to +55°C	
CE Declaration of Conformity	50208	
ATEX Certificate	LCIE 99 ATEX 6004	
IEC Certificate	LCIE Ex 99.004	
Other Certifications	GOST	
Ingress Protection (solid and liquid)	IP66	
Impact Resistance (shock)	IK10	

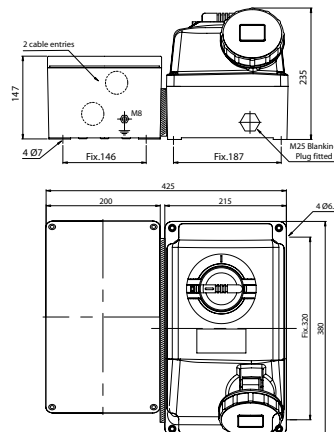
### Standards:

<b>Ex Standards</b>	EN / IEC 60079-0; 60079-1; 60079-7; 61241-0; 61241-1
<b>Product Standards</b>	EN / IEC 60309-1; 60309-2
<b>EMC Standards</b>	–
<b>Other Standards</b>	EN / IEC 60529 (IP); EN 62262 (IK)

### Dimensions (mm):



### Through-Wired Version:



# Plugs & Sockets

PRE Series: 125 A Plugs and Sockets – Increased Safety



125 A Plug



125 A Wall Mounting Socket

## Compliances:

ATEX - IEC:



Zone 1 & 2 – 21 & 22	ATEX	II 2 GD	IEC	CE
Ex de IIC	T6 or T5	Ex tD A21	T90°C	IP66 – IK10

## Electrical Data:

Voltage	Amperage			
Up to 690 V	125 A			

## Operating Temperature:

-30°C to +55°C		
----------------	--	--



# Plugs & Sockets

## PRE Series: 125 A Plugs and Sockets – Increased Safety

Zone 1 & 2 – 21 & 22

II 2 GD

ATEX / IEC

IP66 – IK10

### Applications:

- Plugs and sockets are used with stationary or portable electrically operated devices such as welding devices, lighting systems, conveyers, heaters, motor generator sets, air conditioners, compressors and pumps.
- For use in corrosive atmospheres and installations in Zones 1 and 2 and 21 and 22 of the oil and gas industry; such as refineries, chemical, petrochemical plants, pipelines, offshore and onshore drilling platforms.

### Features:

- Positive polarization: only ATX plugs of same style, number of poles and ampere rating may be used with these sockets.
- Interlocked 3-pole or 4-pole Ex de disconnecting on-load switch, with auxiliary early break contact (capacity 2.5 mm<sup>2</sup> max).
- Plug is mechanically locked in socket when switch is ON.
- Switch operating handle can be padlocked in OFF position (max 4 padlocks).
- Plug cannot be inserted or removed unless switch is in OFF position.

### Socket Outlet:

- One M63 cable gland for unarmored cable Ø 36 to Ø 44 mm, and one M25 blanking plug.
- Terminal capacity 120 mm<sup>2</sup>.

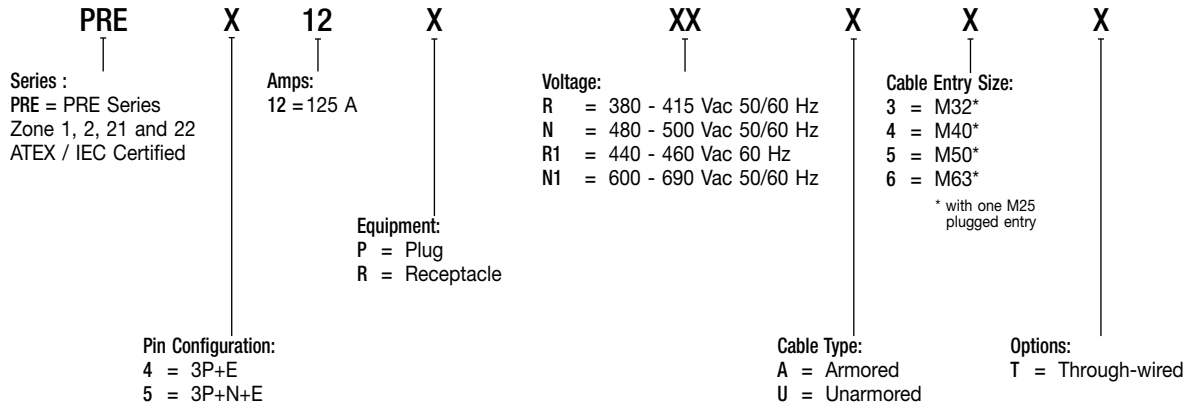
### Plug:

- One integrated cable entry for unarmored flexible cable Ø 30 to Ø 48 mm.
- Terminals capacity 50 mm<sup>2</sup>.

### Standard Material of Fixtures:

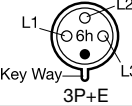
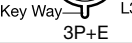

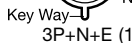
- 316L stainless steel socket.
- Polyamide flap cover and plug.

### Catalog Number Logic:



### Ordering Information:

125 A – 380/415 Vac 50/60Hz

Equipment	Pin Configuration	Weight (kg)	Volume (dm <sup>3</sup> )	Catalog Number	Old Catalog Number	Pack
Wall Socket		16	70	PRE412RRU6	096866	1
Plug		1.1	13	PRE412PR	096876	1
Wall Socket		16	70	PRE512RRU6	096867	1
Plug		1.1	13	PRE512PR	096877	1

(1) 200/346 V – 240/415 Vac 50/60 Hz

# Plugs & Sockets

## PRE Series: 125 A Plugs and Sockets – Increased Safety

Zone 1 & 2 – 21 & 22


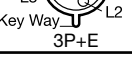
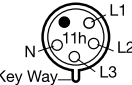
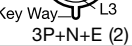
II 2 GD

ATEX / IEC

IP66 – IK10

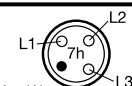
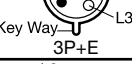
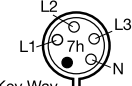
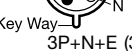
### Ordering Information – Continued:

125 A – 440/460 Vac 60 Hz

Equipment	Pin Configuration	Weight (kg)	Volume (dm <sup>3</sup> )	Catalog Number	Old Catalog Number	Pack
Wall Socket		16	70	PRE412RR1U6	096858	1
Plug		1.1	13	PRE412PR1	096868	1
Wall Socket		16	70	PRE512RR1U6	096859	1
Plug		1.1	13	PRE512PR1	096869	1

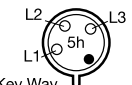
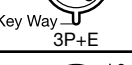
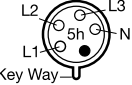
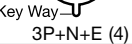
(2) 250/440 V – 265/460 Vac 60 Hz

125 A – 480/500 Vac 50/60 Hz

Equipment	Pin Configuration	Weight (kg)	Volume (dm <sup>3</sup> )	Catalog Number	Old Catalog Number	Pack
Wall Socket		16	70	PRE412RNU6	096860	1
Plug		1.1	13	PRE412PN	096870	1
Wall Socket		16	70	PRE512RNU6	096861	1
Plug		1.1	13	PRE512PN	096871	1

(3) 277/480 V – 288/500 Vac 50/60 Hz

125 A – 600/690 Vac 50/60 Hz

Equipment	Pin Configuration	Weight (kg)	Volume (dm <sup>3</sup> )	Catalog Number	Old Catalog Number	Pack
Wall Socket		16	70	PRE412RN1U6	096862	1
Plug		1.1	13	PRE412PN1	096872	1
Wall Socket		16	70	PRE512RN1U6	096863	1
Plug		1.1	13	PRE512PN1	096873	1

(4) 347/600 V – 400/690 Vac 50/60 Hz

# Plugs & Sockets

## PRE Series: 125 A Plugs and Sockets – Increased Safety

Zone 1 & 2 – 21 & 22

⊕ II 2 GD

ATEX / IEC

IP66 – IK10

### Compliances:

Hazardous Area	Gas	Dust
Certification Type	PC125X	
Zones	1–2	21–22
Conforming to ATEX 94/9/CE	CE 0081 ⊕ II 2 G	CE 0081 ⊕ II 2 D
Symbol of Protection ATEX	Ex de IIC	Ex tD A21
Symbol of Protection IEC		
T Rating	T6 for $T_a \leq +40^\circ\text{C}$ T5 for $T_a \leq +55^\circ\text{C}$	–
Surface Temperature	–	T90°C
Service Temperature	-30°C to +55°C	
CE Declaration of Conformity	50218	
ATEX Certificate	LCIE 99 ATEX 6031	
IEC Certificate	LCIE Ex 99.017	
Other Certifications	GOST	
Ingress Protection (solid and liquid)	IP66	
Impact Resistance (shock)	IK10	

### Standards:

<b>Ex Standards</b>	EN / IEC 60079-0; 60079-1; 60079-7; 61241-0; 61241-1
<b>Product Standards</b>	EN / IEC 60309-1; 60309-2
<b>EMC Standards</b>	–
<b>Other Standards</b>	EN / IEC 60529 (IP); EN 62262 (IK)

### Dimensions (mm):

#### Standard Version:

