

**Lighting: Signaling Products**  
**VCB Series: Video Camera Housing – Flameproof**



**VCB4**  
 (475 mm length version)

**Compliance Data:**

ATEX - IEC:



Zone 1 & 2 – 21 & 22	ATEX	II 2 GD	IEC	CE
Ex d IIC	T6 or T5	Ex tD A21	T100°C	IP66 – IK10

**Operating Temperature:**

**-40°C to +55°C**

# Lighting: Signaling Products

## VCB Series: Video Camera Housing – Flameproof

Zone 1 & 2 - 21 & 22

⊕ II 2 GD

ATEX / IEC

IP66 - IK10

LIGHTING

### Applications:

- Flameproof housing to encase video camera used for onshore and offshore site and process supervision.

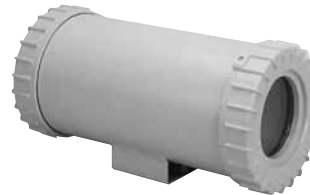
### Features:

Compatible with any camera model with the following specifications:

- Length compatible with one of the two sizes (475 or 735 mm).
- Maximum cross section for the camera : < 127 cm<sup>2</sup>.
- Capacitor's residual energy (after opening) : < 20 μJ.
- Maximum dissipated power: 14 W.
- Equipped with back plate.
- Two M20 threaded cable entries.


### Standard Material of Fixtures:

- Gray painted aluminum body.
- Sealed toughened glass window.



**VCB4**  
(475 mm length version)

### Ordering Information:

	Length (mm)	Weight (kg)	Volume (dm <sup>3</sup> )	Catalog Number	Old Catalog Number	Pack
	475	14.2	41	<b>VCB4</b>	095130	1
	735	18.7	61	<b>VCB7</b>	095131	1

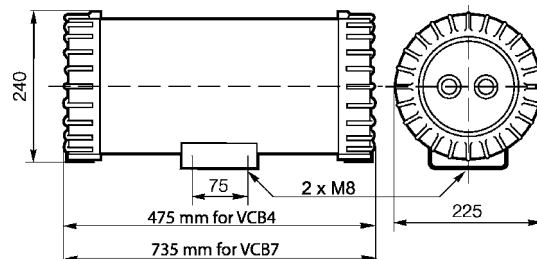
### Compliances:

Hazardous Area	Gas	Dust
<b>Certified Type</b>	<b>CAM</b>	
Zones	1 – 2	21 – 22
Conforming to ATEX 94/9/CE	CE 0081 ⊕ II 2 G	CE 0081 ⊕ II 2 D
Symbol of Protection ATEX	Ex d IIC	Ex tD A21
Symbol of Protection IEC		
T Rating	T6 for Ta ≤ 40°C T5 for Ta > 40°C	–
Surface Temperature	–	100°C
Ambient Temperature	-40°C to +55°C	
CE Declaration of Conformity	50255	
ATEX Certificate	LCIE 03 ATEX 6080	
IEC Certificate	LCIE Ex 03.014	
Other Certifications	–	
Index of Protection (solid & liquid)	IP66	
Impact Resistance (shock)	IK10	
Internal Volume (dm <sup>3</sup> )	> 2 dm <sup>3</sup> (2 liters)	

### Standards:

<b>EX Standards</b>	EN / IEC 60079-0; 60079-1; 61241-0; 61241-1
<b>Product Standards</b>	–
<b>EMC Standards</b>	–
<b>Other Standards</b>	EN / IEC 60529 (IP); 62262 (IK)

### Dimensions (mm):



**Lighting:** Signaling Products  
**VCB Series:** Video Camera Housing – Flameproof



DA2W2E102

**Compliance Data:**

ATEX - IEC:



Zone 1 & 2 – 21 & 22	ATEX	II 2 GD	IEC	CE
Ex d IIC	T6	Ex tD A21	T80°C	IP66 – IK09

**Operating Temperature:**

**-40°C to +55°C**

# Lighting: Signaling Products

## VCB Series: Video Camera Housing – Flameproof

Zone 1 & 2 - 21 & 22

⊕ II 2 GD

ATEX / IEC

IP66 - IK09

LIGHTING

### Applications:

- Flameproof housing to encase video camera used for onshore and offshore site and process supervision.

### Features:

- Maximum dissipated power: 10 W
- Equipped with a back plate.
- One open view glass window, usable  $\varnothing$  84 mm.
- Two internal grounding connection: M4 screw. External grounding: M6 screw.
- Two M20 threaded entries at the bottom.


### Standard Material of Fixtures:

- Gray painted aluminum body.
- Sealed toughened glass window.




DA2W2E102

### Ordering Information:

	Weight (kg)	Volume (dm <sup>3</sup> )	Catalog Number	Old Catalog Number	Pack
	3.5	13	DA2W2E102	093155	1

### Accessories:

	Catalog Number	Old Catalog Number	Pack
	VCBHBA	093198	1

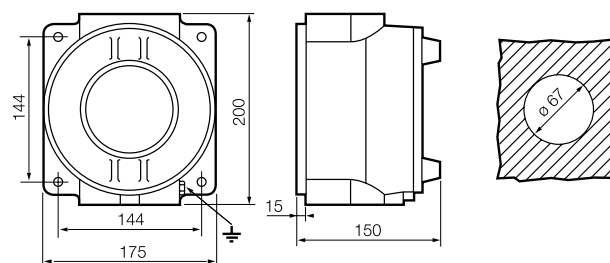
### Compliances:

Hazardous Area	Gas	Dust
Certified Type	BR2d	
Zones	1 – 2	21 – 22
Conforming to ATEX 94/9/CE	CE 0081⊕II 2 G	CE 0081⊕II 2 D
Symbol of Protection ATEX	Ex d IIC	Ex tD A21
Symbol of Protection IEC		
T Rating	T6	N.A.
Surface Temperature	N.A.	T80°C
Ambient Temperature	-40°C to +55°C	
CE Declaration of Conformity	50256	
ATEX Certificate	LCIE 03 ATEX 6062	
IEC Certificate	LCIE Ex 03.007	
Other Certifications	GOST	
Index of Protection (solid & liquid)	IP66	
Impact Resistance (shock)	IK09	
Internal Volume (dm <sup>3</sup> )	< 2 dm <sup>3</sup> (2 liters)	

### Standards:

EX Standards	EN / IEC 60079-0; 60079-1; 61241-0; 61241-1
Product Standards	–
EMC Standards	–
Other Standards	EN / IEC 60529 (IP); 62262 (IK)

### Dimensions (mm):



**Lighting: Signaling Products**  
**VCB Series: Video Camera Housing – Flameproof**



VCBA

**Compliance Data:**

ATEX - IEC:



Zone 1 & 2 – 21 & 22	ATEX	II 2 GD	IEC	CE
Ex d IIC	T6	Ex tD A21	T80°C	IP66 – IK10

**Operating Temperature:**

**-40°C to +55°C**

# Lighting: Signaling Products

## VCB Series: Video Camera Housing – Flameproof

Zone 1 & 2 - 21 & 22

⊕ II 2 GD

ATEX / IEC

IP66 - IK10

LIGHTING

### Applications:

- Flameproof adjustable housing to encase video camera for onshore and offshore site and process supervision.

### Standard Material of Fixtures:

- Gray painted aluminum body.
- Sealed toughened glass window.



VCBA

### Features:

- Maximum Power: 10 W.
- One open view glass window, usable diameter 155 mm.
- Threaded flameproof joint.
- Two M20 threaded entries with one blanking plug.

### Ordering Information:



Weight (kg)	Volume (dm <sup>3</sup> )	Catalog Number	Old Catalog Number	Pack
8	27	VCBA	095048	1

### Compliances:

Hazardous Area	Gas	Dust
Certified Type	PJ70	
Zones	1 – 2	21 – 22
Conforming to ATEX 94/9/CE	CE 0081⊕ II 2 G	CE 0081⊕ II 2 D
Symbol of Protection ATEX	Ex d IIC	Ex tD A21
Symbol of Protection IEC		
T Rating	T6	N.A.
Surface Temperature	N.A.	T80°C
Ambient Temperature	-40°C to +55°C	
CE Declaration of Conformity	50239	
ATEX Certificate	LCIE 02 ATEX 6227	
IEC Certificate	LCIE Ex 02.020	
Other Certifications	-	
Index of Protection (solid & liquid)	IP66	
Impact Resistance (shock)	IK10	
Internal Volume (dm <sup>3</sup> )	> 2 dm <sup>3</sup> (2 liters)	

### Standards:

EX Standards	EN / IEC 60079-0; 60079-1; 61241-0; 61241-1
Product Standards	-
EMC Standards	-
Other Standards	EN / IEC 60529 (IP); 62262 (IK)

### Dimensions (mm):

