

Unicode® 2 Series Accessories : Push Buttons

Components for Increased Safety Enclosures

Zone 1 and 2 – 21 and 22
Gas (G) and Dust (D)

Features

- Can be equipped with up to 3 Unicode 2 Contact Blocks (UCB) Series contact blocks.
- ATEX and IECEx certified.
- TS35 rail mounted.
- Panel mounted.

Standard Materials

- Body: polyamide
- Seal: ethylene propylene diene Monomer (M-class) rubber (EPDM)

Certifications and Compliances

◆ ATEX/ IECEx Certification

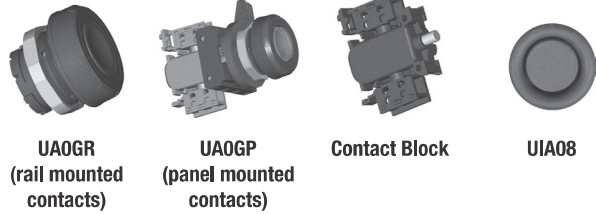
- Certification Type TCe
 - Gas: Zone 1 and 2
 - Conforming to ATEX 94/9/CE: Ⓔ II 2 G
 - Type of Protection: Ex e IIC Gb
 - Dust: Zone 21 and 22
 - Conforming to ATEX 94/9/CE: Ⓔ II 2 D
 - Type of Protection: Ex tb IIIC Db
 - Surface Temperature: -40 °C to +60 °C
 - CE Declaration of Conformity: 5C242
 - ATEX Certificate: LCIE 09 ATEX 3010U
 - IECEx Certificate: IECEx LCI 09.0011U
 - Index of Protection according EN/IEC 60529: IP66
 - Impact Resistance (shock): IK10

◆ EURASEC Certification

- EURASEC RU C-FR. ГБ 05.B00909

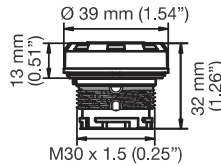
◆ Others Certification ①

- INMETRO Certificate: BVC 10.0044-U

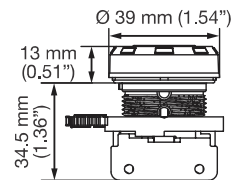


Dimensions in Millimeters

Rail Mounted Contacts



Panel Mounted Contacts



① Inmetro certification available on special request only. Contact your local sales for more information.

Unicode® 2 Series Accessories : Push Buttons

Components for Increased Safety Enclosures

Zone 1 and 2 – 21 and 22
Gas (G) and Dust (D)

	Weight in Kilograms		Volume dm ³		Pack	Catalog Number	
	Rail Mounted	Panel Mounted	Rail Mounted	Panel Mounted		Rail Mounted	Panel Mounted
Spring Return - Push Button (contact block to be ordered separately) <i>Legend plates, guards, blanking plugs (see Accessories page).</i>							
Red + Green	0.03	0.05	0.06	0.17	1	UAORGR	UAORGP
Green	0.03	0.05	0.06	0.17	1	UAOGR	UA0GP
Red	0.03	0.05	0.06	0.17	1	UAORR	UA0RP
White	0.03	0.05	0.06	0.17	1	UAOWR	UA0WP
Blue	0.03	0.05	0.06	0.17	1	UA0BR	UA0BP
Yellow	0.03	0.05	0.06	0.17	1	UA0YR	UA0YP
1-Pole Contact Blocks							
1 x NO						UCB5R	UCB5P
1 x NC	0.032		0.06		1	UCB9R	UCB9P
Spare Parts							
Rail to panel mounted conversion adaptor	0.02		0.08		1		UPMA

Marking	Color	Weight kg	Volume dm ³	Pack	Catalog Number	
Set of Five Spare Inserts						
(unmarked)	Green	0.01	0.01	1		UIAG
(unmarked)	Red	0.01	0.01	1		UIAR
(unmarked)	Yellow	0.01	0.01	1		UIAY
(unmarked)	White	0.01	0.01	1		UIAW
(unmarked)	Blue	0.01	0.01	1		UIAB
(unmarked)	Black	0.01	0.01	1		UIAN
ON	Green	0.01	0.01	1		UIA01
OFF	Red	0.01	0.01	1		UIA02
START	Green	0.01	0.01	1		UIA03
STOP	Red	0.01	0.01	1		UIA04
MARCHE	Green	0.01	0.01	1		UIA05
ARRET	Red	0.01	0.01	1		UIA06
I	Green	0.01	0.01	1		UIA07
O	Red	0.01	0.01	1		UIA08

Shaded catalog numbers are normally stocked items. All other items are made to order.

Unicode® 2 Series Accessories : Mushroom Push Buttons

Components for Increased Safety Enclosures

Zone 1 and 2 – 21 and 22
Gas (G) and Dust (D)

Features

- Can be equipped with up to 3 UCB Series Contact Blocks contact blocks.
- ATEX and IECEx certified.
- TS35 rail mounted.
- Panel mounted.

Standard Materials

- Body: polyamide
- Seal: ethylene propylene diene Monomer (M-class) rubber (EPDM)

Certifications and Compliances

◆ATEX/ IECEx Certification

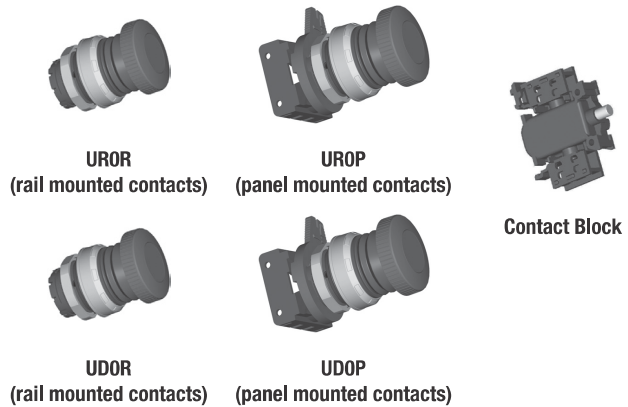
- Certification Type TCe
 - Gas: Zone 1 and 2
 - Conforming to ATEX 94/9/CE: Ⓔ II 2 G
 - Type of Protection: Ex e IIC Gb
 - Dust: Zone 21 and 22
 - Conforming to ATEX 94/9/CE: Ⓔ II 2 D
 - Type of Protection: Ex tb IIIC Db
 - Surface Temperature: -40 °C to +60 °C
 - CE Declaration of Conformity: 5C242
 - ATEX Certificate: LCIE 09 ATEX 3010U
 - IECEx Certificate: IECEx LCI 09.0011U
 - Index of Protection according EN/IEC 60529: IP66
 - Impact Resistance (shock): IK10

◆EURASEC Certification

- EURASEC RU C-FR. ГБ 05.B00909

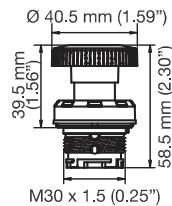
◆Others Certification ①

- INMETRO Certificate: BVC 10.0044-U

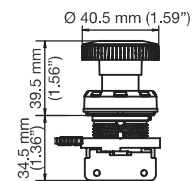


Dimensions in Millimeters

Rail Mounted Contacts



Panel Mounted Contacts



	Weight kg		Volume dm ³		Pack	Catalog Number	
	Rail Mounted	Panel Mounted	Rail Mounted	Panel Mounted		Rail Mounted	Panel Mounted
Spring Return Mushroom Head Push Button (contact block to be ordered separately)							
<i>Legend plates, guards, blanking plugs (see Accessories page).</i>							
Red	0.045	0.06	0.26	0.12	1	UR0R	UR0P
Black	0.045	0.06	0.26	0.12	1	UB0R	UB0P
Push-Pull Mushroom Head Push Button (contact block to be ordered separately)							
<i>Legend plates, guards, blanking plugs (see Accessories page).</i>							
Red Emergency Stop	0.045	0.06	0.12	0.26	1	UD0R	UD0P
1-Pole Contact Blocks							
1 x NO						UCB5R	UCB5P
1 x NC	0.032		0.06		1	UCB9R	UCB9P
Spare Parts							
Rail to panel mounted conversion adaptor	0.02		0.08		1		UPMA

① Inmetro certification available on special request only. Contact your local sales for more information.

Shaded catalog numbers are normally stocked items. All other items are made to order.

Unicode® 2 Series Accessories : Key Release Mushroom Push Buttons

Components for Increased Safety Enclosures

Zone 1 and 2 – 21 and 22
Gas (G) and Dust (D)

Features

- Can be equipped with up to 2 Unicode 2 Contact Blocks (UCB) Series contact blocks.
- ATEX certified.
- TS35 rail mounted.
- Panel mounted.

Standard Materials

- Body: thermosetting plastic
- Seal: ethylene propylene diene Monomer (M-class) rubber (EPDM)

Certifications and Compliances

◆ ATEX Certification

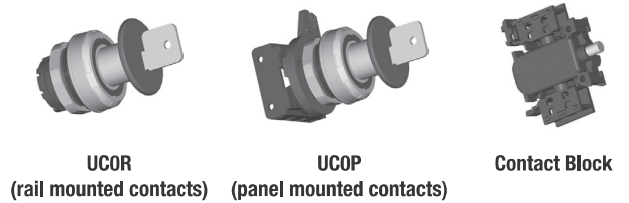
- Certification Type AUX
 - Gas: Zone 1 and 2
 - Conforming to ATEX 94/9/CE: Ⓔ II 2 G
 - Type of Protection: Ex e II
 - Dust: Zone 21 and 22
 - Conforming to ATEX 94/9/CE: Ⓔ II 2 D
 - Type of Protection: Ex tD A21
 - Surface Temperature: -20 °C to +70 °C
 - CE Declaration of Conformity: 5C206
 - ATEX Certificate: LCIE 00 ATEX 0002U
 - Index of Protection according EN/IEC 60529: IP66
 - Impact Resistance (shock): 7 Joules

◆ EURASEC Certification

- EURASEC RU C-FR.ГБ 05.B00909

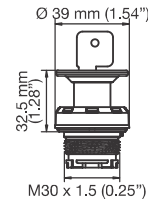
◆ Others Certification ①

- INMETRO Certificate: BVC 11.0644-U

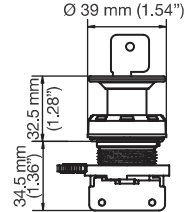


Dimensions in Millimeters

Rail Mounted Contacts



Panel Mounted Contacts



	Weight kg		Volume dm ³		Pack	Catalog Number	
	Rail Mounted	Panel Mounted	Rail Mounted	Panel Mounted		Rail Mounted	Panel Mounted
Key Release Mushroom Head Push Button (contact block to be ordered separately)							
<i>Legend plates, guards, blanking plugs (see Accessories page).</i>							
Red	0.085	0.096	0.09	0.25	1	UC0R	UC0P
1-Pole Contact Blocks							
1 x NO				0.06	1	UCB5R	UCB5P
1 x NC	0.032					UCB9R	UCB9P
Spare Parts							
Spare key (type 4A 185)		—		—	1	SK4A185	SK4A185
Rail to panel mounted conversion adaptor	0.02		0.08		1		UPMA

① Inmetro certification available on special request only. Contact your local sales for more information.

Shaded catalog numbers are normally stocked items. All other items are made to order.

Unicode® 2 Series Accessories : Key Momentary Push Buttons

Components for Increased Safety Enclosures

Zone 1 and 2 – 21 and 22
Gas (G) and Dust (D)

Features

- Can be equipped with up to 2 Unicode 2 Contact Blocks (UCB) Series contact blocks.
- ATEX certified.
- TS35 rail mounted.
- Panel mounted.

Standard Materials

- Body: thermosetting plastic
- Seal: ethylene propylene diene Monomer (M-class) rubber (EPDM)

Certifications and Compliances

◆ATEX Certification

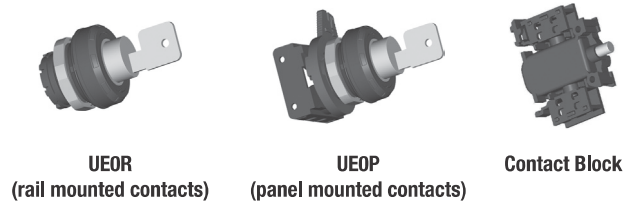
- Certification Type AUX
 - Gas: Zone 1 and 2
 - Conforming to ATEX 94/9/CE: Ⓔ II 2 G
 - Type of Protection: Ex e II
 - Dust: Zone 21 and 22
 - Conforming to ATEX 94/9/CE: Ⓔ II 2 D
 - Type of Protection: Ex tD A21
 - Surface Temperature: -20 °C to +70 °C
 - CE Declaration of Conformity: 5C206
 - ATEX Certificate: LCIE 00 ATEX 0002U
 - Index of Protection according EN/IEC 60529: IP66
 - Impact Resistance (shock): 7 Joules

◆EURASEC Certification

- EURASEC RU C-FR.ГБ 05.B00909

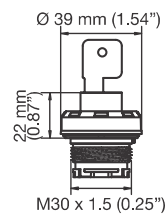
◆Others Certification ①

- INMETRO Certificate: BVC 11.0644-U

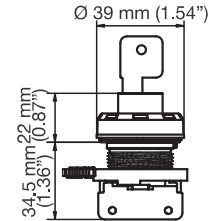


Dimensions in Millimeters (Inches)

Rail Mounted Contacts



Panel Mounted Contacts



	Weight kg		Volume dm ³			Catalog Number	
	Rail Mounted	Panel Mounted	Rail Mounted	Panel Mounted	Pack	Rail Mounted	Panel Mounted
Key Momentary Push Button (contact block to be ordered separately)							
<i>Legend plates, guards, blanking plugs (see Accessories page).</i>							
Key removable in both positions	0.080	0.093	0.08	0.20	1	UE0R	UE0P
Key removable in ON positions	0.080	0.093	0.08	0.20	1	UF0R	UF0P
Key removable in OFF positions	0.080	0.093	0.08	0.20	1	UG0R	UG0P
1-Pole Contact Blocks							
1 x NO						UCB5R	UCB5P
1 x NC	0.032		0.06		1	UCB9R	UCB9P
Spare Parts							
Spare key (type 4A 185)		—		—	1	SK4A185	SK4A185
Rail to panel mounted conversion adaptor	0.02		0.08		1		UPMA

① Inmetro certification available on special request only. Contact your local sales for more information.

Shaded catalog numbers are normally stocked items. All other items are made to order.

Unicode® 2 Series Accessories : Rotary Actuators

Components for Increased Safety Enclosures

Zone 1 and 2 – 21 and 22
Gas (G) and Dust (D)

Features

- Can be equipped with up to 2 Unicode 3 Contact Blocks (UCB) Series contact blocks.
- ATEX and IECEx certified.
- TS35 rail mounted.
- Panel mounted.

Standard Materials

- Body: thermosetting plastic
- Seal: ethylene propylene diene Monomer (M-class) rubber (EPDM)

Certifications and Compliances

◆ATEX/ IECEx Certification

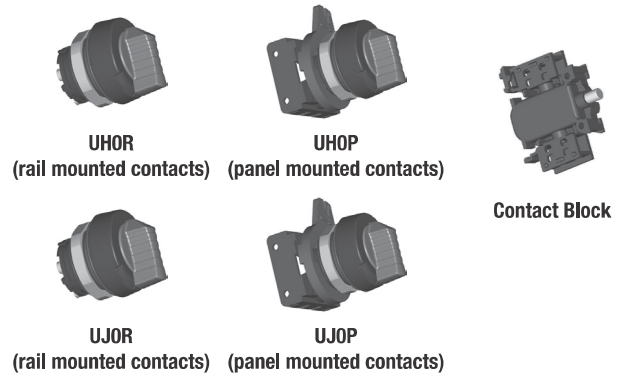
- Certification Type TCe
 - Gas: Zone 1 and 2
 - Conforming to ATEX 94/9/CE: Ⓢ II 2 G
 - Type of Protection: Ex e IIC Gb
 - Dust: Zone 21 and 22
 - Conforming to ATEX 94/9/CE: Ⓢ II 2 D
 - Type of Protection: Ex tb IIIC Db
 - Surface Temperature: -40 °C to +60 °C
 - CE Declaration of Conformity: 5C242
 - ATEX Certificate: LCIE 09 ATEX 3010U
 - IECEx Certificate: IECEx LCI 09.0011U
 - Index of Protection according EN/IEC 60529: IP66
 - Impact Resistance (shock): IK10

◆EURASEC Certification

- EURASEC RU C-FR. Г5 05.B00909

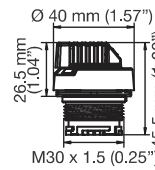
◆Others Certification ①

- INMETRO Certificate: BVC 11.0644-U

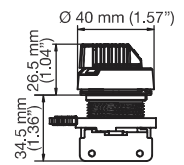


Dimensions in Millimeters

Rail Mounted Contacts



Panel Mounted Contacts



① Inmetro certification available on special request only. Contact your local sales for more information.

Unicode® 2 Series Accessories : Rotary Actuators

Components for Increased Safety Enclosures

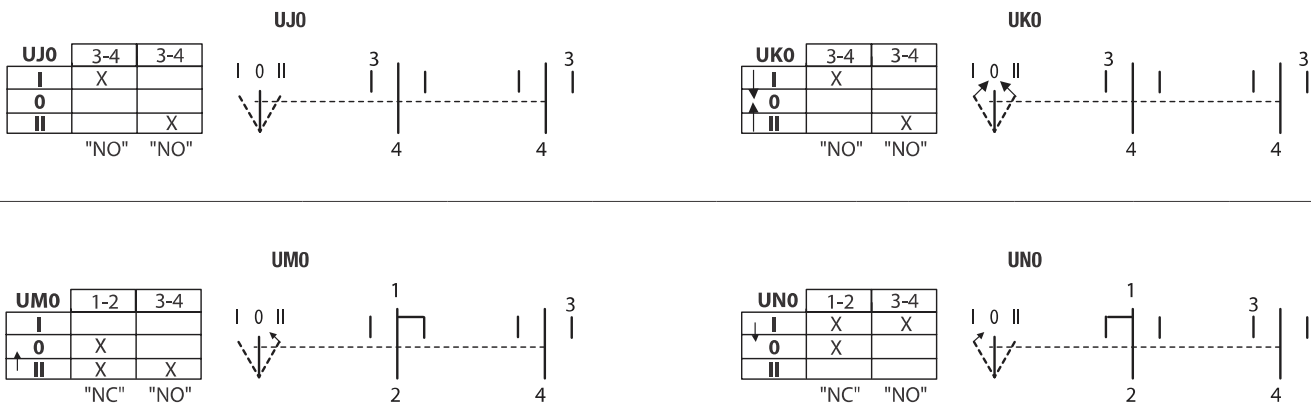
Zone 1 and 2 – 21 and 22
Gas (G) and Dust (D)

	Weight kg		Volume dm ³		Pack	Catalog Number	
	Rail Mounted	Panel Mounted	Rail Mounted	Panel Mounted		Rail Mounted	Panel Mounted
	2-Position Rotary Actuator (contact block to be ordered separately) <i>Legend plates, guards, blanking plugs (see Accessories page).</i>						
2-Positions Selector Switch (O-I), 2 maintained positions	0.038	0.051	0.09	0.22	1	UH0R	UH0P
3-Position Rotary Actuator (contact block to be ordered separately) <i>Legend plates, guards, blanking plugs (see Accessories page).</i>							
3-Position Selector Switch, I and II position maintained (I-O-II)	0.038	0.051	0.09	0.22	1	UJ0R	UJ0P
3-Position Selector Switch, I and II spring return to O (I->O<-II)	0.038	0.051	0.09	0.22	1	UK0R	UK0P
3-Position Selector Switch, I maintained, II spring return to O (I-O<-II)	0.038	0.051	0.09	0.22	1	UM0R	UM0P
3-Position Selector Switch, I spring return to O, II maintained (I->O-II)	0.038	0.051	0.09	0.22	1	UN0R	UN0P
1-Pole Contact Blocks							
1 x NO	0.032		0.06		1	UCB5R	UCB5P
1 x NC						UCB9R	UCB9P
Spare Parts							
Rail to panel mounted conversion adaptor	0.02		0.08		1	—	UPMA

Controls

CONTROL STATIONS AND SWITCHES - INCREASED SAFETY

Wiring Diagrams



Shaded catalog numbers are normally stocked items. All other items are made to order.

Unicode® 2 Series Accessories : Illuminated Push Buttons

Components for Increased Safety Enclosures

Zone 1 and 2 – 21 and 22
Gas (G) and Dust (D)

Features

- Can be equipped with up to 2 Unicode 2 Contact Blocks (UCB) Series contact blocks — not supplied.
- ATEX and IECEx certified.
- TS35 rail mounted.
- High intensity single LED light.
- Long lifetime over 100,000 hours.
- Panel mounted.
- Rated operating voltage (Ue): 12 Vac to 254 Vac, 50/60 Hz and 12 Vdc to 60 Vdc.
- Terminal connection: 2,5 mm²
- Operational life: 100,000 hours.

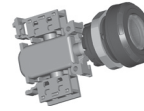
Standard Materials

- Body: polyamide
- Lens: polycarbonate
- Seal: ethylene propylene diene Monomer (M-class) rubber (EPDM)

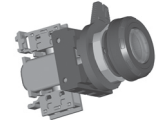
Certifications and Compliances

◆ ATEX/ IECEx Certification

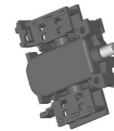
- **Certification Type TCe (Actuator and Lens).**
 - Gas: Zone 1 and 2
 - Conforming to ATEX 94/9/CE: Ⓢ II 2 G
 - Type of Protection: Ex e IIC Gb
 - Dust: Zone 21 and 22
 - Conforming to ATEX 94/9/CE: Ⓢ II 2 D
 - Type of Protection: Ex tb IIIC Db
 - Surface Temperature: -40 °C to +60 °C
 - CE Declaration of Conformity: 5C242
 - ATEX Certificate: LCIE 09 ATEX 3010U
 - IECEx Certificate: IECEx LCI 09.0011U
 - Index of Protection according EN/IEC 60529: IP66
 - Impact Resistance (shock): IK10
- **Certification Type CVe (Contact Block and Pilot Light)**
 - Gas: Zone 1 and 2
 - Conforming to ATEX 94/9/CE: Ⓢ II 2 G
 - Type of Protection: Ex e IIC
 - Dust: Zone 21 and 22
 - Conforming to ATEX 94/9/CE: Ⓢ II 2 D
 - Type of Protection: Ex tD A21
 - Surface Temperature: -40 °C to +75 °C
 - CE Declaration of Conformity: 5C243
 - ATEX Certificate: LCIE 09 ATEX 3001U
 - IECEx Certificate: IECEx LCI 09.0002U



ULG0H
(rail mounted contacts)



ULGOP
(panel mounted contacts)



Contact Block



UIL08

◆ EURASEC Certification

- **Certification Type TCe (Actuator and Lens).**
 - EURASEC RU C-FR. ГБ 05.B00909
- **Certification Type CVe (Contact Block and Pilot Light)**
 - EURASEC RU C-FR. ГБ 05.B00909
- ◆ Others Certification ①
 - **Certification Type TCe (Actuator and Lens).**
 - INMETRO Certificate: BVC 10.0044-U
 - **Certification Type CVe (Contact Block and Pilot Light)**
 - INMETRO Certificate: BVC 10.0047-U

① Inmetro certification available on special request only. Contact your local sales for more information.

Unicode® 2 Series Accessories : Illuminated Push Buttons

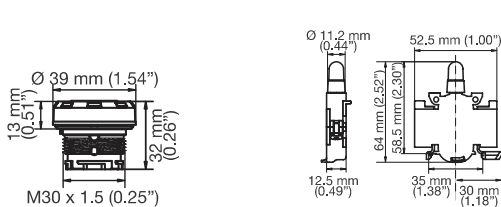
Components for Increased Safety Enclosures

Zone 1 and 2 – 21 and 22
Gas (G) and Dust (D)

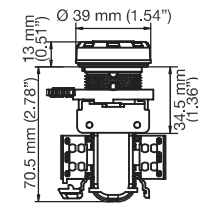
	Weight kg		Volume dm ³		Pack	Catalog Number	
	Rail Mounted	Panel Mounted	Rail Mounted	Panel Mounted		Rail Mounted	Panel Mounted
Spring Return Illuminated Push Button (contact block to be ordered separately) <i>Legend plates, guards, blanking plugs (see Accessories page).</i>							
Green	0.062	0.075	0.26	0.28	1	ULG0R	ULG0P
Red	0.062	0.075	0.26	0.28	1	ULR0R	ULR0P
White	0.062	0.075	0.26	0.28	1	ULW0R	ULW0P
Blue	0.062	0.075	0.26	0.28	1	ULB0R	ULB0P
Yellow	0.062	0.075	0.26	0.28	1	ULY0R	ULY0P
1-Pole Contact Blocks							
1 x NO						UCB5R	UCB5P
1 x NC	0.032		0.06		1	UCB9R	UCB9P
Spare Parts							
Rail to panel mounted conversion adaptor	0.02		0.08		1	—	UPMA

Marking	Color	Weight kg	Volume dm ³	Pack	Catalog Number
Set of Five Spare Inserts					
(unmarked)	Green	0.01	0.01	1	UIAG
(unmarked)	Red	0.01	0.01	1	UIAR
(unmarked)	Yellow	0.01	0.01	1	UIAY
(unmarked)	White	0.01	0.01	1	UIAW
(unmarked)	Blue	0.01	0.01	1	UIAB
(unmarked)	Black	0.01	0.01	1	UIAN
ON	Green	0.01	0.01	1	UIA01
OFF	Red	0.01	0.01	1	UIA02
START	Green	0.01	0.01	1	UIA03
STOP	Red	0.01	0.01	1	UIA04
MARCHE	Green	0.01	0.01	1	UIA05
ARRET	Red	0.01	0.01	1	UIA06
I	Green	0.01	0.01	1	UIA07
O	Red	0.01	0.01	1	UIA08

Dimensions in Millimeters



Rail Mounted Contacts



Panel Mounted Contacts

Wiring Diagram



Shaded catalog numbers are normally stocked items. All other items are made to order.

Unicode® 2 Series Accessories : Pilot Lights

Components for Increased Safety Enclosures

Zone 1 and 2 – 21 and 22
Gas (G) and Dust (D)

Features

- ATEX and IEC certified.
- TS35 rail mounted.
- High intensity single LED light.
- Long lifetime over 100,000 hours.
- Rated operating voltage (Ue): 12 Vac to 254 Vac, 50/60 Hz and 12 Vdc to 60 Vdc.
- Terminal connection: 2.5 mm²
- Operational life: 100,000 hours.

Standard Materials

- Body: polyamide
- Lens: polycarbonate
- Seal: ethylene propylene diene Monomer (M-class) rubber (EPDM)

Certifications and Compliances

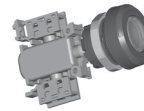
◆ATEX/ IECEx Certification

• Certification Type TCe (Actuator and Lens)

- Gas: Zone 1 and 2
- Conforming to ATEX 94/9/CE: Ⓢ II 2 G
- Type of Protection: Ex e IIC Gb
- Dust: Zone 21 and 22
- Conforming to ATEX 94/9/CE: Ⓢ II 2 D
- Type of Protection: Ex tb IIIC Db
- Surface Temperature: -40 °C to +60 °C
- CE Declaration of Conformity: 5C242
- ATEX Certificate: LCIE 09 ATEX 3010U
- IECEx Certificate: IECEx LCI 09.0011U
- Index of Protection according EN/IEC 60529: IP66
- Impact Resistance (shock): IK10

• Certification Type CVe (Contact Block and Pilot Light)

- Gas: Zone 1 and 2
- Conforming to ATEX 94/9/CE: Ⓢ II 2 G
- Type of Protection: Ex e IIC
- Dust: Zone 21 and 22
- Conforming to ATEX 94/9/CE: Ⓢ II 2 D
- Type of Protection: Ex tD A21
- Surface Temperature: -40 °C to +75 °C
- CE Declaration of Conformity: 5C243
- ATEX Certificate: LCIE 09 ATEX 3001U
- IECEx Certificate: IECEx LCI 09.0002U



UPGOR
(rail mounted contacts)



UPGOP
(panel mounted contacts)

◆EURASEC Certification

• Certification Type TCe (Actuator and Lens).

- EURASEC RU C-FR. ГБ 05.B00909

• Certification Type CVe (Contact Block and Pilot Light)

- EURASEC RU C-FR. ГБ 05.B00909

◆Others Certification ①

• Certification Type TCe (Actuator and Lens).

- INMETRO Certificate: BVC 10.0044-U

• Certification Type CVe (Contact Block and Pilot Light)

- INMETRO Certificate: BVC 10.0047-U

① Inmetro certification available on special request only. Contact your local sales for more information.

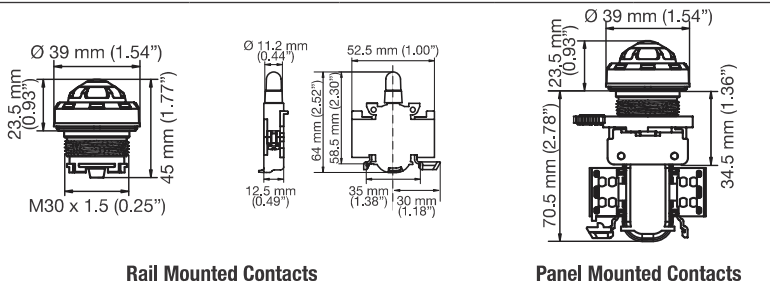
Unicode® 2 Series Accessories : Pilot Lights

Components for Increased Safety Enclosures

Zone 1 and 2 – 21 and 22
Gas (G) and Dust (D)

	Weight kg		Volume dm ³		Pack	Catalog Number	
	Rail Mounted	Panel Mounted	Rail Mounted	Panel Mounted		Rail Mounted	Panel Mounted
Pilot Light: 12 Vac to 254, Vac 50/60 Hz, 12 Vdc to 60 Vdc <i>Legend plates, guards, blanking plugs (see Accessories page).</i>							
Green	0.056	0.069	0.29	0.31	1	UPG0R	UPG0P
Red	0.056	0.069	0.29	0.31	1	UPR0R	UPR0P
White	0.056	0.069	0.29	0.31	1	UPW0R	UPW0P
Blue	0.056	0.069	0.29	0.31	1	UPB0R	UPB0P
Yellow	0.056	0.069	0.29	0.31	1	UPY0R	UPY0P
Spare Parts							
Rail to panel mounted conversion adaptor		0.02		0.08	1		UPMA
Spare Lenses							
Green		0.03		0.06	1	UPGL	UPGL
Red		0.03		0.06	1	UPRL	UPRL
White		0.03		0.06	1	UPWL	UPWL
Blue		0.03		0.06	1	UPBL	UPBL
Yellow		0.03		0.06	1	UPYL	UPYL

Dimensions in Millimeters



Rail Mounted Contacts

Panel Mounted Contacts

Wiring Diagram



Shaded catalog numbers are normally stocked items. All other items are made to order.

Unicode® 2 Series Accessories : 1-Pole Contact Block

Components for Increased Safety Enclosures

Zone 1 and 2 – 21 and 22
Gas (G) and Dust (D)

Features

- ATEX and IECEx certified.
- TS35 rail mounted.
- Panel mounted.
- High performance contact block suitable for low intensity (less than 5mA).
- Rated operating voltage (Ue): 500 Vac – 110 Vdc
- Switching capacity:
 - AC12: 16 Amp/400 Vac
 - AC14: 10 Amp/400 Vac
 - AC15: 6 Amp/500 Vac
 - DC13: 2 Amp/24 Vdc and 1 Amp/110 Vdc
- Terminal connection: 2,5 mm²
- Operational life: 100,000 hours.

Standard Materials

- Body: polyamide
- Contact: silver alloy

Certifications and Compliances

◆ ATEX/ IECEx Certification

• Certification Type CVe

- Gas: Zone 1 and 2
 - Conforming to ATEX 94/9/CE: Ⓢ II 2 G
 - Type of Protection: Ex e IIC
- Dust: Zone 21 and 22
 - Conforming to ATEX 94/9/CE: Ⓢ II 2 D
 - Type of Protection: Ex tD A21
- Surface Temperature: -40 °C to +75 °C
- CE Declaration of Conformity: 5C243
- ATEX Certificate: LCIE 09 ATEX 3001U
- IECEx Certificate: IECEx LCI 09.0002U

◆ EURASEC Certification

- EURASEC RU C-FR. ГБ 05.B00909

◆ Others Certification ①

- INMETRO Certificate: BVC 10.0047-U

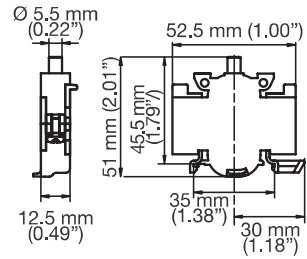


UCB5R
Rail Mounted Contacts
Top Access



UCB5P
Panel Mounted Contacts
Bottom Access

Dimensions in Millimeters

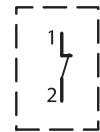


Wiring Diagram

NO



NC



	Weight kg	Volume dm ³	Pack	Catalog Number	
				Rail Mounted	Panel Mounted
1-Pole Contact Blocks					
1 x NO	0.032	0.06	1	UCB5R	UCB5P
1 x NC	0.032	0.06	1	UCB9R	UCB9P

① Inmetro certification available on special request only. Contact your local sales for more information.

Shaded catalog numbers are normally stocked items. All other items are made to order.

Unicode® 2 Series Accessories : 16 Amp Switches

Components for Increased Safety Enclosures

Zone 1 and 2 – 21 and 22
Gas (G) and Dust (D)

Features

- 2, 3, 4, 6 or 8-pole switches
 - TS35 rail mounted.
 - Panel mounted.
 - Padlockable.
 - Can be equipped with switch and changeover switch contact blocks.
- Switching capacity:
 - AC 1, 16 Amp, 690 Vac
 - AC 3, 8 Amp, 500 Vac
 - AC 3, 4 Amp, 690 Vac
 - AC 15, 16 Amp, 415 Vac
 - DC 1, 10 Amp, 24 Vdc
 - DC 1, 6 Amp, 60 Vdc
 - DC 1: 6 Amp/110 Vdc (2 contacts wired in series)
 - DC 1: 6 Amp/220 Vdc (3 contacts in series)
- Terminal connection: 1.5 mm² - 2.5 mm² (stranded), 1.5 mm² - 4 mm² (solid)
- Operational life: 10,000 cycles.

Standard Materials

- Body: polyamide
- Contact: silver

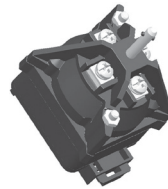
Certifications and Compliances ①

◆ATEX/ IECEx Certification

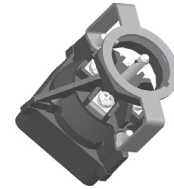
- **Certification Type SW16 (Switches)**
 - Gas: Zone 1 and 2
 - Conforming to ATEX 94/9/CE: Ⓢ II 2 G
 - Type of Protection: Ex db eb IIC
 - Dust: Zone 21 and 22
 - Must be used in an approved dustproof enclosure
 - Operating Temperature: -55 °C to +80 °C
 - CE Declaration of Conformity: 5C249
 - ATEX Certificate: LCIE 12 ATEX 3068U
 - IEC Certificate: IECEx LCIE 12.0021U
- **Certification Type AUXe (Handles) ②**
 - Gas: Zone 1 and 2
 - Conforming to ATEX 94/9/CE: Ⓢ II 2 G
 - Type of Protection: Ex e II
 - Dust: Zone 21 and 22
 - Conforming to ATEX 94/9/CE: Ⓢ II 2 D
 - Type of Protection: Ex tD A21
 - IP66 IK10
 - Ambient Temperature: -20 °C to +55 °C
 - CE Declaration of Conformity: 5C221
 - ATEX Certificate: LCIE 03 ATEX 0012U

◆EURASEC Certification

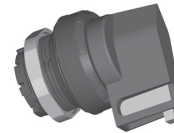
- **Certification Type SW16 (Switches)**
 - EURASEC RU C-FR. ГБ 05.B00909



US30R
(rail mounted switch)



US30P
(panel mounted switch)



USH ②
(switch handle)

① These products are certified only when used as components in factory assembled panels.

② USH handle is ATEX certified it is not for use in IECEx explosive atmospheres.

Unicode® 2 Series Accessories : 16 Amp Switches

Components for Increased Safety Enclosures

Zone 1 and 2 – 21 and 22
Gas (G) and Dust (D)

	Diagram Number	Wiring Diagram	Catalog Number	
			Rail Mounted	Panel Mounted
Two Pole Selector Switches (handle to be ordered separately)				
2 position 2-pole selector switch	002		US16220002R <i>(old p/n: US32R)</i>	US16220002P <i>(old p/n: US32P)</i>
2 position 2-pole selector switch	016		US16220016R <i>(old p/n: US30R)</i>	US16220016P <i>(old p/n: US30P)</i>
3 position 2-pole selector switch	027		US16230027R <i>(old p/n: US31R)</i>	US16230027P <i>(old p/n: US31P)</i>
3 position 2-pole selector switch with spring return from 135° to 90°	038		US16230038R <i>(old p/n: US33R)</i>	US16230038P <i>(old p/n: US33P)</i>
3 position 2-pole selector switch with spring return from 45° to 90°	048		US16230048R <i>(old p/n: US34R)</i>	US16230048P <i>(old p/n: US34P)</i>
Three or Four Pole Selector Switches (handle to be ordered separately)				
2 position 4-pole selector switch	102		US16420102R <i>(old p/n: US35R)</i>	US16420102P <i>(old p/n: US35P)</i>
3 position 4-pole selector switch	119		US16430119R <i>(old p/n: US36R)</i>	US16430119P <i>(old p/n: US36P)</i>
2 position 4-pole selector switch	106		US16420106R <i>(old p/n: US37R)</i>	US16420106P <i>(old p/n: US37P)</i>
3 position 3-pole — Late break, early make selector switch with spring return from 45° to 90°	138		US16330138R <i>(old p/n: US38R)</i>	US16330138P <i>(old p/n: US38P)</i>
Padlockable handle for all selector switches			USH ①	

① USH handle is ATEX Certified, it is not for use in IECEx explosive atmospheres.

Shaded catalog numbers are normally stocked items. All other items are made to order.

Unicode® 2 Series Accessories : 16 Amp Switches

Components for Increased Safety Enclosures

Zone 1 and 2 – 21 and 22
Gas (G) and Dust (D)

Switch Units - Add P for Panel Mounted or R for DIN Rail Mounted - Example US1612-0056R

Wiring Diagram	Catalog Number	Wiring Diagram	Catalog Number
1-pole 2 position			
	US16120056_		US16120061_
2-pole 2 position			
	US16220002_		US16220015_
	US16220003_		US16220016_
	US16220004_		US16220017_
	US16220005_		US16220018_
	US16220007_		US16220019_
	US16220008_		US16220020_
	US16220009_		US16220021_
	US16220010_		US16220043_
	US16220011_		US16220045_
	US16220012_		US16220053_
	US16220013_		US16220073_
	US16220014_		US16220074_
2-pole 3 position			
	US16230022_		US16230025_
	US16230023_		US16230026_
	US16230024_		US16230027_

Controls

CONTROL STATIONS AND SWITCHES - INCREASED SAFETY

Unicode® 2 Series Accessories : 16 Amp Switches

Components for Increased Safety Enclosures

Zone 1 and 2 – 21 and 22
Gas (G) and Dust (D)

Switch Units - Add P for Panel Monted or R for DIN Rail Monted - Example US1612-0056R

Wiring Diagram	Catalog Number	Wiring Diagram	Catalog Number
2-pole 3 position			
	US16230028_		US16230050_
	US16230029_		US16230051_
	US16230030_		US16230052_
	US16230031_		US16230054_
	US16230032_		US16230055_
	US16230038_		US16230059_
	US16230039_		US16230068_
	US16230040_		US16230070_
	US16230041_		US16230071_
	US16230042_		US16230072_
	US16230046_		US16230075_
	US16230047_		US16230076_
	US16230048_		US16230087_
	US16230049_		US16239002_

Unicode® 2 Series Accessories : 16 Amp Switches

Components for Increased Safety Enclosures

Zone 1 and 2 – 21 and 22
Gas (G) and Dust (D)

Switch Units - Add P for Panel Mounted or R for DIN Rail Mounted - Example US1612-0056R

Wiring Diagram	Catalog Number	Wiring Diagram	Catalog Number
2-pole 4 position			
	US16240044_		US16240062_
	US16240057_		US16240065_
	US16240058_		US16240084_
2-pole 8 position			
	US16280036_	—	—
3-pole 2 position			
	US16320122_		US16321153_
3-pole 3 position			
	US16330136_		US16331112_
	US16330138_		US16331120_
	US16330144_		US16331142_
	US16330145_		US16331155_
	US16330161_		US16331171_
	US16330167_		US16331202_
	US16330199_		US16331209_
	US16331109_		US16331210_

Controls

CONTROL STATIONS AND SWITCHES - INCREASED SAFETY

Unicode® 2 Series Accessories : 16 Amp Switches

Components for Increased Safety Enclosures

Zone 1 and 2 – 21 and 22
Gas (G) and Dust (D)

Switch Units - Add P for Panel Mounted or R for DIN Rail Mounted - Example US1612-0056R

Wiring Diagram	Catalog Number	Wiring Diagram	Catalog Number
3-pole 3 position			
	US16331230_	-	-
3-pole 4 position			
	US16340146_		US16340183_
	US16340168_		US16341119_
	US16340178_		US16341145_
	US16340181_		US16341151_
4-pole 2 position			
	US16420102_		US16420137_
	US16420103_		US16420152_
	US16420104_		US16420154_
	US16420105_		US16420173_
	US16420106_		US16421105_
	US16420107_		US16421122_
	US16420116_		US16421147_
	US16420134_		US16421162_
	US16420135_		US16421234_
4-pole 3 position			
	US16430111_		US16430113_
	US16430112_		US16430114_

Controls

CONTROL STATIONS AND SWITCHES - INCREASED SAFETY

Unicode® 2 Series Accessories : 16 Amp Switches

Components for Increased Safety Enclosures

Zone 1 and 2 - 21 and 22
Gas (G) and Dust (D)

Switch Units - Add P for Panel Mounted or R for DIN Rail Mounted - Example US1612-0056R

Wiring Diagram	Catalog Number	Wiring Diagram	Catalog Number
	US16430118_		US16430169_
	US16430119_		US16430170_
	US16430120_		US16430175_
	US16430121_		US16430176_
	US16430127_		US16430180_
	US16430129_		US16431103_
	US16430131_		US16431104_
	US16430132_		US16431106_
	US16430133_		US16431108_
	US16430139_		US16431111_
	US16430140_		US16431113_
	US16430153_		US16431116_
	US16430157_		US16431125_
	US16430158_		US16431129_
	US16430159_		US16431134_
	US16430160_		US16431138_
	US16430162_		US16431159_

Controls

CONTROL STATIONS AND SWITCHES - INCREASED SAFETY

Unicode® 2 Series Accessories : 16 Amp Switches

Components for Increased Safety Enclosures

Zone 1 and 2 – 21 and 22
Gas (G) and Dust (D)

Switch Units - Add P for Panel Mounted or R for DIN Rail Mounted - Example US1612-0056R

Wiring Diagram	Catalog Number	Wiring Diagram	Catalog Number
4-pole 3 position			
	US16431165_		US16431206_
	US16431166_		US16431208_
	US16431167_		US16431213_
	US16431172_		US16431215_
	US16431173_		US16431217_
	US16431174_		US16431220_
	US16431176_		US16431222_
	US16431178_		US16431225_
	US16431179_		US16431226_
	US16431201_		US16431232_
	US16431203_		US16439001_
4-pole 4 position			
	US16440110_		US16440147
	US16440123_		US16440148_
	US16440130_		US16440150_
	US16440143_		US16440151_

Visit our website at www.appletonelec.com or contact us at +33.3.22.54.27.54.
© March 2016

Unicode® 2 Series Accessories : 16 Amp Switches

Components for Increased Safety Enclosures

Zone 1 and 2 – 21 and 22
Gas (G) and Dust (D)

Switch Units - Add P for Panel Mounted or R for DIN Rail Mounted - Example US1612-0056R

Wiring Diagram	Catalog Number	Wiring Diagram	Catalog Number
	US16440155_		US16441128_
	US16440156_		US16441132_
	US16440164_		US16441133_
	US16440171_		US16441136_
	US16440198_		US16441139_
	US16440608_		US16441143_
	US16440611_		US16441144_
	US16440614_		US16441146_
	US16441102_		US16441154_
	US16441114_		US16441156_
	US16441115_		US16441163_
	US16441124_		US16441164_
	US16441127_		US16441168_

Controls

CONTROL STATIONS AND SWITCHES - INCREASED SAFETY

Unicode® 2 Series Accessories : 16 Amp Switches

Components for Increased Safety Enclosures

Zone 1 and 2 – 21 and 22
Gas (G) and Dust (D)

Switch Units - Add P for Panel Monted or R for DIN Rail Monted - Example US1612-0056R

Wiring Diagram	Catalog Number	Wiring Diagram	Catalog Number
4-pole 4 position			
	US16441169_		US16441211_
	US16441180_		US16441212_
	US16441204_		US16441219_
	US16441205_		US16441224_
	US16441207_		US16441229_
4-pole 5 position			
	US16451110_		US16451235_

Controls

CONTROL STATIONS AND SWITCHES - INCREASED SAFETY

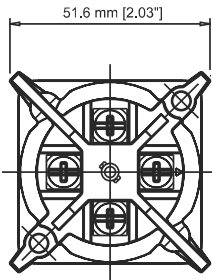
Unicode® 2 Series Accessories : 16 Amp Switches

Components for Increased Safety Enclosures

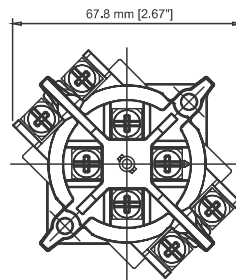
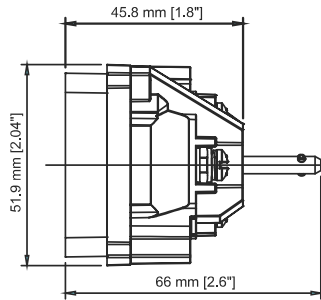
Zone 1 and 2 – 21 and 22
Gas (G) and Dust (D)

Dimensions in Millimeters

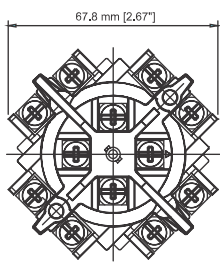
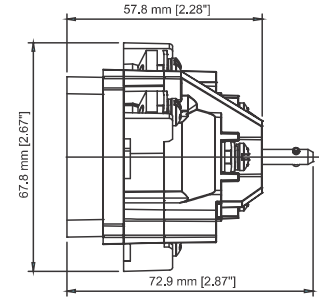
16 Amp Switches



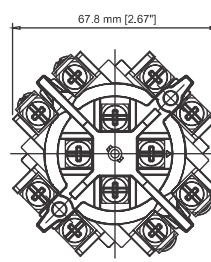
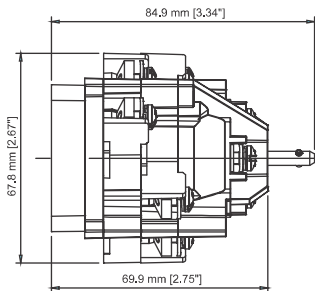
2-pole



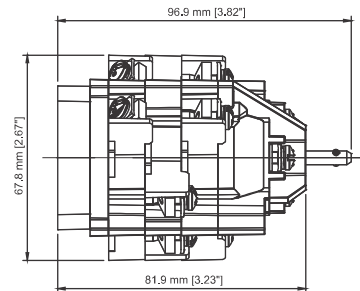
3- and 4-pole



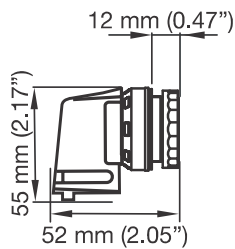
6-pole



8-pole



USH Handle ①



① USH handle is ATEX Certified, it is not for use in IECEx explosive atmospheres.

Unicode® 2 Series Accessories

Components for Increased Safety Enclosures

Zone 1 and 2 – 21 and 22
Gas (G) and Dust (D)

Nameplates — Set of 10

Blank self-adhesive, laminated plastic 58 mm x 18 mm.

Color	Catalog Number
White (black letters)	UNPW
Yellow (black letters)	UNPY
Red (white letters)	UNPR
Blue (white letters)	UNPB
Black (white letters)	UNPN
Green (white letters)	UNPG

Inserts for Push Button — Set of 5

Marking	Color	Catalog Number
(unmarked)	Green	UIAG
(unmarked)	Red	UIAR
(unmarked)	Yellow	UIAY
(unmarked)	White	UIAW
(unmarked)	Blue	UIAB
(unmarked)	Black	UIAN
ON	Green	UIA01
OFF	Red	UIA02
START	Green	UIA03
STOP	Red	UIA04
MARCHE	Green	UIA05
ARRET	Red	UIA06
I	Green	UIA07
O	Red	UIA08

Inserts for Illuminated Push Button — Set of 5

Marking	Color	Catalog Number
(unmarked)	Green	UILG
(unmarked)	Red	UILR
(unmarked)	Yellow	UILY
(unmarked)	White	UILW
(unmarked)	Blue	UILB
ON	Green	UIL01
OFF	Red	UIL02
START	Green	UIL03
STOP	Red	UIL04
MARCHE	Green	UIL05
ARRET	Red	UIL06
I	Green	UIL07
O	Red	UIL08

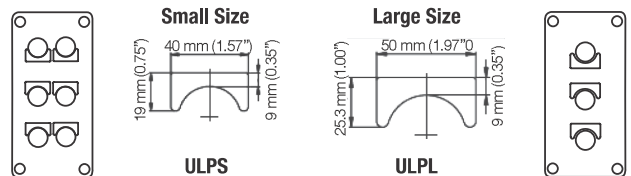
Spare Key

For all key-operated buttons.

Description	Catalog Number
Spare key type 4 A 185	SK4A185

Standard Legend Plates

Two sizes available. Self-adhesive yellow laminated plastic (black lettering).


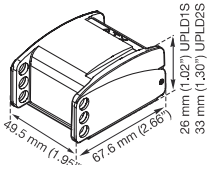




Text	Catalog Number	
	Small	Large
Blank (set of 10)	ULPS	ULPL
ON	ULPSA01	ULPLA01
OFF	ULPSA02	ULPLA02
FORWARD	ULPSA03	ULPLA03
REVERSE	ULPSA04	ULPLA04
JOG	ULPSA05	ULPLA05
RUN	ULPSA06	ULPLA06
START	ULPSA07	ULPLA07
STOP	ULPSA08	ULPLA08
UP	ULPSA09	ULPLA09
DOWN	ULPSA10	ULPLA10
FAST	ULPSA11	ULPLA11
SLOW	ULPSA12	ULPLA12
RAISE	ULPSA13	ULPLA13
LOWER	ULPSA14	ULPLA14
OPEN	ULPSA15	ULPLA15
CLOSE	ULPSA16	ULPLA16
LOW	ULPSA17	ULPLA17
HIGH	ULPSA18	ULPLA18
TEST	ULPSA19	ULPLA19
RESET	ULPSA20	ULPLA20
EMERGENCY STOP	ULPSA21	ULPLA21
MARCHE	ULPSA22	ULPLA22
ARRET	ULPSA23	ULPLA23
ARRET D'URGENCE	ULPSA24	ULPLA24
HAUT	ULPSA25	ULPLA25
BAS	ULPSA26	ULPLA26
O—I	ULPSH01	ULPLH01
ON—OFF	ULPSH02	ULPLH02
START—STOP	ULPSH03	ULPLH03
STOP—START	ULPSH04	ULPLH04
HAND—AUTO	ULPSH05	ULPLH05
MANU—AUTO	ULPSH06	ULPLH06
FORWARD—REVERSE	ULPSH07	ULPLH07
REMOTE—LOCAL	ULPSH08	ULPLH08
MARCHE—ARRET	ULPSH09	ULPLH09
I—O—II	ULPSJ01	ULPLJ01
OFF—O—ON	ULPSJ02	ULPLJ02
START—NORMAL—STOP	ULPSJ03	ULPLJ03
HAND—OFF—AUTO	ULPSJ04	ULPLJ04
MANU—O—AUTO	ULPSJ05	ULPLJ05
FORWARD—OFF—REVERSE	ULPSJ06	ULPLJ06
LOCAL—REMOTE—AUTO	ULPSJ07	ULPLJ07
LOCAL—O—REMOTE	ULPSJ08	ULPLJ08
MARCHE—NORMAL—ARRET	ULPSJ09	ULPLJ09

Unicode® 2 Series Accessories

Components for Increased Safety Enclosures

Zone 1 and 2 – 21 and 22
Gas (G) and Dust (D)

	Description	Catalog Number
	Yellow Guard Mushroom head protection for emergency stop	098657
	Padlockable Guard Stainless steel and plastic cover, capacity: 3 padlocks, 6 mm maximum diameter (not supplied) For push button and rotary actuator For mushroom head actuator	UPLD1S UPLD2S
	Cover Blanking Plug For cover drilling — 30.5 mm diameter	UBP
	Device Adaptor Rail to panel mounted conversion adaptor	UPMA

Shaded catalog numbers are normally stocked items. All other items are made to order.