

# JBDR Series Pre-Drilled Round Junction Boxes

## Flameproof

Zones 1 & 2 – 21 & 22  
Gas (G) and Dust (D)

### Applications

- Small terminal junction boxes designed to facilitate electrical connections in hazardous areas.
- Designed for use in Zone 1 or 2 areas, where flammable gases or vapors are present either continuously or intermittently.
- Ideal for use in wet or corrosive atmospheres such as:
  - Petroleum refineries
  - Chemical refineries
  - Other industrial process facilities
- Designed for use in Zone 21 or 22 areas, where flammable dusts are present either continuously or intermittently such as:
  - Food processing
  - Dairy
  - Brewing
  - Silos
  - Other facilities

### Features

- IK10 (20 Joules) high impact resistant box.
- Pillar type terminal block (4 x terminals) for easy connection.
- Terminal capacity: 4 x 4 mm<sup>2</sup> or 2 x 6 mm<sup>2</sup>.
- Internal Earth: ground plate with 4 x M4 screws for connection to 4 mm diameter lugs.
- External Earth: M5 screw.
- Back plate supplied.
- Operating temperature -40 °C to +55 °C.
- Housing: gray painted marine grade aluminum
- Hardware: stainless steel

### Certifications and Compliances

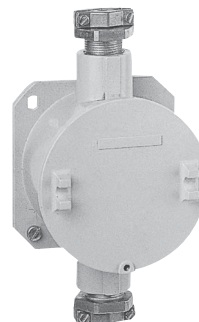
#### ◆ATEX Certification

- **Certification Type BR1d**
  - Gas, Zones 1 and 2:
    - Conforming to ATEX 94/9/CE: Ⓔ II 2 G
    - Type of Protection: Ex d IIC
    - Temperature class: T6 to T4
  - Dust, Zones 21 and 22:
    - Conforming to ATEX 94/9/CE: Ⓔ II 2 D
    - Type of Protection: Ex tD A21
    - Surface Temperature: T95 °C.
  - Ambient Temperature: -40 °C to +55 °C.
  - CE Declaration of Conformity: 50230
  - ATEX Certificate: LCIE 02 ATEX 6056
  - Index of Protection according EN/IEC 60529: IP66
  - Internal Volume: ≤ 2dm<sup>3</sup> (2 liters)
  - Index of Protection according EN/IEC 60529: IP66
  - Impact Resistance (shock): IK10

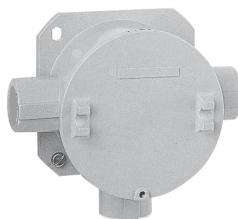
#### ◆EURASEC Certification

- **Certification Type BR1d**
  - EURASEC N° TC RU C-FR.Г505.B.00911

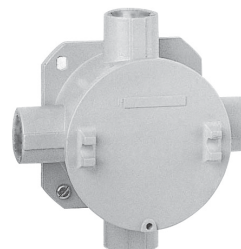
2 Entry Version with Cable Glands



3 Entry Version



4 Entry Version

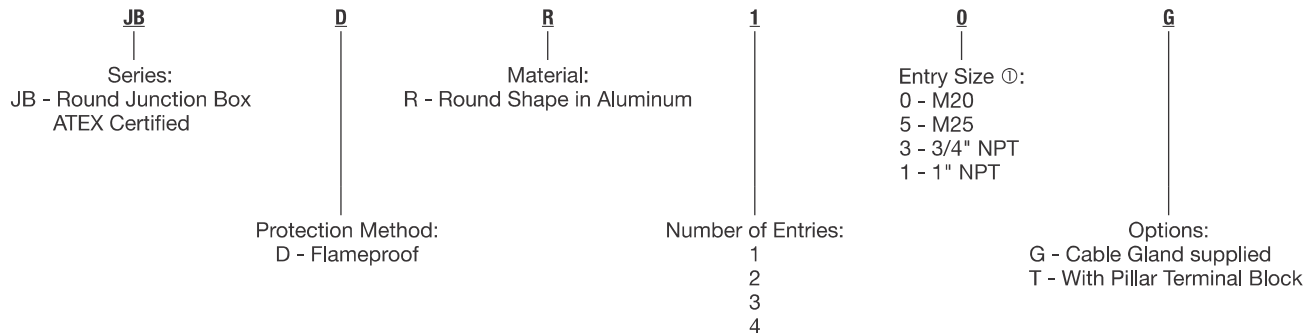





# JBDR Series Pre-Drilled Round Junction Boxes

## Flameproof

Zones 1 & 2 – 21 & 22  
Gas (G) and Dust (D)

### Catalog Numbering Guide — JBDR Series Pre-Drilled Round Junction Boxes



	Equipment	Weight kg	Volume dm³	Catalog Number
 <b>2 Entry</b>	<b>Threaded Entries with M25 Integrated Cable Gland:</b> <b>For unarmored cable: – sealed Ø: 9 to 15 mm (093496)</b>			
	2 x M25 entries (feed through) 2 integrated cable glands supplied	0.8	2	JBDR25G
	3 x M25 entries (in a “T”) 3 integrated cable glands supplied	0.8	2	JBDR35G
	4 x M25 entries (in a cross) 4 integrated cable glands supplied	0.9	2	JBDR45G
	<b>Threaded Entries for M20 Cable Gland – Not Supplied</b>			
 <b>3 Entry</b>	2 x M20 entries (feed through)	0.7	2	JBDR20
	3 x M20 entries (in a “T”)	0.7	2	JBDR30
	4 x M20 entries (in a cross)	0.8	2	JBDR40
	<b>Threaded Entries for NPT 3/4” Cable Gland – Not Supplied</b>			
 <b>4 Entry</b>	2 x 3/4” NPT entries (feed through)	0.7	2	JBDR23
	3 x 3/4” NPT entries (in a “T”)	0.7	2	JBDR33
	4 x 3/4” NPT entries (in a cross)	0.8	2	JBDR43
	<b>Threaded Entries for NPT 1” Cable Gland – Not Supplied</b>			
	4 x 1” NPT entries (in a cross)	0.8	2	JBDR41

### Accessories

Description	Weight kg	Volume dm³	Catalog Number
<b>Pillar Terminal Block</b>			
4 terminals 4 x 4 mm² or 2 x 6 mm² cables	0.1	0.4	TBP44
<b>M25 Integrated Cable Gland</b>			
for unarmored cables — dia. 9 to 15 mm	0.6	0.9	093496

① For other entry size, use adaptor.

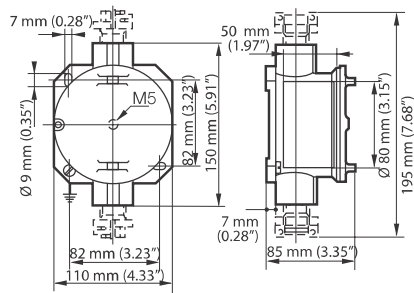
Shaded catalog numbers are normally stocked items. All other items are made to order.

# JBDR Series Pre-Drilled Round Junction Box Dimensions

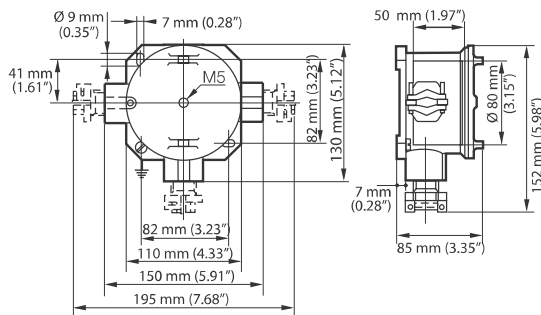
## Flameproof

Dimensions in Millimeters

2 Entry Version



3 Entry Version



4 Entry Version

