

# PRE Series 125 Amp Plugs and Sockets

## Increased Safety

Zone 1 and 2 - 21 and 22  
Gas (G) and Dust (D)

### Applications

- Plugs and sockets are used with stationary or portable electrically operated devices such as:
  - Welding devices
  - Lighting systems
  - Conveyors
  - Heaters
  - Motor generator sets
  - Air conditioning
  - Compressors
  - Pumps
- For use in corrosive atmospheres and installations in Zones 1, and 2 and 21 and 22 of oil and gas industry, such as:
  - Refineries
  - Chemical and petrochemical plants
  - Pipelines
  - Onshore and offshore drilling platforms
  - LNG Trains
  - Gas Compressor Stations

### Features

- Positive polarization: only ATX plugs of same style, number of poles and ampere rating may be used with these sockets.
- Interlocked 3-pole or 4-pole Ex de disconnecting on-load switch, with auxiliary early break contact – capacity 2.5 mm<sup>2</sup> maximum.
- Plug is mechanically locked in socket when switch is ON.
- Switch operating handle can be padlocked in OFF position (max 4 padlocks).
- Plug cannot be inserted or removed unless switch is in OFF position.

### Standard Materials

- Socket: 316L stainless steel
- Flap cover and plug: polyamide

### Certifications and Compliances

#### ◆ ATEX Certification

- **Certification Type PC125X**
  - Gas: Zones 1 and 2
    - Conforming to ATEX 94/9/CE: Ⓢ II 2 G
    - Type of Protection: Ex de IIC
    - Temperature class: T6 for Ta ≤ +40 °C and T5 for +55 °C
  - Dust: Zones 21 and 22
    - Conforming to ATEX 94/9/CE: Ⓢ II 2 D
    - Type of Protection: Ex tD A21
    - Surface Temperature: T90 °C
  - Ambient Temperature: -30 °C to +55 °C
  - Index of Protection according EN/IEC 60529: IP66
  - Impact Resistance (shock): IK10
  - CE Declaration of Conformity: 50218
  - ATEX Certificate: LCIE 99 ATEX 6031



Plug



Wall Mounting Socket

#### ◆ EURASEC Certification

- EURASEC N° TC RU C-FR.1505.B.00910

#### ◆ Others Certification

- INMETRO Certificate: BVC11.0596 ①

① Inmetro certification available on special request only. Contact your local sales for more information

# PRE Series 125 Amp Plugs and Sockets

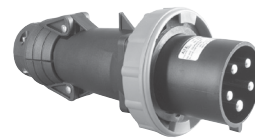
## Increased Safety

Zone 1 and 2 - 21 and 22  
Gas (G) and Dust (D)



Wall Mounting Socket

- One M63 cable gland for unarmored cable – Ø 36 to Ø 44 mm and one M25 blanking plug.
- Terminal capacity 120 mm<sup>2</sup>.



Plug

- One integrated cable entry for unarmored flexible cable – Ø 30 to Ø 48 mm.
- Terminals capacity 50 mm<sup>2</sup>

### 160 Amps

#### Main Contacts

Rated Insulation Voltage	690 Vac
Rated Operating Voltage	690 Vac
Rated Operating Current	125 Amp
Rated Surge Voltage	8 KV

#### Switching Capacity

AC 21 A / AC 22 A	125 Amp	400 Volt to 690 Volt
AC 23 A	80 kW	400 Volt
	110 kW	500 Volt
	55 kW	690 Volt
AC 3	90 kW	400 Volt
	70 kW	500 Volt
DC 21	125 Amp	220 Volt ①
	125 Amp	440 Volt ①
DC 22	125 Amp	220 Volt ①
	100 Amp	440 Volt ①
DC 23	125 Amp	220 Volt ①
	63 Amp	440 Volt ①

#### Auxiliary Contacts

Rated Insulation Voltage	230 Volt
Rated Operating Voltage	230 Volt
Rated Operating Current	10 Amp
Switching Capacity: AC 15	6 Amp 230 Volt

#### Others

Termination (flexible/solid)	120 mm <sup>2</sup>
------------------------------	---------------------

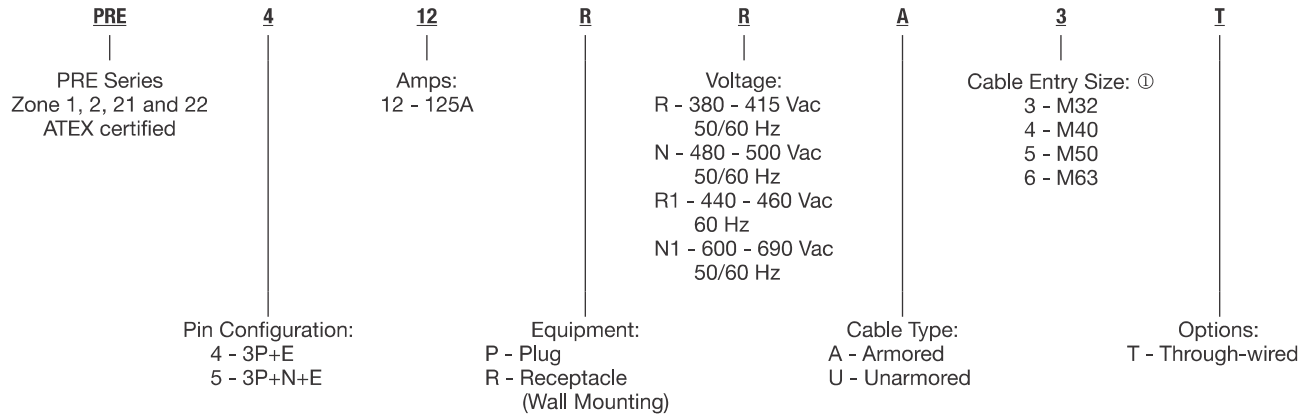
① 2 contacts connected in series per pole.

# PRE Series 125 Amp Plugs and Sockets

## Increased Safety

Zone 1 and 2 - 21 and 22  
Gas (G) and Dust (D)

### Catalog Numbering Guide



Plugs and Receptacles

INCREASED SAFETY EX E

### LV: Low Voltage

Red (R)	Black (N)	Red (R1)	Black (N1)
380/415 Vac	480/500 Vac	440/460 Vac	600/690 Vac

① With one M25 plugged entry.

# PRE Series 125 Amp Plugs and Sockets

## Increased Safety

Zone 1 and 2 - 21 and 22  
Gas (G) and Dust (D)

Plugs and Receptacles

INCREASED SAFETY EX E

Description	Pin Configuration	Weight kg	Volume dm <sup>3</sup>	Catalog Number
<b>380/415 Vac 50/60Hz — Red</b>				
Wall Socket		16.0	70.0	<b>PRE412RRU6</b>
Plug		1.1	13.0	<b>PRE412PR</b>
<b>440/460 Vac 60 Hz — Red</b>				
Wall Socket		16.0	70.0	<b>PRE512RRU6</b>
Plug		1.1	13.0	<b>PRE512PR</b>
(1) 200/346 V – 240/415 Vac 50/60 Hz				
<b>440/460 Vac 60 Hz — Red</b>				
Wall Socket		16.0	70.0	<b>PRE412RR1U6</b>
Plug		1.1	13.0	<b>PRE412PR1</b>
<b>480/500 Vac 50/60 Hz — Black</b>				
Wall Socket		16.0	70.0	<b>PRE512RR1U6</b>
Plug		1.1	13.0	<b>PRE512PR1</b>
(2) 250/440 V – 265/460 Vac 60 Hz				
<b>480/500 Vac 50/60 Hz — Black</b>				
Wall Socket		16.0	70.0	<b>PRE412RNU6</b>
Plug		1.1	13.0	<b>PRE412PN</b>
<b>600/690 Vac 50/60 Hz — Black</b>				
Wall Socket		16.0	70.0	<b>PRE512RNU6</b>
Plug		1.1	13.0	<b>PRE512PN</b>
(3) 277/480 V – 288/500 Vac 50/60 Hz				
<b>600/690 Vac 50/60 Hz — Black</b>				
Wall Socket		16.0	70.0	<b>PRE412RN1U6</b>
Plug		1.1	13.0	<b>PRE412PN1</b>
<b>600/690 Vac 50/60 Hz — Black</b>				
Wall Socket		16.0	70.0	<b>PRE512RN1U6</b>
Plug		1.1	13.0	<b>PRE512PN1</b>
(4) 347/600 V – 400/690 Vac 50/60 Hz				

Shaded catalog numbers are normally stocked items. All other items are made to order.

# PRE Series 125 Amp Plug and Socket

## Increased Safety

Zone 1 and 2 - 21 and 22  
Gas (G) and Dust (D)

### Dimensions

