

FDLED Series Luminaires

Flameproof

Zones 1 and 2 - 21 and 22
Gas (G) and Dust (D)

Applications

- Can be installed in hazardous areas designated as Zone 1 and 2 – 21 and 22.
- For use in locations where a high degree of corrosion resistance is required.
- For indoor/outdoor use where protection against dirt, water and moisture is necessary.
- Typical applications include:
 - Oil refineries
 - Petrochemical facilities
 - Pulp and paper, mills
 - Painting, sewage and water treatment facilities
 - Warehouses
 - Underground tunnels
 - General manufacturing facilities.

Features

- Impact resistant borosilicate glass sealed tube.
- Easy access to LED array through gray painted aluminum threaded entry cap.
- Supplied with O-ring for improved ingress protection.
- Corrosion-resistant gray painted aluminum.
- Supplied with energy efficient electronic driver on a removable gear tray.
- Supplied with external and internal ground/earth connection.
- Fixture supplied with one M20 blanking plug.
- Easy connection to wire and disconnect with plug-in terminal blocks.

Standard Materials

- End caps and cover: aluminum.
- Glass tube: tempered borosilicate glass.
- O-ring gasket: Nitrile (NBR).
- Internal reflector: white powder coated galvanized steel (400 lm version) or aluminium (2400/4725 lm versions).
- Mounting accessories: several accessories in different material such as zinc plated steel, galvanized steel or 316 stainless steel.

Options

- Diffused polycarbonate lens (2400/4725 lm versions only)
- Ta -50 °C IP66 (without gasket)
- Ta -40 °C IP66/68 (with EPDM70)

Certifications and Compliances

◆ ATEX/IECEX Certification

- **Certification Type: FDLED**
 - Gas: Zone 1 and 2:
 - Conforming to ATEX 94/9/CE: Ⓢ II 2 G
 - Type of Protection:
 - Ex d IIB (4725 lm version)
 - Ex d IIB+H₂ (2400 lm version)
 - Ex d IIC (400 lm version)
 - Temperature Class: T6
 - Dust: Zone 21 and 22:
 - Conforming to ATEX 94/9/CE: Ⓢ II 2 D
 - Type of Protection: Ex tb IIIC
 - Surface Temperature:
 - +75 °C (400 lm version)
 - +80 °C (2400 and 4725 lm version)
 - Ambient Temperature: -30 °C to 60 °C
 - CE Declaration of Conformity: 50312
 - ATEX Certificate: INERIS 15 ATEX 0042X



4725 lm (IIB)



2400 lm (IIB+H2)



400 lm (IIC)

- IECEx Certificate: IECEx INE 15.0046X
- Index of Protection according EN/IEC 60529: IP66/68
- Impact Resistance (shock):
 - IK09 (400 and 2400 lm version)
 - IK08 (4725 lm version)
- Internal Volume: > 2 dm³ - 2 liters

◆ EURASEC Certification

- Not yet available (around Mid-2016)

◆ Others Certification

- Not yet available (around Mid-2016)

FDLED Series Luminaires

Flameproof

Zones 1 and 2 - 21 and 22
Gas (G) and Dust (D)

Catalog Numbering Guide – FD LED Series Luminaires

FDLED
Series: FDLED
Zone 1 and 2 -
21 and 22
ATEX/IECEx Certified

04
LED Power (lm):
04 - 400 lm
25 - 2400 lm
50 - 4725 lm

AD
Voltage :
AD - 48/110/220V DC
230V - 50Hz AC ①
BU - 110V to 254V,
50/60 Hz ②

1
Cable Entry:
1 - NPT 3/4"
2 - Metric M20
3 - Metric M25

X
Options:
(Options must be
listed alphabetically)
D - Diffused
Polycarbonate Lens ②

Technical Data

Lumen Output	Type	P	Ie	Gas group	Ambient Temperature °C	Class of Temperature	Surface Temperature
400 lm	LED	6 W	0.03 A	IIC	-30 °C to + 60°C	T6	75 °C
2400 lm	LED	23 W	0.21 A	IIB+H2	-30 °C to + 60°C	T6	80 °C
4725 lm	LED	46 W	0.42 A	IIB	-30 °C to + 60°C	T6	80 °C

Led Power (lm)	Voltage	Cable Entry	Weight kg	Volume dm ³	Catalog Number
400 lm	48/110/220V DC 230V - 50Hz AC	M20	7.8	36.0	FDLED04AD2
2400 lm	110V to 254V, 50/60 Hz	M20	8.1	37.1	FDLED25BU2
4725 lm	110V to 254V, 50/60 Hz	M20	9.0	58.0	FDLED50BU2

① Only 400 lm version
② Only 2400 and 4725 lm version


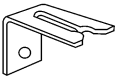
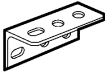

Shaded catalog numbers are normally stocked items. All other items are made to order.

FDLED Series Luminaires

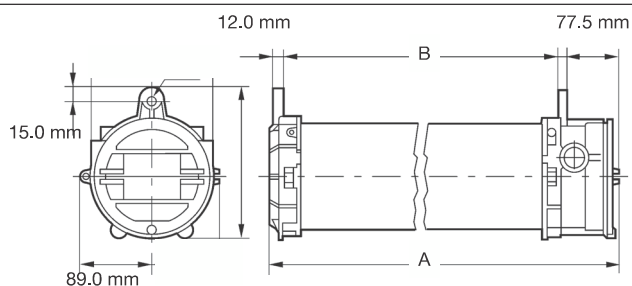
Flameproof

Zones 1 and 2 - 21 and 22
Gas (G) and Dust (D)

Accessories and Replacement Parts

Description	Catalog Number
Protective Guard – Zinc Plated Steel	
 Model 0.3 (for 400 lm)	FDPG1Z
Model 0,4 (for 2400 lm)	FDPG5Z
Model 0.6 (for 4725 lm)	FDPG2Z
Fixing Brackets for Ease of Surface Installation – Set of Two	
 Zinc plated steel	FDFBZ
316 stainless steel	FDFBS
Surface Mounting Brackets – Set of Two	
 Zinc plated steel	FDSBZ
316 stainless steel	FDSBS
Half Clamp Brackets for Pole Mounting – Set of Two	
 For 42 mm to 49 mm pole (1-1/4 to 1-1/2" tube)	
Zinc plated steel	FDHC49Z
316 stainless steel	FDHC49S
For 60 mm pole (2" tube)	
Zinc plated steel	FDHC60Z
316 stainless steel	FDHC60S
Fall Prevention Kit	
1.20 meter stainless steel chain	FDSCS

Dimensions in Millimeters



Model	A	B
0.3 (400 lm)	430	335
0,4 (2400 lm)	470	375
0.6 (4725 lm)	745	650

Shaded catalog numbers are normally stocked items. All other items are made to order.