

# TE1FU Series Stainless Steel Cable Glands

## For All Types of Armored Cables

Increased Safety, Flameproof, Restricted Breathing and Dust Environment

Zone 1 and 2, Zone 20  
Gas (G) and Dust (D)

### Applications

- Cable gland certified for enclosures with the following protection modes:
  - Ex d flameproof IIB or IIC.
  - Ex e increased safety
  - Ex nR restricted breathing
  - D dust environment
- Hazardous areas (gas and dust).
- Onshore and offshore.

### Features

- Provides a flameproof (Type "d") seal on the cable inner bedding.
- Provides a gas tight seal permitting the compatibility of use with restricted breathing (Type "nR") equipment.
- Allows mechanical cable retention and earth continuity via the cable armor termination.
- Separate tightening actions for the inner
- The inner displacement seal and armor terminations are separate tightening actions providing maximum control over the pressure applied to the cable bedding.

- Reversible armor cone and AnyWay clamping ring arrangement facilitates remote make off and enables the cable to be disconnected from the equipment.
- Environmental/load retention seal is provided on the cable outer sheath.
- Stepped cone is suitable for SWA cables. Grooved cone is suitable for all other approved armored cables.
- Sealing Technique : Inner Displacement Seal and LRS (load retention seal) outer seal.

### Standard Materials

- Body: Stainless Steel.
- Seal: LSF (Low Smoke Fume) Halogen Free thermoset elastomer.

### Options

- Aluminum: replace last digit **5** with **1**
- Shroud, locknut, earth tag, entry thread seal, serrated washers, adaptors and reducers: see *Cable Gland Accessories* pages.

| Cable Gland Size | Metric Thread C | Standard Metric ① | Catalog Numbers       |                |                       |                       | Minimum Thread Length mm E | Cable Gland Weight kgs |
|------------------|-----------------|-------------------|-----------------------|----------------|-----------------------|-----------------------|----------------------------|------------------------|
|                  |                 |                   | Standard NPT Thread C | Standard NPT ① | Optional NPT Thread C | Optional NPT Thread ① |                            |                        |
| 20S/16           | M20             | 2016TE1FU4        | 1/2"                  | 2016TE1FU0504  | 3/4"                  | 2016TE1FU0754         | 15.0                       | 0.15                   |
| 20S              | M20             | 20STE1FU4         | 1/2"                  | 20STE1FU0504   | 3/4"                  | 20STE1FU0754          | 15.0                       | 0.15                   |
| 20               | M20             | 20TE1FU4          | 1/2"                  | 20TE1FU0504    | 3/4"                  | 20TE1FU0754           | 15.0                       | 0.23                   |
| 25S              | M25             | 25STE1FU4         | 3/4"                  | 25STE1FU0754   | 1"                    | 25STE1FU1004          | 15.0                       | 0.34                   |
| 25               | M25             | 25TE1FU4          | 3/4"                  | 25TE1FU0754    | 1"                    | 25TE1FU1004           | 15.0                       | 0.34                   |
| 32               | M32             | 32TE1FU4          | 1"                    | 32TE1FU1004    | 1-1/4"                | 32TE1FU1254           | 15.0                       | 0.55                   |
| 40               | M40             | 40TE1FU4          | 1-1/4"                | 40TE1FU1254    | 1-1/2"                | 40TE1FU1504           | 15.0                       | 0.79                   |
| 50S              | M50             | 50STE1FU4         | 1-1/2"                | 50STE1FU1504   | 2"                    | 50STE1FU2004          | 15.0                       | 1.00                   |
| 50               | M50             | 50TE1FU4          | 2"                    | 50TE1FU2004    | 2-1/2"                | 50TE1FU2504           | 15.0                       | 1.37                   |
| 63S              | M63             | 63STE1FU4         | 2"                    | 63STE1FU2004   | 2-1/2"                | 63STE1FU2504          | 15.0                       | 1.50                   |
| 63               | M63             | 63TE1FU4          | 2-1/2"                | 63TE1FU2504    | 3"                    | 63TE1FU3004           | 15.0                       | 1.56                   |
| 75S              | M75             | 75STE1FU4         | 2-1/2"                | 75STE1FU2504   | 3"                    | 75STE1FU3004          | 15.0                       | 2.45                   |
| 75               | M75             | 75TE1FU4          | 3"                    | 75TE1FU3004    | 3-1/2"                | 75TE1FU3504           | 15.0                       | 3.15                   |
| 90               | M90             | 90TE1FU4          | 3-1/2"                | 90TE1FU3504    | 4"                    | 90TE1FU4004           | 24.0                       | 4.62                   |
| 100              | M100            | 100TE1FU4         | 4"                    | 100TE1FU4004   | 5"                    | 100TE1FU5004          | 24.0                       | 4.95                   |
| 115              | M115            | 115TE1FU4         | 4"                    | 115TE1FU4004   | 5"                    | 115TE1FU5004          | 24.0                       | 7.60                   |
| 130              | M130            | 130TE1FU4         | 5"                    | 130TE1FU5004   | 6"                    | 130TE1FU6004          | 24.0                       | 8.73                   |

① Entry thread seal not supplied, see *Cable Gland Accessories and Tools*.

# TE1FU Series Stainless Steel Cable Glands

## For All Types of Armored Cables

Increased Safety, Flameproof, Restricted Breathing and Dust Environment

Zone 1 and 2, Zone 20  
Gas (G) and Dust (D)

### ATEX/IECEX Certifications and Compliances

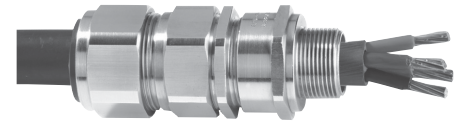
- **Certification Type TE1FU**
  - Gas: Zones 1 and 2
  - Type of Protection: Ex d IIC Gb, Ex e IIC Gb, Ex nR IIC Gc
  - Dust: Zone 20
  - Type of Protection: Ex ta IIIC Da
  - Conforming to ATEX 94/9/CE: Ⓜ II 2G 3G 1D
  - Ambient Temperature: -60 °C to +130 °C
  - CE Declaration of Conformity: DC07001
  - ATEX Certificate: Sira 13ATEX1073X, Sira 13ATEX4079X
  - IECEx Certificate: IECEx SIR 13.0028X, IECEx SIM 14.0007X
  - Other Certifications: LLOYDS, DNV, ABS
  - Index of Protection according EN/IEC 60529: IP66, IP67, IP68
  - Deluge Protection Compliance: DTS01:91

### INMETRO Certification

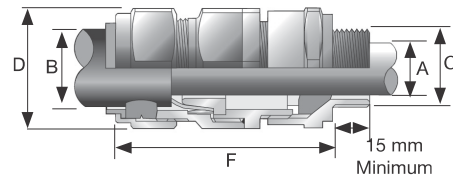
- INMETRO Certificate: TÜV 11.0374-X

### EURASEC Certification

- EURASEC TC RU C-GB.Г505.B.00138



Dimensions in Millimeters



| Cable Gland Size | Cable Bedding Diameter mm A |       | Overall Cable Diameter mm B |       | Across Flats mm D | Across Corners mm D | Protrusion Length mm F | PVC Shroud Reference |
|------------------|-----------------------------|-------|-----------------------------|-------|-------------------|---------------------|------------------------|----------------------|
|                  | Min                         | Max   | Min                         | Max   |                   |                     |                        |                      |
| 20S/16           | 3.1                         | 8.6   | 6.1                         | 13.1  | 24.0              | 26.4                | 57.3                   | PVC04                |
| 20S              | 6.1                         | 11.6  | 9.5                         | 15.9  | 24.0              | 26.4                | 57.3                   | PVC04                |
| 20               | 6.5                         | 13.9  | 12.5                        | 20.9  | 30.5              | 33.6                | 61.2                   | PVC06                |
| 25S              | 11.1                        | 19.9  | 14.0                        | 22.0  | 37.5              | 41.3                | 74.0                   | PVC09                |
| 25               | 11.1                        | 19.9  | 18.2                        | 26.2  | 37.5              | 41.3                | 74.0                   | PVC09                |
| 32               | 17.0                        | 26.2  | 23.7                        | 33.9  | 46.0              | 50.6                | 78.2                   | PVC11                |
| 40               | 22.0                        | 32.1  | 27.9                        | 40.4  | 55.0              | 60.5                | 81.6                   | PVC15                |
| 50S              | 29.5                        | 38.1  | 35.2                        | 46.7  | 60.0              | 66.0                | 88.1                   | PVC18                |
| 50               | 35.6                        | 44.0  | 40.4                        | 53.0  | 70.1              | 77.1                | 91.2                   | PVC21                |
| 63S              | 40.1                        | 49.9  | 45.6                        | 59.4  | 75.0              | 82.4                | 90.5                   | PVC23                |
| 63               | 47.2                        | 55.9  | 54.6                        | 65.8  | 80.0              | 88.0                | 90.3                   | PVC25                |
| 75S              | 52.8                        | 61.9  | 59.0                        | 72.0  | 90.0              | 99.0                | 104.7                  | PVC28                |
| 75               | 59.1                        | 67.9  | 66.7                        | 78.4  | 100.0             | 110.0               | 110.8                  | PVC30                |
| 90               | 66.6                        | 78.6  | 76.2                        | 90.3  | 115.0             | 126.5               | 135.5                  | PVC32                |
| 100              | 76.0                        | 90.9  | 86.1                        | 101.4 | 127.0             | 139.7               | 126.8                  | LSF33                |
| 115              | 86.0                        | 97.9  | 101.5                       | 110.2 | 138.0             | 151.8               | 157.5                  | LSF34                |
| 130              | 97.0                        | 114.9 | 110.2                       | 123.2 | 157.0             | 172.7               | 164.5                  | LSF35                |

ZONE 1 RATED STAINLESS STEEL CABLE GLANDS

Fittings