

PX2K Series Compound Barrier Seal Cable Glands

For all Types of Armored cables

Increased Safety, Flameproof, Restricted Breathing and Dust Environment

Zone 1 and 2, Zone 20
Gas (G) and Dust (D)

Applications:

- Cable gland for all types of armored cables (braid, tape, wire and lead sheath version) certified for enclosures with the following protection modes:
 - Ex d flameproof IIB or IIC.
 - Ex e increased safety.
 - Ex nR restricted breathing.
 - D dust environment.
- Hazardous areas (gas and dust).
- Onshore and offshore.

Features

- Cable gland with compound barrier seal for use in hazardous areas with all types of armored cables (braid, tape and wire).
- The cable gland provides mechanical cable retention and earth continuity via cable armor termination.
- A combined detachable armor cone and compound tube, together with AnyWay universal clamping ring arrangement allows the cable to be easily disconnected from the equipment.
- The cable gland is IP66/68 and complies with deluge protection tests.
- The cable gland is supplied with epoxy resin and two detachable armor cones.
- Sealing technique: LRS outer seal (load retention seal).

Standard Materials

- Body: nickel plated brass
- Epoxy resin barrier compound
- Seal: LSF (Low Smoke Fume) Halogen Free thermoset elastomer.

Options

- 316L stainless steel version: replace last digit **5** with **4**
- Lead sheath version: Replace **PX2K** with **PX2KPB**
- Aluminum: replace last digit **5** with **1**
- Shroud, locknut, earth tag, entry thread seal, serrated washers, adaptors and reducers: see *Cable Gland Accessories* pages.

ZONE 1 RATED NICKEL PLATED BRASS CABLE GLANDS

Fittings

Cable Gland Size	Metric Thread C	Catalog Numbers					Maximum Cable Bedding Diameter mm G	Minimum Thread Length mm E
		Standard Metric ①	Standard NPT Thread C	Standard NPT ①	Optional NPT Thread C	Optional NPT Thread ①		
20S16	M20	2016PX2K5	1/2"	2016PX2K0505	3/4"	2016PX2K0755	11.7	15.0
20S	M20	20SPX2K5	1/2"	20SPX2K0505	3/4"	20SPX2K0755	11.7	15.0
20	M20	20PX2K5	1/2"	20PX2K0505	3/4"	20PX2K0755	12.9	15.0
25S	M25	25SPX2K5	3/4"	25SPX2K0755	1"	25SPX2K1005	17.9	15.0
25	M25	25PX2K5	3/4"	25PX2K0755	1"	25PX2K1005	17.9	15.0
32	M32	32PX2K5	1"	32PX2K1005	1-1/4"	32PX2K1255	23.9	15.0
40	M40	40PX2K5	1-1/4"	40PX2K1255	1-1/2"	40PX2K1505	30.3	15.0
50S	M50	50SPX2K5	1-1/2"	50SPX2K1505	2"	50SPX2K2005	36.9	15.0
50	M50	50PX2K5	2"	50PX2K2005	2-1/2"	50PX2K2505	41.3	15.0
63S	M63	63SPX2K5	2"	63SPX2K2005	2-1/2"	63SPX2K2505	48.4	15.0
63	M63	63PX2K5	2-1/2"	63PX2K2505	3"	63PX2K3005	54.0	15.0
75S	M75	75SPX2K5	2-1/2"	75SPX2K2505	3"	75SPX2K3005	60.2	15.0
75	M75	75PX2K5	3"	75PX2K3005	3-1/2"	75PX2K3505	64.2	15.0
90	M90	90PX2K5	3-1/2"	90PX2K3505	4"	90PX2K4005	75.6	24.0
100	M100	100PX2K5	4"	100PX2K4005	5"	100PX2K5005	85.9	24.0

① Entry thread seal not supplied, see *Cable Gland Accessories and Tools*.

PX2K Series Compound Barrier Seal Cable Glands

For all Types of Armored cables

Increased Safety, Flameproof, Restricted Breathing and Dust Environment

Zone 1 and 2, Zone 20
Gas (G) and Dust (D)

ATEX/IECEX Certifications and Compliances

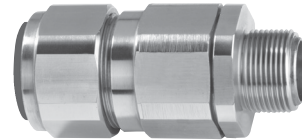
- **Certification Type PX2K**
 - Gas: Zones 1 and 2
 - Type of Protection: Ex d IIC Gb, Ex e IIC Gb, Ex nR IIC Gc
 - Dust: Zone 20
 - Type of Protection: Ex ta IIIC Da
 - Conforming to ATEX 94/9/CE: Ⓜ II 2G 3G 1D
 - Ambient Temperature: -60 °C to +85 °C
 - CE Declaration of Conformity: DC07001
 - ATEX Certificate: Sira 13ATEX1072X, Sira 13ATEX4078X
 - IECEx Certificate: IECEx SIR 13.0027X, IECEx SIM 14.0008X
 - Other Certifications: cCSAus, UL, KCC, CCOE/PESO (india)
 - Marine Approval: LLOYDS, DNV, ABS
 - Index of Protection according EN/IEC 60529: IP66, IP67, IP68
 - Deluge Protection Compliance: DTS01:91

INMETRO Certification

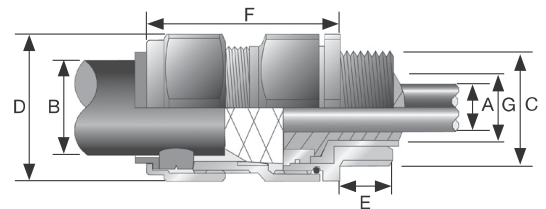
- INMETRO Certificate: TUV 12.2073X

EURASEC Certification

- TC RU C-GB.ГБ.05.В.00138



Dimensions in Millimeters



Cable Gland Size	Maximum Diameter Over Conductors mm A	Maximum Number of Cores	Overall Cable Diameter mm B		Across Flats mm D	Across Corners mm D	Protrusion Length mm F	Cable Gland Weight kg
			Min	Max				
20S16	11.7	11	6.1	13.1	30.5	33.6	62.0	0.24
20S	11.7	11	9.5	15.9	30.5	33.6	62.0	0.23
20	12.6	11	12.5	20.9	30.5	33.6	63.0	0.24
25S	17.5	21	14.0	22.0	37.5	41.3	69.5	0.37
25	17.5	21	18.2	26.2	37.5	41.3	69.5	0.37
32	23.6	38	23.7	33.9	46.0	50.6	75.0	0.57
40	30.0	59	27.9	40.4	55.0	60.5	75.0	0.80
50S	36.6	89	35.2	46.7	60.0	66.0	77.0	0.90
50	41.0	89	40.4	53.0	70.0	77.0	77.0	1.19
63S	47.9	115	45.6	59.4	75.0	82.5	79.7	1.39
63	53.7	115	54.6	65.8	80.0	88.0	80.3	1.41
75S	59.9	140	59.0	72.0	90.0	99.0	86.8	2.09
75	64.2	140	66.7	78.4	100.0	110.0	88.3	2.54
90	75.3	200	76.2	90.3	115.0	126.5	102.1	3.71
100	85.6	200	86.1	101.4	127.0	139.7	114.0	4.31

ZONE 1 RATED NICKEL PLATED BRASS CABLE GLANDS

Fittings