

# PX (PXSS2K) Series Compound Barrier Type Cable Glands

## For Unarmored Cables

Increased Safety, Flameproof, Restricted Breathing and Dust Environment

Zone 1 and 2, Zone 20  
Gas (G) and Dust (D)

### Applications

- Cable gland for all types of armored cable certified for enclosures with the following protection modes:
  - Ex d flameproof IIB or IIC (as per §10.4.2 of IEC 60079-14)
  - Ex e increased safety.
  - Ex nR restricted breathing.
  - Ex d flameproof.
- Hazardous areas (gas and dust).
- Onshore and offshore.

### Features

- Connector provides an environmental seal on the cable jacket and an explosionproof compound barrier seal around the cable inner cores.
- The connector is UL Listed for NPT or Metric entry threads.
- Continuous operating temperature -60 °C to +85 °C.
- Sealing technique: displacement seal concept.
- Sealing area(s): inner compound barrier and outer sheath.

### Standard Materials

- Connector: brass fully nickel plated.
- Seal: LSF (Low Smoke Fume) Halogen Free thermoset elastomer.
- Epoxy putty.

### Options

- Aluminum: replace last digit suffix **5** with **1**
- 316L stainless steel: replace last digit suffix **5** with **4**
- Shroud, locknut, earth tag, entry thread seal, serrated washers, adaptors and reducers: see *Cable Gland Accessories* pages.

| Cable Gland Size | Metric Thread C | Catalog Numbers   |                       |                   |                       |                       | Minimum Thread Length mm E | Maximum Number of Cores |
|------------------|-----------------|-------------------|-----------------------|-------------------|-----------------------|-----------------------|----------------------------|-------------------------|
|                  |                 | Standard Metric ① | Standard NPT Thread C | Standard NPT ①    | Optional NPT Thread C | Optional NPT Thread ① |                            |                         |
| 20S16            | M20             | <b>2016PX5</b>    | 1/2"                  | <b>2016PX0505</b> | 3/4"                  | <b>2016PX0755</b>     | 15.0                       | 11                      |
| 20S              | M20             | <b>20SPX5</b>     | 1/2"                  | <b>20SPX0505</b>  | 3/4"                  | <b>20SPX0755</b>      | 15.0                       | 11                      |
| 20               | M20             | <b>20PX5</b>      | 1/2"                  | <b>20PX0505</b>   | 3/4"                  | <b>20PX0755</b>       | 15.0                       | 11                      |
| 25               | M25             | <b>25PX5</b>      | 3/4"                  | <b>25PX0755</b>   | 1"                    | <b>25PX1005</b>       | 15.0                       | 21                      |
| 32               | M32             | <b>32PX5</b>      | 1"                    | <b>32PX1005</b>   | 1-1/4"                | <b>32PX1255</b>       | 15.0                       | 38                      |
| 40               | M40             | <b>40PX5</b>      | 1-1/4"                | <b>40PX1255</b>   | 1-1/2"                | <b>40PX1505</b>       | 15.0                       | 59                      |
| 50S              | M50             | <b>50SPX5</b>     | 1-1/2"                | <b>50SPX1505</b>  | 2"                    | <b>50SPX2005</b>      | 15.0                       | 89                      |
| 50               | M50             | <b>50PX5</b>      | 2"                    | <b>50PX2005</b>   | 2-1/2"                | <b>50PX2505</b>       | 15.0                       | 89                      |
| 63S              | M63             | <b>63SPX5</b>     | 2"                    | <b>63SPX2005</b>  | 2-1/2"                | <b>63SPX2505</b>      | 15.0                       | 115                     |
| 63               | M63             | <b>63PX5</b>      | 2-1/2"                | <b>63PX2505</b>   | 3"                    | <b>63PX3005</b>       | 15.0                       | 115                     |
| 75S              | M75             | <b>75SPX5</b>     | 2-1/2"                | <b>75SPX2505</b>  | 3"                    | <b>75SPX3005</b>      | 15.0                       | 140                     |
| 75               | M75             | <b>75PX5</b>      | 3"                    | <b>75PX3005</b>   | 3-1/2"                | <b>75PX3505</b>       | 15.0                       | 140                     |
| 90               | M90             | <b>90PX5</b>      | 3-1/2"                | <b>90PX3505</b>   | 4"                    | <b>90PX4005</b>       | 24.0                       | 200                     |
| 100              | M100            | <b>100PX5</b>     | 4"                    | <b>100PX4005</b>  | 5"                    | <b>100PX5005</b>      | 24.0                       | 200                     |

① Entry thread seal not supplied, see *Cable Gland Accessories and Tools*.

Shaded catalog numbers are normally stocked items. All other items are made to order.

# PX (PXSS2K) Series Compound Barrier Type Cable Glands

## For Unarmored Cables

Increased Safety, Flameproof, Restricted Breathing and Dust Environment

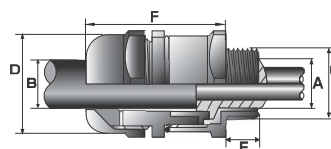
Zone 1 and 2, Zone 20  
Gas (G) and Dust (D)

### ATEX/IECEX Certifications and Compliances

- **Certification Type PXSS2K**
  - Gas: Zones 1 and 2
    - Type of Protection: Ex d IIC Gb, Ex e IIC Gb, Ex nR IIC Gc
  - Dust: Zone 20
    - Type of Protection: Ex ta IIIC Da
  - Conforming to ATEX 94/9/CE: Ⓜ II 2G 3G 1D
  - Ambient Temperature: -60 °C to +85 °C
  - CE Declaration of Conformity: DC07001
  - ATEX Certificate: Sira 13ATEX10712X, Sira 13ATEX4078X
  - IECEX Certificate: IECEX SIR 13.0027X, IECEX SIM 14.0008X
  - Other Certifications: cCSAus, UL, KCC, CCOE/PESO (india)
  - Marine Approval: LLOYDS, DNV, ABS
  - Index of Protection according EN/IEC 60529: IP66, IP67, IP68
  - Deluge Protection Compliance: DTS01:91



Dimensions in Millimeters



### INMETRO Certification

- INMETRO Certificate: TUV 12.2073X

### EURASEC Certification

- TC RU C-GB.ГБ.05.В.00138

| Cable Gland Size | Maximum Diameter Over Conductors mm A | Overall Cable Diameter mm B |      | Across Flats mm D | Across Corners mm D | Protrusion Length mm F | PVC Shroud Reference | Cable Gland Weight kg |
|------------------|---------------------------------------|-----------------------------|------|-------------------|---------------------|------------------------|----------------------|-----------------------|
|                  |                                       | Min                         | Max  |                   |                     |                        |                      |                       |
| 20S16            | 8.6                                   | 3.1                         | 8.6  | 30.0              | 33.0                | 53.1                   | PVC06                | 0.20                  |
| 20S              | 11.7                                  | 6.1                         | 11.7 | 30.0              | 33.0                | 53.1                   | PVC06                | 0.20                  |
| 20               | 12.6                                  | 6.5                         | 14.0 | 30.0              | 33.0                | 54.2                   | PVC06                | 0.20                  |
| 25               | 17.5                                  | 11.1                        | 20.0 | 36.0              | 39.6                | 60.0                   | PVC09                | 0.33                  |
| 32               | 23.6                                  | 17.0                        | 26.3 | 41.0              | 45.1                | 61.1                   | PVC10                | 0.39                  |
| 40               | 30.0                                  | 22.0                        | 32.1 | 50.0              | 55.0                | 62.4                   | PVC13                | 0.56                  |
| 50S              | 36.6                                  | 29.5                        | 38.2 | 55.0              | 60.5                | 65.2                   | PVC15                | 0.66                  |
| 50               | 41.0                                  | 35.6                        | 44.0 | 60.0              | 66.0                | 67.6                   | PVC18                | 0.73                  |
| 63S              | 47.9                                  | 40.1                        | 49.9 | 70.1              | 77.1                | 71.1                   | PVC21                | 1.07                  |
| 63               | 53.7                                  | 47.2                        | 55.9 | 75.0              | 82.5                | 70.4                   | PVC23                | 1.06                  |
| 75S              | 59.9                                  | 52.8                        | 61.9 | 80.0              | 88.0                | 75.3                   | PVC25                | 1.30                  |
| 75               | 64.3                                  | 59.1                        | 67.9 | 85.0              | 93.5                | 74.9                   | PVC27                | 1.30                  |
| 90               | 75.3                                  | 66.6                        | 79.4 | 108.0             | 118.8               | 94.8                   | PVC31                | 3.02                  |
| 100              | 85.6                                  | 76.0                        | 90.9 | 123.0             | 135.3               | 86.3                   | LSF33                | 4.00                  |

ZONE 1 RATED NICKEL PLATED BRASS CABLE GLANDS

Fittings

# PXSS2K-REX Series Liquid Resin Barrier Type Cable Glands

## For Unarmored Cables

Increased Safety, Flameproof, Restricted Breathing and Dust Environment

Zone 1 and 2, Zone 20  
Gas (G) and Dust (D)

### Applications

- Cable gland for all types of armored cable certified for enclosures with the following protection modes:
  - Ex d flameproof IIB or IIC.
  - Ex e increased safety.
  - Ex nR restricted breathing.
  - Ex d flameproof.
- Hazardous areas (gas and dust).
- Onshore and offshore.

### Features

- Utilizes RapidEx high speed liquid resin sealing compound included with each gland.
- The gland utilizes a liquid pour resin seal that vastly reduces installation time and associated costs. This solution is particularly effective on multicore cables where traditional compound is difficult and time consuming to apply.
- Connector provides an environmental seal on the cable jacket and an explosionproof liquid resin barrier seal around the cable inner cores.

- Continuous operating temperature -60 °C to +85 °C
- Sealing technique - displacement seal concept. Sealing area(s) - inner liquid resin barrier and outer sheath.
- Sealing technique: LRS outer seal (load retention seal).
- Sealing area(s): inner liquid resin barrier and outer sheath.

### Standard Materials

- Connector: brass fully nickel plated.
- Seal: LSF (Low Smoke Fume) Halogen Free thermoset elastomer.
- High speed liquid resin sealing compound.

### Options

- Aluminum: replace last digit **5** with **1**
- 316L stainless steel: replace last digit **5** with **4** (available by quote only)
- Shroud, locknut, earth tag, entry thread seal, serrated washers, adaptors and reducers: see *Cable Gland Accessories* pages

| Cable Gland Size | Metric Thread C | Standard Metric ① | Standard NPT Thread C | Standard NPT ① | Optional NPT Thread C | Optional NPT ① | Replacement Sealing Resin | Maximum Diameter Over Conductors mm A |
|------------------|-----------------|-------------------|-----------------------|----------------|-----------------------|----------------|---------------------------|---------------------------------------|
| 20S/16           | M20             | 2016PXREX5        | 1/2"                  | 2016PXREX0505  | 3/4"                  | 2016PXREX0755  | RAPIDEX30                 | 8.6                                   |
| 20S              | M20             | 20SPXREX5         | 1/2"                  | 20SPXREX0505   | 3/4"                  | 20SPXREX0755   | RAPIDEX30                 | 11.7                                  |
| 20               | M20             | 20PXREX5          | 1/2"                  | 20PXREX0505    | 3/4"                  | 20PXREX0755    | RAPIDEX30                 | 12.6                                  |
| 25               | M25             | 25PXREX5          | 3/4"                  | 25PXREX0755    | 1"                    | 25PXREX1005    | RAPIDEX30                 | 17.5                                  |
| 32               | M32             | 32PXREX5          | 1"                    | 32PXREX1005    | 1-1/4"                | 32PXREX1255    | RAPIDEX30                 | 23.6                                  |
| 40               | M40             | 40PXREX5          | 1-1/4"                | 40PXREX1255    | 1-1/2"                | 40PXREX1505    | RAPIDEX30                 | 30.0                                  |
| 50S              | M50             | 50SPXREX5         | 1-1/2"                | 50SPXREX1505   | 2"                    | 50SPXREX2005   | RAPIDEX80                 | 36.6                                  |
| 50               | M50             | 50PXREX5          | 2"                    | 50PXREX2005    | 2-1/2"                | 50PXREX2505    | RAPIDEX80                 | 41.0                                  |
| 63S              | M63             | 63SPXREX5         | 2"                    | 63SPXREX2005   | 2-1/2"                | 63SPXREX2505   | 2RAPIDEX80                | 47.9                                  |
| 63               | M63             | 63PXREX5          | 2-1/2"                | 63PXREX2505    | 3"                    | 63PXREX3005    | 3RAPIDEX80                | 53.7                                  |
| 75S              | M75             | 75SPXREX5         | 2-1/2"                | 75SPXREX2505   | 3"                    | 75SPXREX3005   | 3RAPIDEX80                | 59.9                                  |
| 75               | M75             | 75PXREX5          | 3"                    | 75PXREX3005    | 3-1/2"                | 75PXREX3505    | 3RAPIDEX80                | 64.3                                  |
| 90               | M90             | 90PXREX5          | 3-1/2"                | 90PXREX3505    | 4"                    | 90PXREX4005    | 3RAPIDEX80                | 75.3                                  |

① Entry thread seal not supplied, see *Cable Gland Accessories and Tools*.

# PXSS2K-REX Series Liquid Resin Barrier Type Cable Glands

## For Unarmored Cables

Increased Safety, Flameproof, Restricted Breathing and Dust Environment

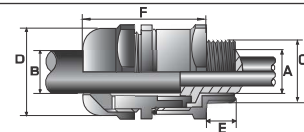
Zone 1 and 2, Zone 20  
Gas (G) and Dust (D)

### ATEX/IECEX Certifications and Compliances

- **Certification Type PXSS2K-REX**
  - Gas: Zones 1 and 2
    - Type of Protection: Ex d IIC Gb, Ex e IIC Gb, Ex nR IIC Gc
  - Dust: Zone 20
    - Type of Protection: Ex ta IIIC Da
  - Conforming to ATEX 94/9/CE: Ⓜ II 2G 3G 1D
  - Ambient Temperature: -60 °C to +85 °C
  - CE Declaration of Conformity: DC07001
  - ATEX Certificate: Sira 13ATEX1072X, Sira 13ATEX4078X
  - IECEX Certificate: IECEX SIR 13.0027X, IECEX SIM 14.0008X
  - Other Certifications: cCSAus, CCOE/PESO (india)
  - Marine Approval: LLOYDS, DNV, ABS
  - Index of Protection according EN/IEC 60529: IP66, IP67, IP68
  - Deluge Protection Compliance: DTS01:91



Dimensions in Millimeters



### INMETRO Certification

- INMETRO Certificate: TUV 12.2073X

### EURASEC Certification

- TC RU C-GB.ГБ.05.B.00138

| Cable Gland Size | Maximum Number of Cores | Maximum Cable Bedding Diameter mm G | Minimum Thread Length mm E | Cable Bedding Diameter mm B |      | Across Flats mm D | Across Corners mm D | Protrusion Length mm F | PVC Shroud Reference | Cable Gland Weight kg |
|------------------|-------------------------|-------------------------------------|----------------------------|-----------------------------|------|-------------------|---------------------|------------------------|----------------------|-----------------------|
|                  |                         |                                     |                            | Min                         | Max  |                   |                     |                        |                      |                       |
| 20S/16           | 11                      | 8.6                                 | 15.0                       | 3.1                         | 8.6  | 30.0              | 33.0                | 53.1                   | PVC06                | 0.20                  |
| 20S              | 11                      | 11.7                                | 15.0                       | 6.1                         | 11.7 | 30.0              | 33.0                | 53.1                   | PVC06                | 0.20                  |
| 20               | 11                      | 12.9                                | 15.0                       | 6.5                         | 14.0 | 30.0              | 33.0                | 54.2                   | PVC06                | 0.20                  |
| 25               | 21                      | 17.9                                | 15.0                       | 11.1                        | 20.0 | 36.0              | 39.6                | 60.0                   | PVC09                | 0.33                  |
| 32               | 38                      | 23.9                                | 15.0                       | 17.0                        | 26.3 | 41.0              | 45.1                | 61.1                   | PVC10                | 0.59                  |
| 40               | 59                      | 30.3                                | 15.0                       | 22.0                        | 32.1 | 50.0              | 55.0                | 62.4                   | PVC13                | 0.56                  |
| 50S              | 89                      | 36.9                                | 15.0                       | 29.5                        | 38.2 | 55.0              | 60.5                | 65.2                   | PVC15                | 0.66                  |
| 50               | 89                      | 41.3                                | 15.0                       | 35.6                        | 44.0 | 60.0              | 66.0                | 67.6                   | PVC18                | 0.73                  |
| 63S              | 115                     | 48.4                                | 15.0                       | 40.1                        | 49.9 | 70.0              | 77.0                | 71.1                   | PVC21                | 1.07                  |
| 63               | 115                     | 54.0                                | 15.0                       | 47.2                        | 55.9 | 75.0              | 82.5                | 70.4                   | PVC23                | 1.06                  |
| 75S              | 140                     | 60.2                                | 15.0                       | 52.8                        | 61.9 | 80.0              | 88.0                | 75.3                   | PVC25                | 1.30                  |
| 75               | 140                     | 64.2                                | 24.0                       | 59.1                        | 67.9 | 85.0              | 93.5                | 74.9                   | PVC27                | 1.30                  |
| 90               | 200                     | 75.6                                | 24.0                       | 66.6                        | 79.4 | 108.0             | 118.8               | 94.8                   | PVC31                | 3.02                  |

ZONE 1 RATED NICKEL PLATED BRASS CABLE GLANDS

Fittings

# PX2K Series Compound Barrier Seal Cable Glands

## For all Types of Armored cables

Increased Safety, Flameproof, Restricted Breathing and Dust Environment

Zone 1 and 2, Zone 20  
Gas (G) and Dust (D)

### Applications:

- Cable gland for all types of armored cables (braid, tape, wire and lead sheath version) certified for enclosures with the following protection modes:
  - Ex d flameproof IIB or IIC.
  - Ex e increased safety.
  - Ex nR restricted breathing.
  - D dust environment.
- Hazardous areas (gas and dust).
- Onshore and offshore.

### Features

- Cable gland with compound barrier seal for use in hazardous areas with all types of armored cables (braid, tape and wire).
- The cable gland provides mechanical cable retention and earth continuity via cable armor termination.
- A combined detachable armor cone and compound tube, together with AnyWay universal clamping ring arrangement allows the cable to be easily disconnected from the equipment.
- The cable gland is IP66/68 and complies with deluge protection tests.
- The cable gland is supplied with epoxy resin and two detachable armor cones.
- Sealing technique: LRS outer seal (load retention seal).

### Standard Materials

- Body: nickel plated brass
- Epoxy resin barrier compound
- Seal: LSF (Low Smoke Fume) Halogen Free thermoset elastomer.

### Options

- 316L stainless steel version: replace last digit **5** with **4**
- Lead sheath version: Replace **PX2K** with **PX2KPB**
- Aluminum: replace last digit **5** with **1**
- Shroud, locknut, earth tag, entry thread seal, serrated washers, adaptors and reducers: see *Cable Gland Accessories* pages.

ZONE 1 RATED NICKEL PLATED BRASS CABLE GLANDS

Fittings

| Cable Gland Size | Metric Thread C | Catalog Numbers   |                       |                |                       |                       | Maximum Cable Bedding Diameter mm G | Minimum Thread Length mm E |
|------------------|-----------------|-------------------|-----------------------|----------------|-----------------------|-----------------------|-------------------------------------|----------------------------|
|                  |                 | Standard Metric ① | Standard NPT Thread C | Standard NPT ① | Optional NPT Thread C | Optional NPT Thread ① |                                     |                            |
| 20S16            | M20             | 2016PX2K5         | 1/2"                  | 2016PX2K0505   | 3/4"                  | 2016PX2K0755          | 11.7                                | 15.0                       |
| 20S              | M20             | 20SPX2K5          | 1/2"                  | 20SPX2K0505    | 3/4"                  | 20SPX2K0755           | 11.7                                | 15.0                       |
| 20               | M20             | 20PX2K5           | 1/2"                  | 20PX2K0505     | 3/4"                  | 20PX2K0755            | 12.9                                | 15.0                       |
| 25S              | M25             | 25SPX2K5          | 3/4"                  | 25SPX2K0755    | 1"                    | 25SPX2K1005           | 17.9                                | 15.0                       |
| 25               | M25             | 25PX2K5           | 3/4"                  | 25PX2K0755     | 1"                    | 25PX2K1005            | 17.9                                | 15.0                       |
| 32               | M32             | 32PX2K5           | 1"                    | 32PX2K1005     | 1-1/4"                | 32PX2K1255            | 23.9                                | 15.0                       |
| 40               | M40             | 40PX2K5           | 1-1/4"                | 40PX2K1255     | 1-1/2"                | 40PX2K1505            | 30.3                                | 15.0                       |
| 50S              | M50             | 50SPX2K5          | 1-1/2"                | 50SPX2K1505    | 2"                    | 50SPX2K2005           | 36.9                                | 15.0                       |
| 50               | M50             | 50PX2K5           | 2"                    | 50PX2K2005     | 2-1/2"                | 50PX2K2505            | 41.3                                | 15.0                       |
| 63S              | M63             | 63SPX2K5          | 2"                    | 63SPX2K2005    | 2-1/2"                | 63SPX2K2505           | 48.4                                | 15.0                       |
| 63               | M63             | 63PX2K5           | 2-1/2"                | 63PX2K2505     | 3"                    | 63PX2K3005            | 54.0                                | 15.0                       |
| 75S              | M75             | 75SPX2K5          | 2-1/2"                | 75SPX2K2505    | 3"                    | 75SPX2K3005           | 60.2                                | 15.0                       |
| 75               | M75             | 75PX2K5           | 3"                    | 75PX2K3005     | 3-1/2"                | 75PX2K3505            | 64.2                                | 15.0                       |
| 90               | M90             | 90PX2K5           | 3-1/2"                | 90PX2K3505     | 4"                    | 90PX2K4005            | 75.6                                | 24.0                       |
| 100              | M100            | 100PX2K5          | 4"                    | 100PX2K4005    | 5"                    | 100PX2K5005           | 85.9                                | 24.0                       |

① Entry thread seal not supplied, see *Cable Gland Accessories and Tools*.

520



Visit our website at [www.appletonelec.com](http://www.appletonelec.com) or contact us at +33.3.22.54.27.54.

© March 2016

# PX2K Series Compound Barrier Seal Cable Glands

## For all Types of Armored cables

Increased Safety, Flameproof, Restricted Breathing and Dust Environment

Zone 1 and 2, Zone 20  
Gas (G) and Dust (D)

### ATEX/IECEX Certifications and Compliances

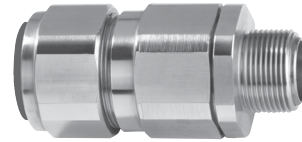
- **Certification Type PX2K**
  - Gas: Zones 1 and 2
    - Type of Protection: Ex d IIC Gb, Ex e IIC Gb, Ex nR IIC Gc
  - Dust: Zone 20
    - Type of Protection: Ex ta IIIC Da
  - Conforming to ATEX 94/9/CE: Ⓜ II 2G 3G 1D
  - Ambient Temperature: -60 °C to +85 °C
  - CE Declaration of Conformity: DC07001
  - ATEX Certificate: Sira 13ATEX1072X, Sira 13ATEX4078X
  - IECEx Certificate: IECEx SIR 13.0027X, IECEx SIM 14.0008X
  - Other Certifications: cCSAus, UL, KCC, CCOE/PESO (india)
  - Marine Approval: LLOYDS, DNV, ABS
  - Index of Protection according EN/IEC 60529: IP66, IP67, IP68
  - Deluge Protection Compliance: DTS01:91

### INMETRO Certification

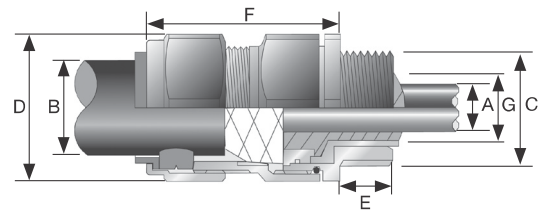
- INMETRO Certificate: TUV 12.2073X

### EURASEC Certification

- TC RU C-GB.ГБ.05.В.00138



Dimensions in Millimeters



| Cable Gland Size | Maximum Diameter Over Conductors mm A | Maximum Number of Cores | Overall Cable Diameter mm B |       | Across Flats mm D | Across Corners mm D | Protrusion Length mm F | Cable Gland Weight kg |
|------------------|---------------------------------------|-------------------------|-----------------------------|-------|-------------------|---------------------|------------------------|-----------------------|
|                  |                                       |                         | Min                         | Max   |                   |                     |                        |                       |
| 20S16            | 11.7                                  | 11                      | 6.1                         | 13.1  | 30.5              | 33.6                | 62.0                   | 0.24                  |
| 20S              | 11.7                                  | 11                      | 9.5                         | 15.9  | 30.5              | 33.6                | 62.0                   | 0.23                  |
| 20               | 12.6                                  | 11                      | 12.5                        | 20.9  | 30.5              | 33.6                | 63.0                   | 0.24                  |
| 25S              | 17.5                                  | 21                      | 14.0                        | 22.0  | 37.5              | 41.3                | 69.5                   | 0.37                  |
| 25               | 17.5                                  | 21                      | 18.2                        | 26.2  | 37.5              | 41.3                | 69.5                   | 0.37                  |
| 32               | 23.6                                  | 38                      | 23.7                        | 33.9  | 46.0              | 50.6                | 75.0                   | 0.57                  |
| 40               | 30.0                                  | 59                      | 27.9                        | 40.4  | 55.0              | 60.5                | 75.0                   | 0.80                  |
| 50S              | 36.6                                  | 89                      | 35.2                        | 46.7  | 60.0              | 66.0                | 77.0                   | 0.90                  |
| 50               | 41.0                                  | 89                      | 40.4                        | 53.0  | 70.0              | 77.0                | 77.0                   | 1.19                  |
| 63S              | 47.9                                  | 115                     | 45.6                        | 59.4  | 75.0              | 82.5                | 79.7                   | 1.39                  |
| 63               | 53.7                                  | 115                     | 54.6                        | 65.8  | 80.0              | 88.0                | 80.3                   | 1.41                  |
| 75S              | 59.9                                  | 140                     | 59.0                        | 72.0  | 90.0              | 99.0                | 86.8                   | 2.09                  |
| 75               | 64.2                                  | 140                     | 66.7                        | 78.4  | 100.0             | 110.0               | 88.3                   | 2.54                  |
| 90               | 75.3                                  | 200                     | 76.2                        | 90.3  | 115.0             | 126.5               | 102.1                  | 3.71                  |
| 100              | 85.6                                  | 200                     | 86.1                        | 101.4 | 127.0             | 139.7               | 114.0                  | 4.31                  |

ZONE 1 RATED NICKEL PLATED BRASS CABLE GLANDS

Fittings

# PX2K-REX Series Liquid Resin Barrier Type Cable Glands

## For all Types of Armored cables

Increased Safety, Flameproof, Restricted Breathing and Dust Environment

Zone 1 and 2, Zone 20  
Gas (G) and Dust (D)

### Applications

- Cable gland for all types of armored cables (braid, tape, wire and lead sheath version) certified for enclosures with the following protection modes:
  - Ex d flameproof IIB or IIC.
  - Ex e increased safety.
  - Ex nR restricted breathing.
  - D dust environment.
- Hazardous areas (gas and dust).
- Onshore and offshore.

### Features

- Utilizes RapidEx high speed liquid resin sealing compound included with each gland.
- The gland utilizes a liquid pour resin seal, that vastly reduces installation time and associated costs. This solution is particularly effective on multicore cables where traditional compound is difficult and time consuming to apply.
- Connector provides an environmental seal on the cable outer jacket and an explosionproof liquid resin barrier seal around the cable inner cores.

- Connector provides mechanical cable retention and electrical continuity via armor termination.
- PX2K forms part of a comprehensive connector range for marine shipboard and IEE45 armored and jacketed cables.
- Sealing technique: LRS outer seal (load retention seal).

### Standard Materials

- Connector: brass fully nickel plated.
- Seal: LSF (Low Smoke Fume) Halogen Free thermoset elastomer.
- High speed liquid resin sealing compound.

### Options

- Aluminum: replace last digit **5** with **1**
- 316L stainless steel: replace last digit **5** with **4** (available by quote only)
- Shroud, locknut, earth tag, entry thread seal, serrated washers, adaptors and reducers: see *Cable Gland Accessories* pages.

| Cable Gland Size | Metric Thread C | Thread Length (Metric) mm E | Catalog Numbers   |                       |                |                       |                |                           |
|------------------|-----------------|-----------------------------|-------------------|-----------------------|----------------|-----------------------|----------------|---------------------------|
|                  |                 |                             | Standard Metric ① | Standard NPT Thread C | Standard NPT ① | Optional NPT Thread C | Optional NPT ① | Replacement Sealing Resin |
| 20S/16           | M20             | 15.0                        | 2016PX2KREX5      | 1/2"                  | 2016PX2KRX505  | 3/4"                  | 2016PX2KRX755  | RAPIDEX30                 |
| 20S              | M20             | 15.0                        | 20SPX2KREX5       | 1/2"                  | 20SPX2KRX0505  | 3/4"                  | 20SPX2KRX0755  | RAPIDEX30                 |
| 20               | M20             | 15.0                        | 20PX2KREX5        | 1/2"                  | 20PX2KREX0505  | 3/4"                  | 20PX2KREX0755  | RAPIDEX30                 |
| 25S              | M25             | 15.0                        | 25SPX2KREX5       | 3/4"                  | 25SPX2KRX0755  | 1"                    | 25SPX2KRX1005  | RAPIDEX30                 |
| 25               | M25             | 15.0                        | 25PX2KREX5        | 3/4"                  | 25PX2KREX0755  | 1"                    | 25PX2KREX1005  | RAPIDEX30                 |
| 32               | M32             | 15.0                        | 32PX2KREX5        | 1"                    | 32PX2KREX1005  | 1-1/4"                | 32PX2KREX1255  | RAPIDEX30                 |
| 40               | M40             | 15.0                        | 40PX2KREX5        | 1-1/4"                | 40PX2KREX1255  | 1-1/2"                | 40PX2KREX1505  | RAPIDEX30                 |
| 50S              | M50             | 15.0                        | 50SPX2KREX5       | 1-1/2"                | 50SPX2KRX1505  | 2"                    | 50SPX2KRX2005  | RAPIDEX80                 |
| 50               | M50             | 15.0                        | 50PX2KREX5        | 2"                    | 50PX2KREX2005  | 2-1/2"                | 50PX2KREX2505  | RAPIDEX80                 |
| 63S              | M63             | 15.0                        | 63SPX2KREX5       | 2"                    | 63SPX2KRX2005  | 2-1/2"                | 63SPX2KRX2505  | 2RAPIDEX80                |
| 63               | M63             | 15.0                        | 63PX2KREX5        | 2-1/2"                | 63PX2KREX2505  | 3"                    | 63PX2KREX3005  | 2RAPIDEX80                |
| 75S              | M75             | 15.0                        | 75SPX2KREX5       | 2-1/2"                | 75SPX2KRX2505  | 3"                    | 75SPX2KRX3005  | 2RAPIDEX80                |
| 75               | M75             | 15.0                        | 75PX2KREX5        | 3"                    | 75PX2KREX3005  | 3-1/2"                | 75PX2KREX3505  | 3RAPIDEX80                |
| 90               | M90             | 20.0                        | 90PX2KREX5        | 3-1/2"                | 90PX2KREX3505  | 4"                    | 90PX2KREX4005  | 3RAPIDEX80                |

① Entry thread seal not supplied, see *Cable Gland Accessories and Tools*.



# PX2K–REX Series Liquid Resin Barrier Type Cable Glands

## For all Types of Armored cables

Increased Safety, Flameproof, Restricted Breathing and Dust Environment

Zone 1 and 2, Zone 20  
Gas (G) and Dust (D)

### ATEX/IECEX Certifications and Compliances

- **Certification Type PX2K REX**
  - Gas: Zones 1 and 2
    - Type of Protection: Ex d IIC Gb, Ex e IIC Gb, Ex nR IIC Gc
  - Dust: Zone 20
    - Type of Protection: Ex ta IIIC Da
  - Conforming to ATEX 94/9/CE: II 2G 3G 1D
  - Ambient Temperature: -60 °C to +85 °C
  - CE Declaration of Conformity: DC07001
  - ATEX Certificate: Sira 13ATEX1072X, Sira 13ATEX4078X
  - IECEx Certificate: IECEx SIR 13.0027X, IECEx SIM 14.0008X
  - Other Certifications: cCSAus, CCOE/PESO (india)
  - Marine Approval: LLOYDS, DNV, ABS
  - Index of Protection according EN/IEC 60529: IP66, IP67, IP68
  - Deluge Protection Compliance: DTS01:91

### INMETRO Certification

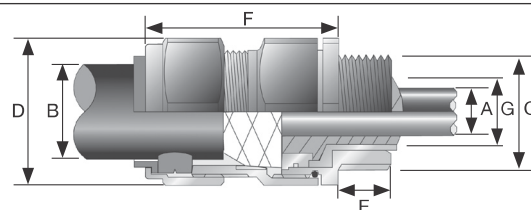
- INMETRO Certificate: TUV 12.2073X

### EURASEC Certification

- TC RU C-GB.г5.05.B.00138



Dimensions in Millimeters



| Cable Gland Size | Maximum Diameter Over Conductors mm A | Overall Cable Diameter mm B |      | Maximum Cable Bedding Diameter mm G | Across Flats mm D | Across Corners mm D | Protrusion Length mm F | PVC Shroud Reference | Cable Gland Weight kg |
|------------------|---------------------------------------|-----------------------------|------|-------------------------------------|-------------------|---------------------|------------------------|----------------------|-----------------------|
|                  |                                       | Min                         | Max  |                                     |                   |                     |                        |                      |                       |
| 20S/16           | 11.7                                  | 6.1                         | 13.1 | 11.7                                | 30.5              | 33.6                | 62.0                   | PVC06                | 0.24                  |
| 20S              | 11.7                                  | 9.5                         | 15.9 | 11.7                                | 30.5              | 33.6                | 62.0                   | PVC06                | 0.23                  |
| 20               | 12.6                                  | 12.5                        | 20.9 | 12.9                                | 30.5              | 33.6                | 63.0                   | PVC06                | 0.24                  |
| 25S              | 17.5                                  | 14.0                        | 22.0 | 17.9                                | 37.5              | 41.3                | 69.5                   | PVC09                | 0.37                  |
| 25               | 17.5                                  | 18.2                        | 26.2 | 17.9                                | 37.5              | 41.3                | 69.5                   | PVC09                | 0.37                  |
| 32               | 23.6                                  | 23.7                        | 33.9 | 23.9                                | 46.0              | 50.6                | 75.0                   | PVC11                | 0.57                  |
| 40               | 30.0                                  | 27.9                        | 40.4 | 30.3                                | 55.0              | 60.5                | 75.0                   | PVC15                | 0.80                  |
| 50S              | 36.6                                  | 35.2                        | 46.7 | 36.9                                | 60.0              | 66.0                | 77.0                   | PVC18                | 0.90                  |
| 50               | 41.0                                  | 40.4                        | 53.0 | 41.3                                | 70.0              | 77.0                | 77.0                   | PVC21                | 1.19                  |
| 63S              | 47.9                                  | 45.6                        | 59.4 | 48.4                                | 75.0              | 82.5                | 79.7                   | PVC23                | 1.39                  |
| 63               | 53.7                                  | 54.6                        | 65.8 | 54.0                                | 80.0              | 88.0                | 80.3                   | PVC25                | 1.41                  |
| 75S              | 59.9                                  | 59.0                        | 72.0 | 60.2                                | 90.0              | 99.0                | 86.8                   | PVC28                | 2.09                  |
| 75               | 64.2                                  | 66.7                        | 78.4 | 64.2                                | 100.0             | 110.0               | 88.3                   | PVC30                | 2.54                  |
| 90               | 75.3                                  | 76.2                        | 90.3 | 75.6                                | 115.0             | 126.5               | 102.21                 | PVC32                | 3.71                  |

ZONE 1 RATED NICKEL PLATED BRASS CABLE GLANDS

Fittings