

E1FX Series Nickel Plated Brass Cable Gland

For Armored Cables (Braid, Tape)

Increased Safety, Flameproof, Restricted Breathing and Dust Environment

Zone 1 and 2, Zone 20
Gas (G) and Dust (D)

Applications

- Cable gland for armored cables (braid, tape). See Options for tape with lead sheath version. Certified for enclosures with the following protection modes:
 - Ex d flameproof IIB or IIC
 - Ex e increased safety
 - Ex nR restricted breathing
 - D dust environment
- Hazardous areas (gas and dust)
- Onshore and offshore

Features

- Cable gland with elastomer seal for use in hazardous areas with braided and tape armor cable.
- The cable gland allows mechanical cable retention and earth continuity via cable armor termination.
- A detachable armor cone and AnyWay clamping ring arrangement facilitates remote make off and enables cable to be disconnected from the equipment.
- Inspection of the armor can be carried out while still maintaining the explosionproof protection mode of the enclosure.
- Sealing technique: inner displacement seal concept and LRS outer seal (load retention seal).

Standard Materials

- Body: nickel plated brass.
- Seal: LSF (Low Smoke Fume) Halogen Free thermoset elastomer.

Options

- Lead sheath version – Replace digit **1** with **2**; Example: 32E1FX5 - 32E2FX5
- Aluminum: replace last digit **5** with **1**
- Shroud, locknut, earth tag, entry thread seal, serrated washers, adaptors and reducers: see *Cable Gland Accessories* pages.

| Cable Gland Size | Metric Thread C | Catalog Numbers | | | | |
|------------------|-----------------|-------------------|-----------------------|----------------|-----------------------|-----------------------|
| | | Standard Metric ① | Standard NPT Thread C | Standard NPT ① | Optional NPT Thread C | Optional NPT Thread ① |
| 20S16 | M20 | 2016E1FX5 | 1/2" | 2016E1FX0505 | 3/4" | 2016E1FX0755 |
| 20S | M20 | 20SE1FX5 | 1/2" | 20SE1FX0505 | 3/4" | 20SE1FX0755 |
| 20 | M20 | 20E1FX5 | 1/2" | 20E1FX0505 | 3/4" | 20E1FX0755 |
| 25S | M25 | 25SE1FX5 | 3/4" | 25SE1FX0755 | 1" | 25SE1FX1005 |
| 25 | M25 | 25E1FX5 | 3/4" | 25E1FX0755 | 1" | 25E1FX1005 |
| 32 | M32 | 32E1FX5 | 1" | 32E1FX1005 | 1-1/4" | 32E1FX1255 |
| 40 | M40 | 40E1FX5 | 1-1/4" | 40E1FX1255 | 1-1/2" | 40E1FX1505 |
| 50S | M50 | 50SE1FX5 | 1-1/2" | 50SE1FX1505 | 2" | 50SE1FX2005 |
| 50 | M50 | 50E1FX5 | 2" | 50E1FX2005 | 2-1/2" | 50E1FX2505 |
| 63S | M63 | 63SE1FX5 | 2" | 63SE1FX2005 | 2-1/2" | 63SE1FX2505 |
| 63 | M63 | 63E1FX5 | 2-1/2" | 63E1FX2505 | 3" | 63E1FX3005 |
| 75S | M75 | 75SE1FX5 | 2-1/2" | 75SE1FX2505 | 3" | 75SE1FX3005 |
| 75 | M75 | 75E1FX5 | 3" | 75E1FX3005 | 3-1/2" | 75E1FX3505 |
| 90 | M90 | 90E1FX5 | 3-1/2" | 90E1FX3505 | 4" | 90E1FX4005 |
| 100 | M100 | 100E1FX5 | 4" | 100E1FX4005 | 5" | 100E1FX5005 |
| 115 | M115 | 115E1FX5 | 4" | 115E1FX4005 | 5" | 115E1FX5005 |
| 130 | M130 | 130E1FX5 | 5" | 130E1FX5005 | 6" | 130E1FX6005 |

① Entry thread seal not supplied, see *Cable Gland Accessories and Tools*.

Shaded catalog numbers are normally stocked items. All other items are made to order.

E1FX Series Nickel Plated Brass Cable Gland

For Armored Cables (Braid, Tape)

Increased Safety, Flameproof, Restricted Breathing and Dust Environment

Zone 1 and 2, Zone 20
Gas (G) and Dust (D)

ATEX/IECEX Certifications and Compliances

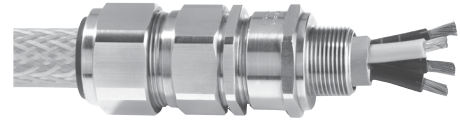
- **Certification Type E1FX/Z - E2FX/Z**
 - Gas: Zones 1 and 2
 - Type of Protection: Ex d IIC Gb, Ex e IIC Gb, Ex nR IIC Gc
 - Dust: Zone 20
 - Type of Protection: Ex ta IIIC Da
 - Conforming to ATEX 94/9/CE: Ⓢ II 2G 3G 1D
 - Ambient Temperature: -60 °C to +130 °C
 - CE Declaration of Conformity: DC07001
 - ATEX Certificate: Sira 13ATEX1071X, Sira 13ATEX4077X
 - IECEx Certificate: IECEx SIR 13.0026X, IECEx SIM 14.0007X
 - Other Certifications: cCSAus, KCC, CCOE/PESO (india)
 - Marine Approval: LLOYDS, DNV, ABS
 - Index of Protection according EN/IEC 60529: IP66
 - Deluge Protection Compliance: DTS01:91 (option available on request only)

INMETRO Certification

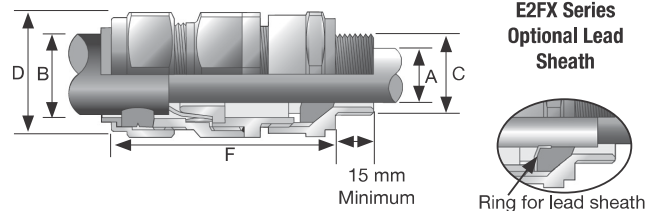
- INMETRO Certificate: TUV 12.0618X

EURASEC Certification

- TC RU C-GB.ГБ.05.В.00138



Dimensions in Millimeters



| Cable Gland Size | Cable Bedding Diameter mm A | | Overall Cable Diameter mm B | | Across Corners mm D | Across Flats mm D | Protrusion Length mm F | PVC Shroud Reference | Cable Gland Weight kg |
|------------------|-----------------------------|-------|-----------------------------|-------|---------------------|-------------------|------------------------|----------------------|-----------------------|
| | Min | Max | Min | Max | | | | | |
| 20S16 | 3.1 | 8.6 | 6.1 | 13.1 | 26.4 | 24.0 | 72.5 | PVC36 | 0.16 |
| 20S | 6.1 | 11.6 | 9.5 | 15.9 | 26.4 | 24.0 | 70.0 | PVC36 | 0.15 |
| 20 | 6.5 | 13.9 | 12.5 | 20.9 | 33.6 | 30.5 | 73.0 | PVC06 | 0.21 |
| 25S | 11.1 | 19.9 | 14.0 | 22.0 | 41.3 | 37.5 | 89.0 | PVC09 | 0.33 |
| 25 | 11.1 | 19.9 | 18.2 | 26.2 | 41.3 | 37.5 | 89.0 | PVC09 | 0.33 |
| 32 | 17.0 | 26.2 | 23.7 | 33.9 | 50.6 | 46.0 | 86.0 | PVC11 | 0.43 |
| 40 | 22.0 | 32.1 | 27.9 | 40.4 | 60.5 | 55.0 | 90.0 | PVC15 | 0.62 |
| 50S | 29.5 | 38.1 | 35.2 | 46.7 | 66.0 | 60.0 | 91.0 | PVC18 | 0.75 |
| 50 | 35.6 | 44.0 | 40.4 | 53.0 | 77.1 | 70.1 | 95.0 | PVC21 | 0.95 |
| 63S | 40.1 | 49.9 | 45.6 | 59.4 | 82.5 | 75.0 | 102.0 | PVC23 | 1.34 |
| 63 | 47.2 | 55.9 | 54.6 | 65.8 | 88.0 | 80.0 | 104.0 | PVC25 | 1.34 |
| 75S | 52.8 | 61.9 | 59.0 | 72.0 | 99.0 | 90.0 | 115.0 | PVC28 | 2.11 |
| 75 | 59.1 | 67.9 | 66.7 | 78.4 | 110.0 | 100.0 | 117.0 | PVC30 | 2.42 |
| 90 | 66.6 | 78.6 | 76.2 | 90.3 | 125.4 | 114.3 | 147.0 | PVC32 | 4.21 |
| 100 | 76.0 | 90.9 | 86.1 | 101.4 | 135.3 | 123.0 | 140.0 | LSF33 | 4.45 |
| 115 | 86.0 | 97.9 | 101.5 | 110.2 | 146.7 | 133.4 | 162.0 | LSF34 | 6.19 |
| 130 | 97.0 | 114.9 | 110.2 | 123.3 | 167.6 | 152.4 | 174.0 | LSF35 | 8.34 |

ZONE 1 RATED NICKEL PLATED BRASS CABLE GLANDS

Fittings