

E1FU Series Triple Certified Cable Glands

For All Types of Armored Cables

Increased Safety, Flameproof, Restricted Breathing and Dust Environment

Zone 1 and 2, Zone 20
Gas (G) and Dust (D)

Applications

- Cable gland certified for enclosures with the following protection modes:
 - Ex d flameproof IIB or IIC
 - Ex e increased safety
 - Ex nR restricted breathing
 - D dust environment
- Hazardous areas (gas and dust).
- Onshore and offshore.

Features

- Provides a flameproof (Type "d") seal on the cable inner bedding.
- Provides a gas tight seal permitting the compatibility of use with restricted breathing (Type "nR") equipment.
- Allows mechanical cable retention and earth continuity via the cable armor termination.
- Separate tightening actions for the inner
- The inner displacement seal and armor terminations are separate tightening actions providing maximum control over the pressure applied to the cable bedding.
- Reversible armor cone and AnyWay clamping ring arrangement facilitates remote make off and enables the cable to be disconnected from the equipment.

- Environmental/load retention seal is provided on the cable outer sheath.
- Stepped cone is suitable for SWA cables. Grooved cone is suitable for all other approved armored cables.
- Sealing technique: inner displacement seal concept and LRS outer seal (load retention seal).

Standard Materials

- Body: nickel plated brass.
- Seal: LSF (Low Smoke Fume) Halogen Free thermoset elastomer.

Options

- Aluminum: replace last digit **5** with **1**
- Shroud, locknut, earth tag, entry thread seal, serrated washers, adaptors and reducers: see *Cable Gland Accessories* pages.

Cable Gland Size	Metric Thread C	Standard Metric ①	Catalog Numbers				Minimum Thread Length mm E	Cable Gland Weight kgs
			Standard NPT Thread C	Standard NPT ①	Optional NPT Thread C	Optional NPT Thread ①		
20S/16	M20	2016E1FU5	1/2"	2016E1FU0505	3/4"	2016E1FU0755	15.0	0.16
20S	M20	20SE1FU5	1/2"	20SE1FU0505	3/4"	20SE1FU0755	15.0	0.15
20	M20	20E1FU5	1/2"	20E1FU0505	3/4"	20E1FU0755	15.0	0.21
25S	M25	25SE1FU5	3/4"	25SE1FU0755	1"	25SE1FU1005	15.0	0.33
25	M25	25E1FU5	3/4"	25E1FU0755	1"	25E1FU1005	15.0	0.33
32	M32	32E1FU5	1"	32E1FU1005	1-1/4"	32E1FU1255	15.0	0.43
40	M40	40E1FU5	1-1/4"	40E1FU1255	1-1/2"	40E1FU1505	15.0	0.62
50S	M50	50SE1FU5	1-1/2"	50SE1FU1505	2"	50SE1FU2005	15.0	0.75
50	M50	50E1FU5	2"	50E1FU2005	2-1/2"	50E1FU2505	15.0	0.95
63S	M63	63SE1FU5	2"	63SE1FU2005	2-1/2"	63SE1FU2505	15.0	1.34
63	M63	63E1FU5	2-1/2"	63E1FU2505	3"	63E1FU3005	15.0	1.34
75S	M75	75SE1FU5	2-1/2"	75SE1FU2505	3"	75SE1FU3005	15.0	2.11
75	M75	75E1FU5	3"	75E1FU3005	3-1/2"	75E1FU3505	15.0	2.42
90	M90	90E1FU5	3-1/2"	90E1FU3505	4"	90E1FU4005	24.0	4.21
100	M100	100E1FU5	4"	100E1FU4005	5"	100E1FU5005	24.0	4.45
115	M115	115E1FU5	4"	115E1FU4005	5"	115E1FU5005	24.0	6.19
130	M130	130E1FU5	5"	130E1FU5005	6"	130E1FU6005	24.0	8.34

① Entry thread seal not supplied, see *Cable Gland Accessories and Tools*.


E1FU Series Triple Certified Cable Glands

For All Types of Armored Cables

Increased Safety, Flameproof, Restricted Breathing and Dust Environment

Zone 1 and 2, Zone 20
Gas (G) and Dust (D)

ATEX/IECEX Certifications and Compliances

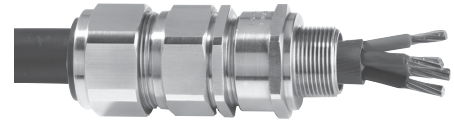
- **Certification Type E1FU**
 - Gas: Zones 1 and 2
 - Type of Protection: Ex d IIC Gb, Ex e IIC Gb, Ex nR IIC Gc
 - Dust: Zone 20
 - Type of Protection: Ex ta IIIC Da
 - Conforming to ATEX 94/9/CE:  II 2G 3G 1D
 - Ambient Temperature: -60 °C to +130 °C
 - CE Declaration of Conformity: DC07001
 - ATEX Certificate: Sira 13ATEX1071X, Sira 13ATEX4077X
 - IECEX Certificate: IECEX SIR 13.0026X, IECEX SIM 14.0007X
 - Other Certifications: cCSAus, KCC, CCOE/PESO (india)
 - Marine Approval: LLOYDS, DNV, ABS
 - Index of Protection according EN/IEC 60529: IP66
 - Deluge Protection Compliance: DTS01:91 (option available on request only)

IINMETRO Certification

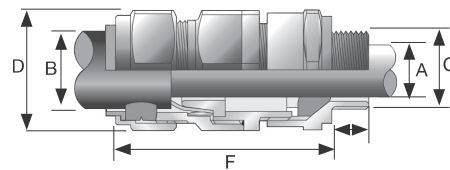
- IINMETRO Certificate: TUV 12.0618X

EURASEC Certification

- TC RU C-GB.Г5.05.B.00138



Dimensions in Millimeters



Cable Gland Size	Cable Bedding Diameter mm A		Overall Cable Diameter mm B		Across Flats mm D	Across Corners mm D	Nominal Protrusion Length mm F	PVC Shroud Reference
	Min	Max	Min	Max				
20S/16	3.1	8.6	6.1	13.1	24.0	26.4	72.5	PVC36
20S	6.1	11.6	9.5	15.9	24.0	26.4	70.0	PVC36
20	6.5	13.9	12.5	20.9	30.5	33.6	73.0	PVC06
25S	11.1	19.9	14.0	22.0	37.5	41.3	89.0	PVC09
25	11.1	19.9	18.2	26.2	37.5	41.3	89.0	PVC09
32	17.0	26.2	23.7	33.9	46.0	50.6	86.0	PVC11
40	22.0	32.1	27.9	40.4	55.0	60.5	90.0	PVC15
50S	29.5	38.1	35.2	46.7	60.0	66.0	91.0	PVC18
50	35.6	44.0	40.4	53.0	70.1	77.1	95.0	PVC21
63S	40.1	49.9	45.6	59.4	75.0	82.5	102.0	PVC23
63	47.2	55.9	54.6	65.8	80.0	88.0	104.0	PVC25
75S	52.8	61.9	59.0	72.0	90.0	99.0	115.0	PVC28
75	59.1	67.9	66.7	78.4	100.0	110.0	117.0	PVC30
90	66.6	78.6	76.2	90.3	114.3	125.4	147.0	PVC32
100	76.0	90.9	86.1	101.4	123.0	135.3	140.0	LSF33
115	86.0	97.9	101.5	110.2	133.4	146.7	162.0	LSF34
130	97.0	114.9	110.2	123.2	152.4	167.6	174.0	LSF35

ZONE 1 RATED NICKEL PLATED BRASS CABLE GLANDS

Fittings

T3 Series Nickel Plated Brass Cable Glands

For all Types of Armored Cables

Increased Safety, Flameproof, Restricted Breathing and Dust Environment

Zone 1 and 2, Zone 20
Gas (G) and Dust (D)

Applications

- Cable gland for all types of armored cable certified for enclosures with the following protection modes:
 - Ex d flameproof IIB or IIC.
 - Ex e increased safety.
 - Ex nR restricted breathing.
 - Ex d flameproof.
- Hazardous areas (gas and dust).
- Onshore and offshore.

Features

- Cable gland with elastomer seal for use in hazardous areas with all types of armored cable.
- This product utilizes a unique Compensating Displacement Seal (CDS) system which provides full compatibility with restricted breathing equipment.
- The CDS system is designed to alleviate any pressure on soft bedded cables.
- The cable gland allows mechanical cable retention and earth continuity via armor termination.
- A reversible armor cone and AnyWay universal clamping ring arrangement allows the cable to be easily disconnected from equipment.

- The cable gland is IP66/68 rated with deluge protection to DTS01: 91.
- Inspection of the armor can be carried out while still maintaining the protection mode of the enclosure.
- Sealing Technique : Inner Displacement Seal and LRS (load retention seal) outer seal.

Standard Materials

- Body: nickel plated brass.
- Seal: LSF (Low Smoke Fume) Halogen Free thermoset elastomer.

Options

- 316L stainless steel version: replace last digit 5 with 4
- Lead sheath version: replace T3 with T3PB
- Aluminum: replace last digit 5 with 1
- Shroud, locknut, earth tag, entry thread seal, serrated washers, adaptors and reducers: see *Cable Gland Accessories* pages.

ZONE 1 RATED NICKEL PLATED BRASS CABLE GLANDS

Cable Gland Size	Metric Thread C	Standard Metric ①	Standard NPT Thread C	Catalog Numbers			Minimum Thread Length mm E
				Standard NPT ①	Optional NPT Thread C	Optional NPT Thread ①	
20S16	M20	2016T35	1/2"	2016T30505	3/4"	2016T30755	15.0
20S	M20	20ST35	1/2"	20ST30505	3/4"	20ST30755	15.0
20	M20	20T35	1/2"	20T30505	3/4"	20T30755	15.0
25S	M25	25ST35	3/4"	25ST30755	1"	25ST31005	15.0
25	M25	25T35	3/4"	25T30755	1"	25T31005	15.0
32	M32	32T35	1"	32T31005	1-1/4"	32T31255	15.0
40	M40	40T35	1-1/4"	40T31255	1-1/2"	40T31505	15.0
50S	M50	50ST35	1-1/2"	50ST31505	2"	50ST32005	15.0
50	M50	50T35	2"	50T32005	2-1/2"	50T32505	15.0
63S	M63	63ST35	2"	63ST32005	2-1/2"	63ST32505	15.0
63	M63	63T35	2-1/2"	63T32505	3"	63T33005	15.0
75S	M75	75ST35	2-1/2"	75ST32505	3"	75ST33005	15.0
75	M75	75T35	3"	75T33005	3-1/2"	75T33505	24.0
90	M90	90T35	3-1/2"	90T33505	4"	90T34005	24.0
100	M100	100T35	4"	100T34005	5"	100T35005	24.0
115	M115	115T35	4"	115T34005	5"	115T35005	24.0
130	M130	130T35	5"	130T35005	6"	130T36005	24.0

① Entry thread seal not supplied, see *Cable Gland Accessories and Tools*.

Shaded catalog numbers are normally stocked items. All other items are made to order.

T3 Series Nickel Plated Brass Cable Glands

For all Types of Armored Cables

Increased Safety, Flameproof, Restricted Breathing and Dust Environment

Zone 1 and 2, Zone 20
Gas (G) and Dust (D)

ATEX/IECEx Certifications and Compliances

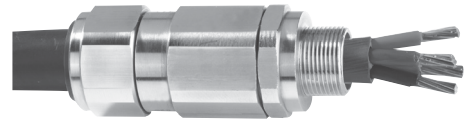
- **Certification Type T3CDS**
 - Gas: Zones 1 and 2
 - Type of Protection: Ex d IIC Gb, Ex e IIC Gb, Ex nR IIC Gc
 - Dust: Zone 20
 - Type of Protection: Ex ta IIIC Da
 - Conforming to ATEX 94/9/CE: Ⓢ II 2G 3G 1D
 - Ambient Temperature: -60 °C to +130 °C
 - CE Declaration of Conformity: DC07001
 - ATEX Certificate: Sira 13ATEX1073X, Sira 13ATEX4079X
 - IECEx Certificate: IECEx SIR 13.0028X, IECEx SIM 14.0007X
 - Other Certifications: cCSAus, UL, CCOE/PESO (india)
 - Marine Approval: LLOYDS, DNV, ABS
 - Index of Protection according EN/IEC 60529: IP66, IP67, IP68
 - Deluge Protection Compliance: DTS01:91

INMETRO Certification

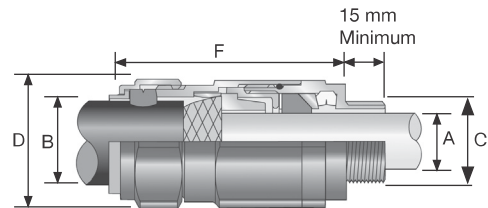
- INMETRO Certificate: TÜV 11.0374X

EURASEC Certification

- TC RU C-GB.ГБ.05.B.00138



Dimensions in Millimeters



Cable Gland Size	Cable Bedding Diameter mm A		Overall Cable Diameter mm B		Across Corners mm D	Across Flats mm D	Protrusion Length mm F	Cable Gland Weight kg
	Min	Max	Min	Max				
20S16	3.1	8.6	6.1	13.1	26.4	24.0	78.7	0.20
20S	6.1	11.6	9.5	15.9	26.4	24.0	78.7	0.20
20	6.5	13.9	12.5	20.9	33.6	30.5	76.2	0.28
25S	11.1	19.9	14.0	22.0	41.3	37.5	88.8	0.44
25	11.1	19.9	18.2	26.2	41.3	37.5	88.7	0.44
32	17.0	26.2	23.7	33.9	50.6	46.0	90.7	0.63
40	22.0	32.1	27.9	40.4	60.5	55.0	93.2	0.91
50S	29.5	38.1	35.2	46.7	66.0	60.0	100.7	1.12
50	35.6	44.0	40.4	53.0	77.1	70.1	105.8	1.60
63S	40.1	49.9	45.6	59.4	82.5	75.0	102.5	1.73
63	47.2	55.9	54.6	65.8	88.0	80.0	105.4	1.78
75S	52.8	61.9	59.0	72.0	99.0	90.0	110.6	2.57
75	59.1	67.9	66.7	78.4	110.0	100.0	120.3	3.33
90	66.6	78.6	76.2	90.3	126.5	115.0	138.9	4.87
100	76.0	90.9	86.1	101.4	139.7	127.0	128.2	4.97
115	86.0	97.9	101.5	110.2	151.8	138.0	161.3	7.72
130	97.0	114.9	110.2	123.2	172.7	157.0	173.3	9.78