

A2F Series Nickel Plated Brass Cable Glands

For Unarmored Cables

Increased Safety, Flameproof, Restricted Breathing and Dust Environment

Zone 1 and 2, Zone 20
Gas (G) and Dust (D)

Applications

- Cable glands for unarmored cable certified for enclosures with the following protection modes:
 - Ex d flameproof IIB or IIC
 - Ex e increased safety
 - Ex nR restricted breathing
 - D dust environment
- Hazardous areas (gas and dust)
- Onshore and offshore.

Features

- Elastomer displacement seal for unarmored cable provides a combined flameproof and weatherproof seal on the outer sheath of the cable.

Standard Materials

- Body: nickel plated brass.
- Seal: LSF (Low Smoke Fume) Halogen Free thermoset elastomer.

Options

- 316L stainless steel version: replace last digit 5 with 4
- Aluminum: replace last digit 5 with 1
- Shroud, locknut, earth tag, entry thread seal, serrated washers, adaptors and reducers: see *Cable Gland Accessories* pages

ATEX/IECEx Certifications and Compliances

- **Certification Type A2F**
 - Gas: Zones 1 and 2
 - Type of Protection: Ex d IIC Gb, Ex e IIC Gb, Ex nR IIC Gc
 - Dust: Zone 20
 - Type of Protection: Ex ta IIC Da
 - Conforming to ATEX 94/9/CE: Ⓢ II 2G 3G 1D
 - Ambient Temperature: -60 °C to +130 °C
 - CE Declaration of Conformity: DC07001
 - ATEX Certificate: Sira 13ATEX1068X, Sira 13ATEX4074X
 - IECEx Certificate: IECEx SIR 13.0023X, IECEx SIM 14.0006
 - Other Certifications: CSA, KCC, CCOE/PESO (India)
 - Marine Approval: LLOYDS, DNV, ABS
 - Index of Protection according EN/IEC 60529: IP66, IP67, IP68
 - Deluge Protection Compliance: DTS01:91

ZONE 1 RATED NICKEL PLATED BRASS CABLE GLANDS

Fittings

Cable Gland Size	Metric Thread C	Catalog Numbers				
		Standard Metric ①	Standard NPT Thread C	Standard NPT ①	Optional NPT Thread C	Optional NPT Thread ①
20S/16	M20	2016A2F5	1/2"	2016A2F0505	3/4"	2016A2F0755
20S	M20	20SA2F5	1/2"	20SA2F0505	3/4"	20SA2F0755
20	M20	20A2F5	1/2"	20A2F0505	3/4"	20A2F0755
25	M25	25A2F5	3/4"	25A2F0755	1"	25A2F1005
32	M32	32A2F5	1"	32A2F1005	1-1/4"	32A2F1255
40	M40	40A2F5	1-1/4"	40A2F1255	1-1/2"	40A2F1505
50S	M50	50SA2F5	1-1/2"	50SA2F1505	2"	50SA2F2005
50	M50	50A2F5	2"	50A2F2005	2-1/2"	50A2F2505
63S	M63	63SA2F5	2"	63SA2F2005	2-1/2"	63SA2F2505
63	M63	63A2F5	2-1/2"	63A2F2505	3"	63A2F3005
75S	M75	75SA2F5	2-1/2"	75SA2F2505	3"	75SA2F3005
75	M75	75A2F5	3"	75A2F3005	3-1/2"	75A2F3505
90	M90	90A2F5	3-1/2"	90A2F3505	4"	90A2F4005
100	M100	100A2F5	4"	100A2F4005	5"	100A2F5005
115	M115	115A2F5	4"	115A2F4005	5"	115A2F5005
130	M130	130A2F5	5"	130A2F5005	6"	130A2F6005

① Entry thread seal not supplied, see *Cable Gland Accessories and Tools*.

Shaded catalog numbers are normally stocked items. All other items are made to order.

A2F Series Nickel Plated Brass Cable Glands

For Unarmored Cables

Increased Safety, Flameproof, Restricted Breathing and Dust Environment

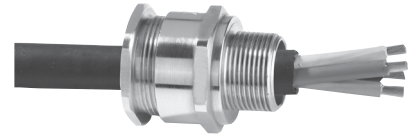
Zone 1 and 2, Zone 20
Gas (G) and Dust (D)

INMETRO Certification

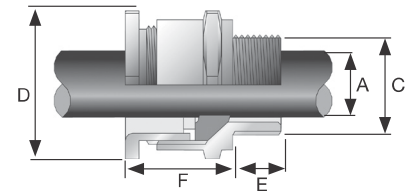
- INMETRO Certificate: TÜV 12.0619X

EURASEC Certification

- TC RU C-GB.ГБ.05.В.00138



Dimensions in Millimeters



Cable Gland Size	Thread Length (Metric) mm E	Thread Length (NPT) mm E	Overall Cable Diameter mm A		Across Flats mm D Max	Across Corners mm D Max	Protrusion Length mm F	PVC Shroud Reference	Cable Gland Weight kg
			Min	Max					
20S/16	15.0	19.9	3.2	8.7	24.0	26.4	25.1	PVC04	0.07
20S	15.0	19.9	6.1	11.7	24.0	26.4	25.1	PVC04	0.06
20	15.0	19.9	6.5	14.0	27.0	29.7	27.2	PVC05	0.07
25	15.0	20.2	11.1	20.0	36.0	39.6	35.5	PVC09	0.13
32	15.0	25.0	17.0	26.3	41.0	45.1	34.2	PVC10	0.15
40	15.0	25.6	23.5	32.2	50.0	55.0	35.1	PVC13	0.20
50S	15.0	26.1	31.0	38.2	55.0	60.5	32.0	PVC15	0.26
50	15.0	26.9	35.6	44.0	60.0	66.0	36.3	PVC18	0.27
63S	15.0	26.9	41.5	49.9	70.5	77.6	33.5	PVC21	0.43
63	15.0	39.9	47.2	55.9	75.0	82.5	35.8	PVC23	0.40
75S	15.0	39.9	54.0	61.9	80.0	88.0	34.2	PVC26	0.52
75	15.0	41.5	61.1	67.9	84.0	92.4	40.6	PVC26	0.50
90	24.0	42.8	66.6	79.9	108.0	118.8	58.3	PVC31	1.60
100	24.0	44.0	76.0	91.0	123.0	135.3	55.2	LSF33	1.78
115	24.0	44.0	86.0	97.9	133.4	146.7	65.2	LSF34	2.67
130	24.0	46.8	97.0	114.9	152.4	167.6	73.9	LSF35	3.80