

A2F Series Stainless Steel Cable Glands

For Unarmored Cables

Increased Safety, Flameproof, Restricted Breathing and Dust Environment

Zone 1 and 2, Zone 20
Gas (G) and Dust (D)

Applications

- Cable glands for unarmored cable certified for enclosures with the following protection modes:
 - Ex d flameproof IIB or IIC
 - Ex e increased safety
 - Ex nR restricted breathing
 - D dust environment
- Hazardous areas (gas and dust)
- Onshore and offshore

Features

- Elastomer displacement seal for unarmored cable provides a combined flameproof and weatherproof seal on the outer sheath of the cable.

Standard Materials

- Body: Stainless Steel.
- Seal: LSF (Low Smoke Fume) Halogen Free thermoset elastomer.

Options

- Nickel plated brass version: replace last digit 4 with 5
- Aluminum: replace last digit 4 with 1
- Shroud, locknut, earth tag, entry thread seal, serrated washers, adaptors and reducers: see *Cable Gland Accessories* pages

ATEX/IECEx Certifications and Compliances

- **Certification Type A2F**
 - Gas: Zones 1 and 2
 - Type of Protection: Ex d IIC Gb, Ex e IIC Gb, Ex nR IIC Gc
 - Dust: Zone 20
 - Type of Protection: Ex ta IIIC Da
 - Conforming to ATEX 94/9/CE: Ⓢ II 2G 3G 1D
 - Ambient Temperature: -60 °C to +130 °C
 - CE Declaration of Conformity: DC07001
 - ATEX Certificate: Sira 13ATEX1068X, Sira 13ATEX4074X
 - IECEx Certificate: IECEx SIR 13.0023X, IECEx SIM 14.0006
 - Other Certifications: CSA, KCC, CCOE/PESO (india)
 - Marine Approval: LLOYDS, DNV, ABS
 - Index of Protection according EN/IEC 60529: IP66, IP67, IP68
 - Deluge Protection Compliance: DTS01:91

Cable Gland Size	Metric Thread C	Catalog Numbers				
		Standard Metric ①	Standard NPT Thread C	Standard NPT ①	Optional NPT Thread C	Optional NPT Thread ①
20S/16	M20	2016A2F4	1/2"	2016A2F0504	3/4"	2016A2F0754
20S	M20	20SA2F4	1/2"	20SA2F0504	3/4"	20SA2F0754
20	M20	20A2F4	1/2"	20A2F0504	3/4"	20A2F0754
25	M25	25A2F4	3/4"	25A2F0754	1"	25A2F1004
32	M32	32A2F4	1"	32A2F1004	1-1/4"	32A2F1254
40	M40	40A2F4	1-1/4"	40A2F1254	1-1/2"	40A2F1504
50S	M50	50SA2F4	1-1/2"	50SA2F1504	2"	50SA2F2004
50	M50	50A2F4	2"	50A2F2004	2-1/2"	50A2F2504
63S	M63	63SA2F4	2"	63SA2F2004	2-1/2"	63SA2F2504
63	M63	63A2F4	2-1/2"	63A2F2504	3"	63A2F3004
75S	M75	75SA2F4	2-1/2"	75SA2F2504	3"	75SA2F3004
75	M75	75A2F4	3"	75A2F3004	3-1/2"	75A2F3504
90	M90	90A2F4	3-1/2"	90A2F3504	4"	90A2F4004
100	M100	100A2F4	4"	100A2F4004	5"	100A2F5004
115	M115	115A2F4	4"	115A2F4004	5"	115A2F5004
130	M130	130A2F4	5"	130A2F5004	6"	130A2F6004

① Entry thread seal not supplied, see *Cable Gland Accessories and Tools*.

A2F Series Stainless Steel Cable Glands

For Unarmored Cables

Increased Safety, Flameproof, Restricted Breathing and Dust Environment

Zone 1 and 2, Zone 20
Gas (G) and Dust (D)

INMETRO Certification

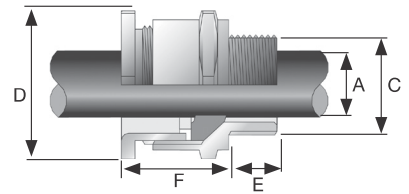
- INMETRO Certificate: TÜV 12.0619-X

EURASEC Certification

- TC RU C-GB.гб.05.B.00138



Dimensions in Millimeters



Cable Gland Size	Minimum Thread Length mm E	Overall Cable Diameter mm A		Across Flats mm D	Across Corners mm D	Protusion Length mm F	PVC Shroud Reference	Cable Gland Weight kg
		Min	Max					
20S/16	15.0	3.3	8.64	22.1	24.13	21.08	PVC04	0.07
20S	15.0	6.1	11.68	22.1	24.13	21.08	PVC04	0.06
20	15.0	6.6	13.97	26.92	29.72	23.88	PVC05	0.07
25	15.0	11.18	20.07	36.07	39.62	25.91	PVC09	0.13
32	15.0	17.02	26.42	40.89	45.21	26.92	PVC10	0.15
40	15.0	23.62	32.26	45.97	50.55	27.94	PVC13	0.20
50S	15.0	30.99	38.1	55.12	60.45	28.96	PVC15	0.26
50	15.0	35.56	44.2	59.94	66.04	29.97	PVC18	0.27
63S	15.0	41.4	50.04	65.02	71.37	29.97	PVC21	0.43
63	15.0	47.24	55.88	70.1	76.96	29.97	PVC23	0.40
75S	15.0	54.1	61.98	80.01	88.65	32.0	PVC26	0.52
75	15.0	61.21	68.07	84.07	92.46	32.0	PVC26	0.50
90	24.0	66.55	80.01	107.95	120.65	43.94	PVC31	1.60
100	24.0	75.95	90.93	114.3	128.52	48.01	LSF33	1.78
115	24.0	86.11	98.04	131.57	146.05	55.12	LSF34	2.67
130	24.0	97.03	115.06	152.4	167.64	61.98	LSF35	3.80

TE1FU Series Stainless Steel Cable Glands

For All Types of Armored Cables

Increased Safety, Flameproof, Restricted Breathing and Dust Environment

Zone 1 and 2, Zone 20
Gas (G) and Dust (D)

Applications

- Cable gland certified for enclosures with the following protection modes:
 - Ex d flameproof IIB or IIC.
 - Ex e increased safety
 - Ex nR restricted breathing
 - D dust environment
- Hazardous areas (gas and dust).
- Onshore and offshore.

Features

- Provides a flameproof (Type "d") seal on the cable inner bedding.
- Provides a gas tight seal permitting the compatibility of use with restricted breathing (Type "nR") equipment.
- Allows mechanical cable retention and earth continuity via the cable armor termination.
- Separate tightening actions for the inner
- The inner displacement seal and armor terminations are separate tightening actions providing maximum control over the pressure applied to the cable bedding.

- Reversible armor cone and AnyWay clamping ring arrangement facilitates remote make off and enables the cable to be disconnected from the equipment.
- Environmental/load retention seal is provided on the cable outer sheath.
- Stepped cone is suitable for SWA cables. Grooved cone is suitable for all other approved armored cables.
- Sealing Technique : Inner Displacement Seal and LRS (load retention seal) outer seal.

Standard Materials

- Body: Stainless Steel.
- Seal: LSF (Low Smoke Fume) Halogen Free thermoset elastomer.

Options

- Aluminum: replace last digit **5** with **1**
- Shroud, locknut, earth tag, entry thread seal, serrated washers, adaptors and reducers: see *Cable Gland Accessories* pages.

Cable Gland Size	Metric Thread C	Standard Metric ①	Catalog Numbers				Minimum Thread Length mm E	Cable Gland Weight kgs
			Standard NPT Thread C	Standard NPT ①	Optional NPT Thread C	Optional NPT Thread ①		
20S/16	M20	2016TE1FU4	1/2"	2016TE1FU0504	3/4"	2016TE1FU0754	15.0	0.15
20S	M20	20STE1FU4	1/2"	20STE1FU0504	3/4"	20STE1FU0754	15.0	0.15
20	M20	20TE1FU4	1/2"	20TE1FU0504	3/4"	20TE1FU0754	15.0	0.23
25S	M25	25STE1FU4	3/4"	25STE1FU0754	1"	25STE1FU1004	15.0	0.34
25	M25	25TE1FU4	3/4"	25TE1FU0754	1"	25TE1FU1004	15.0	0.34
32	M32	32TE1FU4	1"	32TE1FU1004	1-1/4"	32TE1FU1254	15.0	0.55
40	M40	40TE1FU4	1-1/4"	40TE1FU1254	1-1/2"	40TE1FU1504	15.0	0.79
50S	M50	50STE1FU4	1-1/2"	50STE1FU1504	2"	50STE1FU2004	15.0	1.00
50	M50	50TE1FU4	2"	50TE1FU2004	2-1/2"	50TE1FU2504	15.0	1.37
63S	M63	63STE1FU4	2"	63STE1FU2004	2-1/2"	63STE1FU2504	15.0	1.50
63	M63	63TE1FU4	2-1/2"	63TE1FU2504	3"	63TE1FU3004	15.0	1.56
75S	M75	75STE1FU4	2-1/2"	75STE1FU2504	3"	75STE1FU3004	15.0	2.45
75	M75	75TE1FU4	3"	75TE1FU3004	3-1/2"	75TE1FU3504	15.0	3.15
90	M90	90TE1FU4	3-1/2"	90TE1FU3504	4"	90TE1FU4004	24.0	4.62
100	M100	100TE1FU4	4"	100TE1FU4004	5"	100TE1FU5004	24.0	4.95
115	M115	115TE1FU4	4"	115TE1FU4004	5"	115TE1FU5004	24.0	7.60
130	M130	130TE1FU4	5"	130TE1FU5004	6"	130TE1FU6004	24.0	8.73

① Entry thread seal not supplied, see *Cable Gland Accessories and Tools*.

TE1FU Series Stainless Steel Cable Glands

For All Types of Armored Cables

Increased Safety, Flameproof, Restricted Breathing and Dust Environment

Zone 1 and 2, Zone 20
Gas (G) and Dust (D)

ATEX/IECEX Certifications and Compliances

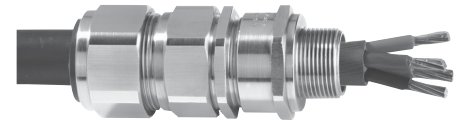
- **Certification Type TE1FU**
 - Gas: Zones 1 and 2
 - Type of Protection: Ex d IIC Gb, Ex e IIC Gb, Ex nR IIC Gc
 - Dust: Zone 20
 - Type of Protection: Ex ta IIIC Da
 - Conforming to ATEX 94/9/CE: Ⓜ II 2G 3G 1D
 - Ambient Temperature: -60 °C to +130 °C
 - CE Declaration of Conformity: DC07001
 - ATEX Certificate: Sira 13ATEX1073X, Sira 13ATEX4079X
 - IECEx Certificate: IECEx SIR 13.0028X, IECEx SIM 14.0007X
 - Other Certifications: LLOYDS, DNV, ABS
 - Index of Protection according EN/IEC 60529: IP66, IP67, IP68
 - Deluge Protection Compliance: DTS01:91

INMETRO Certification

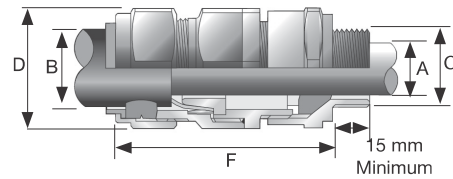
- INMETRO Certificate: TÜV 11.0374-X

EURASEC Certification

- EURASEC TC RU C-GB.Г505.B.00138



Dimensions in Millimeters



Cable Gland Size	Cable Bedding Diameter mm A		Overall Cable Diameter mm B		Across Flats mm D	Across Corners mm D	Protrusion Length mm F	PVC Shroud Reference
	Min	Max	Min	Max				
20S/16	3.1	8.6	6.1	13.1	24.0	26.4	57.3	PVC04
20S	6.1	11.6	9.5	15.9	24.0	26.4	57.3	PVC04
20	6.5	13.9	12.5	20.9	30.5	33.6	61.2	PVC06
25S	11.1	19.9	14.0	22.0	37.5	41.3	74.0	PVC09
25	11.1	19.9	18.2	26.2	37.5	41.3	74.0	PVC09
32	17.0	26.2	23.7	33.9	46.0	50.6	78.2	PVC11
40	22.0	32.1	27.9	40.4	55.0	60.5	81.6	PVC15
50S	29.5	38.1	35.2	46.7	60.0	66.0	88.1	PVC18
50	35.6	44.0	40.4	53.0	70.1	77.1	91.2	PVC21
63S	40.1	49.9	45.6	59.4	75.0	82.4	90.5	PVC23
63	47.2	55.9	54.6	65.8	80.0	88.0	90.3	PVC25
75S	52.8	61.9	59.0	72.0	90.0	99.0	104.7	PVC28
75	59.1	67.9	66.7	78.4	100.0	110.0	110.8	PVC30
90	66.6	78.6	76.2	90.3	115.0	126.5	135.5	PVC32
100	76.0	90.9	86.1	101.4	127.0	139.7	126.8	LSF33
115	86.0	97.9	101.5	110.2	138.0	151.8	157.5	LSF34
130	97.0	114.9	110.2	123.2	157.0	172.7	164.5	LSF35

ZONE 1 RATED STAINLESS STEEL CABLE GLANDS

Fittings