

# 737 Series Adaptors and Reducers

## Cable Gland Accessories

Increased Safety, Flameproof and Dust Environment

Zone 1 and Zone 20  
Gas (G) and Dust (D)

### Applications

- A wide range of thread conversion adaptors and reducers for hazardous area applications. Used to connect cable entry devices and equipment having dissimilar threads.
- Care should be taken to ensure that a suitable sealing gasket is also selected and installed, where applicable, to ensure that an effective seal is made at the entry, thereby maintaining the integrity of the enclosure or equipment IP rating.



### Features

- Wide range of thread types and sizes.

### Standard Materials

- Nickel plated brass.

### Options

- Aluminum: replace last digit 5 with 1
- Brass version: remove last digit 5
- 316L stainless steel version: replace last digit 5 with 4
- Shroud, locknut, earth tag, entry thread seal, serrated washers, adaptors and reducers: see *Cable Gland Accessories* pages.

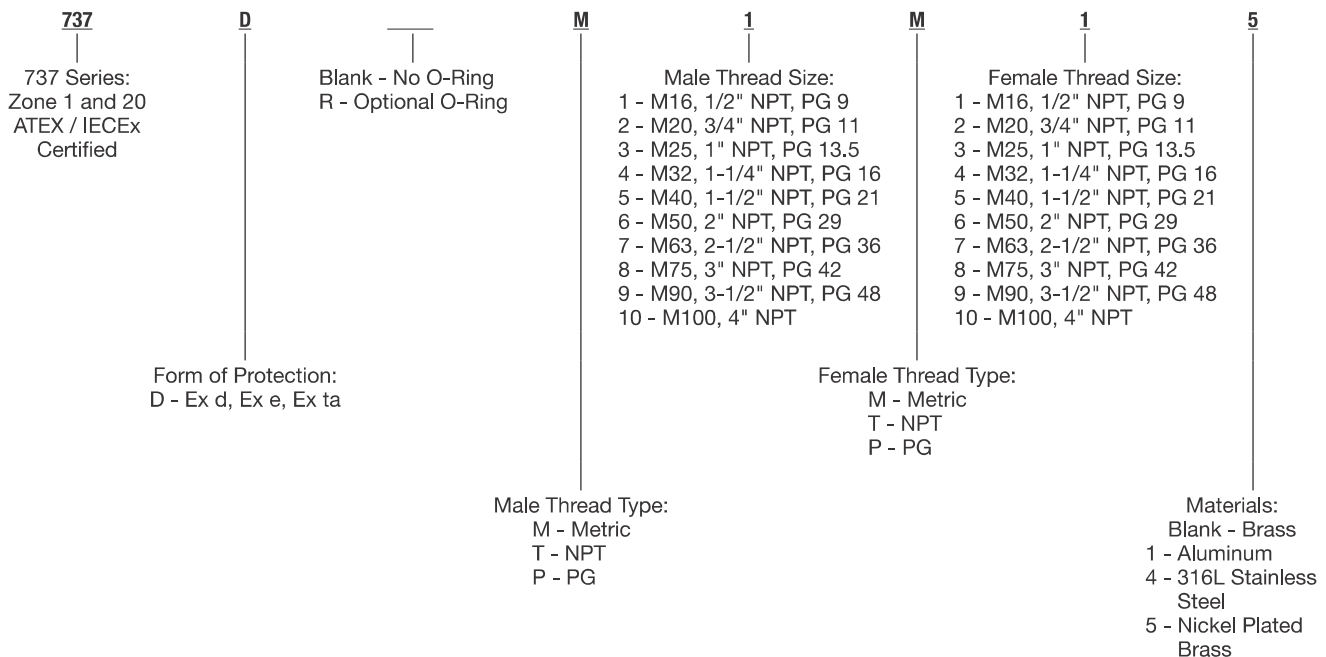
### ATEX/IECEX Certifications and Compliances

- **Certification Type 737**
  - Gas: Zones 1
    - Type of Protection: Ex d IIC Gb, Ex e IIC Gb
  - Dust: Zone 20
    - Type of Protection: Ex ta IIIC Da
  - Conforming to ATEX 94/9/CE: Ⓜ II 2G 1D
  - Operating Temperature: -60 °C to +200 °C (Metallic)
  - CE Declaration of Conformity: DC07001
  - ATEX Certificate: Sira 13ATEX1265X
  - IECEx Certificate: IECEx SIR 13.0094X
  - Other Certifications: UL, cCSAus
  - Marine Approval: LLOYDS, DNV, ABS
  - Index of Protection according EN/IEC 60529: IP66, IP67, IP68 (when fitted with seal)

### EURASEC Certification

- TC RU C-GB.ГБ.05.B.00138

### Catalog Numbering Guide



① IP68 with entry thread seal or O-Ring not supplied, see *Cable Gland Accessories and Tools*.

# 737 Series Adaptors and Reducers

## Cable Gland Accessories

Increased Safety, Flameproof and Dust Environment

Zone 1 and Zone 20  
Gas (G) and Dust (D)

Size	Male Thread													Female Thread																
	M16	M20	M25	M32	M40	M50	M63	M75	PG7	PG9	PG11	PG13.5	PG16	PG21	PG29	PG36	PG42	PG48	1/2" NPT/NPS (M)	3/4" NPT/NPS (M)	1" NPT/NPS (M)	1-1/4" NPT/NPS (M)	1-1/2" NPT/NPS (M)	2" NPT/NPS (M)	2-1/2" NPT/NPS (M)	3" NPT/NPS (M)	3-1/2" NPT/NPS (M)	4" NPT/NPS (M)		
M16																														
M20																														
M25																														
M32																														
M40																														
M50																														
M63																														
M75																														
PG7																														
PG9																														
PG11																														
PG13.5																														
PG16																														
PG21																														
PG29																														
PG36																														
PG42																														
PG48																														
1/2" NPT/NPS (M)																														
3/4" NPT/NPS (M)																														
1" NPT/NPS (M)																														
1-1/4" NPT/NPS (M)																														
1-1/2" NPT/NPS (M)																														
2" NPT/NPS (M)																														
2-1/2" NPT/NPS (M)																														
3" NPT/NPS (M)																														
3-1/2" NPT/NPS (M)																														
4" NPT/NPS (M)																														

Ex d/Ex e reducer  
  Ex d/Ex e adaptor  
  Non-certified adaptor

Thread Table

	Metric ①	NPT	PG
1	M16	1/2"	PG9
2	M20	3/4"	PG11
3	M25	1"	PG13.5
4	M32	1-1/4"	PG16
5	M40	1-1/2"	PG21
6	M50	2"	PG29
7	M63	2-1/2"	PG36
8	M75	3"	PG42
9	M90	3-1/2"	PG48
10	M100	4"	-

① IP68 with entry thread seal or O-Ring (not supplied), see Cable Gland Accessories and Tools.

# 737 Series Adaptors and Reducers

## Cable Gland Accessories

Increased Safety, Flameproof and Dust Environment

Zone 1 and Zone 20  
Gas (G) and Dust (D)

Reducers (Nickel Plated Brass)			Adaptors (Nickel Plated Brass)		
Male Thread	Female Thread	Catalog Number	Male Thread	Female Thread	Catalog Number
M20	M16	737DM2M15	M16	M20	737DM1M25
M25	M16	737DM3M15	M20	M25	737DM2M35
M25	M20	737DM3M25	M25	M32	737DM3M45
M32	M20	737DM4M25	M32	M40	737DM4M55
M32	M25	737DM4M35	M40	M50	737DM5M65
M40	M25	737DM5M35	M50	M63	737DM6M75
M40	M32	737DM5M45	M63	M75	737DM7M85
M50	M32	737DM6M45	M75	M90	737DM8M95
M50	M40	737DM6M55	M90	M100	737DM9M105
M63	M40	737DM7M55	M16	1/2	737DM1T15
M63	M50	737DM7M65	M20	1/2	737DM2T15
M75	M50	737DM8M65	M20	3/4	737DM2T25
M75	M63	737DM8M75	M25	3/4	737DM3T25
1/2	3/4	737DT1T25	M25	1	737DM3T35
3/4	1/2	737DT2T15	M32	1	737DM4T35
1	1/2	737DT3T15	M32	1-1/4	737DM4T45
1	3/4	737DT3T25	M40	1-1/4	737DM5T45
1-1/4	3/4	737DT4T25	M40	1-1/2	737DM5T55
1-1/4	1	737DT4T35	M50	1-1/2	737DM6T55
1-1/2	1	737DT5T35	M50	2	737DM6T65
1-1/2	1-1/4	737DT5T45	M63	2	737DM7T65
2	1-1/4	737DT6T45	M63	2-1/2	737DM7T75
2	1-1/2	737DT6T55	M75	2-1/2	737DM8T75
2-1/2	1-1/2	737DT7T55	M75	3	737DM8T85
2-1/2	2	737DT7T65	1/2	M20	737DT1M25
3	2	737DT8T65	3/4	M20	737DT2M25
3	2-1/2	737DT8T75	3/4	M25	737DT2M35
3-1/2	2-1/2	737DT9T75	1	M25	737DT3M35
3-1/2	3	737DT9T85	1	M32	737DT3M45
4	3	737DT10T85	1-1/4	M32	737DT4M45
4	3-1/2	737DT10T95	1-1/4	M40	737DT4M55
			1-1/2	M40	737DT5M55
			1-1/2	M50	737DT5M65
			2	M50	737DT6M65
			2	M63	737DT6M75
			2-1/2	M63	737DT7M75
			2-1/2	M75	737DT7M85
			3	M75	737DT8M85

ACCESSORIES

Fittings

① IP68 with entry thread seal or O-Ring not supplied, see Cable Gland Accessories and Tools.

Shaded catalog numbers are normally stocked items. All other items are made to order.

# BVE Series Blanking Plugs

## Cable Gland Accessories

Increased Safety, Restricted Breathing and Dust Environment

Zone 1 and 2, Zone 21 and 22  
Gas (G) and Dust (D)

### Applications

- A comprehensive range of plastic blanking plugs designed to close any unused entries in electrical equipment.
- Entry thread sealing washer supplied.

### Features

- Catering to hazardous areas, the range covers all metric threads from M16 to M50.
- Certification Ex e.

### Standard Materials

- Nylon

### ATEX Certifications and Compliances

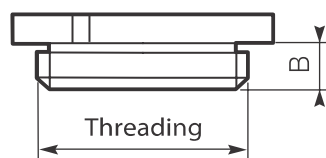
- **Certification Type BVe**
  - Gas: Zones 1 and 2
    - Type of Protection: Ex e II
  - Dust: Zone 21 and 22
    - Type of Protection: Ex tD
  - Conforming to ATEX 94/9/CE: Ⓢ II 2GD
  - Ambient Temperature: -40 °C to +55 °C
  - CE Declaration of Conformity: 5C218
  - ATEX Certificate: LCIE 03 ATEX 0011U
  - IECEx Certificate: IECEx LCI 04.0027U
  - Index of Protection according EN/IEC 60529: IP66

### INMETRO Certification

- INMETRO Certificate: BVC 11.0600-U



### Dimensions



Dimensions mm B	Metric	Weight kg	Volume	Catalog Number
–	M16	0.10	0.03	095485
12.0	M20	0.10	0.03	095714
12.0	M25	0.10	0.03	095715
12.0	M32	0.10	0.03	095486
12.0	M40	0.10	0.07	095487
–	M50	0.20	0.07	095488

Shaded catalog numbers are normally stocked items. All other items are made to order.

# 757 Series Blanking Plugs

## Cable Gland Accessories

Increased Safety, Flameproof and Dust Environment

Zone 1 and Zone 20  
Gas (G) and Dust (D)

### Applications

- Blanking plugs are designed for use from the outside of the enclosure to permanently or temporarily close any unused entries.
- Idea for use on flameproof, increased safety electrical equipment in hazardous areas.
- In general, care should be taken to ensure that a suitable entry thread sealing washer is also selected and installed, where applicable, to ensure that an effective seal is made at the entry, thereby maintaining the integrity of the enclosure or equipment I.P. rating.

### Features

- Catering to hazardous area applications, the range of products covers a number of different design types which are supplied in both metal and plastic (Exe only).
- Hexagon head allows for the installation or remove of the plug with either an open ended or ring type spanner or wrench.

### Standard Materials

- Nickel plated brass

### Options

- Brass version: remove last digit 5
- 316L stainless steel version: replace last digit 5 with 4
- Plastic (see BVE series)

### Optional Accessories

- Shroud, locknut, earth tag, entry thread seal, serrated washers, adaptors and reducers: see *Cable Gland Accessories* pages.

### ATEX/IECEx Certifications and Compliances

- **Certification Type 757**
  - Gas: Zones 1
    - Type of Protection: Ex d IIC Gb, Ex e IIC Gb
  - Dust: Zone 20
    - Type of Protection: Ex ta IIIC Da
  - Conforming to ATEX 94/9/CE: Ⓢ II 2G 1D
  - Operating Temperature: -60 °C to +200 °C (Metallic)
  - CE Declaration of Conformity: DC07001
  - ATEX Certificate: Sira 13ATEX1265X
  - IECEx Certificate: IECEx SIR 13.0094X
  - Other Certifications: UL, cCSAus
  - Marine Approval: LLOYDS, DNV, ABS
  - Index of Protection according EN/IEC 60529: IP66 or IP68 with seal

### INMETRO Certification

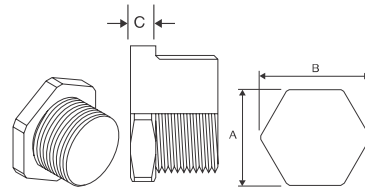
- INMETRO Certificate: TÜV 12.1333X

### EURASEC Certification

- TC RU C-GB.ГБ.05.B.00138



### Dimensions



① IP68 with entry thread seal or O-Ring not supplied, see *Cable Gland Accessories and Tools*.

# 757 Series Blanking Plugs

## Cable Gland Accessories

Increased Safety, Flameproof and Dust Environment

Zone 1 and Zone 20  
Gas (G) and Dust (D)

### Catalog Numbering Guide

**757**  
757 Series:  
Zone 1 and 20  
ATEX / IECEx Certified

**D**  
Type:  
D - Ex d and Ex e

**M**  
Male Thread Type:  
M - Metric  
T - NPT  
P - PG

**1**  
Male Thread Size:  
1 - M16 or 1/2" NPT  
2 - M20 or 3/4" NPT  
3 - M25 or 1" NPT  
4 - M32 or 1-1/4" NPT  
5 - M40 or 1-1/2" NPT  
6 - M50 or 2" NPT  
7 - M63 or 2-1/2" NPT  
8 - M75 or 3" NPT  
9 - M90 or 3-1/2" NPT  
10 - M100 or 4" NPT

**5**  
Material:  
Blank - Brass  
4 - 316L Stainless Steel  
5 - Nickel Plated Brass

### Dimensions mm

Flats A	Corners B	C	Catalog Numbers (Nickel Plated Brass)				Weight kg
			Metric ②		NPT		
24.0	26.0	5.0	M16 x 1.5	<b>757DM15</b>	1/2"	<b>757DT15</b>	0.05
24.0	26.0	5.0	M20 x 1.5	<b>757DM25</b>	3/4"	<b>757DT25</b>	0.07
30.0	33.0	5.0	M25 x 1.5	<b>757DM35</b>	1"	<b>757DT35</b>	0.10
36.0	40.0	5.0	M32 x 1.5	<b>757DM45</b>	1-1/4"	<b>757DT45</b>	0.16
46.0	51.0	6.0	M40 x 1.5	<b>757DM55</b>	1-1/2"	<b>757DT55</b>	0.32
55.0	61.0	6.0	M50 x 1.5	<b>757DM65</b>	2"	<b>757DT65</b>	0.42
70.0	78.0	6.0	M63 x 1.5	<b>757DM75</b>	2-1/2"	<b>757DT75</b>	0.63
80.0	89.0	6.0	M75 x 1.5	<b>757DM85</b>	3"	<b>757DT85</b>	0.98
95.0	106.0	6.0	M90 x 2	<b>757DM95</b>	3-1/2"	<b>757DT95</b>	1.35
110.0	123.0	6.0	M100 x 2	<b>757DM105</b>	4"	<b>757DT105</b>	1.60

### Thread Table

	Metric	NPT	PG
1	M16	1/2"	PG9
2	M20	3/4"	PG11
3	M25	1"	PG13.5
4	M32	1-1/4"	PG16
5	M40	1-1/2"	PG21
6	M50	2"	PG29
7	M63	2-1/2"	PG36
8	M75	3"	PG42
9	M90	3-1/2"	PG48
10	M100	-	-

① IP68 with entry thread seal or O-Ring not supplied, see Cable Gland Accessories and Tools.

② Entry thread seal not supplied, see Cable Gland Accessories and Tools.

**Shaded catalog numbers are normally stocked items. All other items are made to order.**

# 747 Series Stopper Plugs

## Cable Gland Accessories

Increased Safety, Flameproof and Dust Environment

Zone 1 and Zone 20  
Gas (G) and Dust (D)

### Applications

- Stopper plug is designed for use from the outside of the enclosure to permanently or temporarily close any unused entries.
- Idea for use on flameproof electrical equipment in hazardous areas.
- In general, care should be taken to ensure that a suitable entry thread sealing washer is also selected and installed, where applicable, to ensure that an effective seal is made at the entry, thereby maintaining the integrity of the enclosure or equipment I.P. rating.

### Features

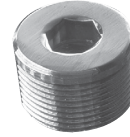
- Catering to both Industrial and Hazardous Area applications the range covers a number of different metallic and non-metallic (e.g. Nylon) forms.
- Compensating Displacement Seal (CDS) system allows for use with Restricted Breathing equipment.
- Available with both external (Type A) or internal (Type B) Allen Key design.
- Internal Allen Key design is considered tamper proof. Once the equipment has been de-energized and the terminal chamber cover removed it can be removed from the inside.

### Standard Materials

- Brass fully nickel plated

### Options

- Aluminum: replace suffix -5 with 1
- 316L stainless steel: replace suffix -5 with 4
- Nylon: replace suffix -5 with 2
- Type 'B': replace 'A' with 'B'



### ATEX/IECEx Certifications and Compliances

- **Certification Type 747**
  - Gas: Zones 1
  - Type of Protection: Ex d IIC Gb (except Nylon), Ex e IIC Gb
  - Dust: Zone 20
  - Type of Protection: Ex ta IIIC Da
  - Conforming to ATEX 94/9/CE: Ⓜ II 2G 1D
  - Operating Temperature: -60 °C to +200 °C (Metallic) and -20 °C to +60 °C (Nylon)
  - CE Declaration of Conformity: DC07001
  - ATEX Certificate: Sira 13ATEX1265X
  - IECEx Certificate: IECEx SIR 13.0094X
  - Other Certifications: UL, cCSAus
  - Marine Approval: LLOYDS, DNV, ABS
  - Index of Protection according EN/IEC 60529: IP66

### INMETRO Certification

- INMETRO Certificate: TÜV 12.1333X

### EURASEC Certification

- TC RU C-GB.ГБ.05.В.00138

	767 Series Male Thread Size	Allen Key size A/F	Minimum Thread Length mm	Type 'A' Nickel Plated Brass Catalog Number
<p>Ex 'd' Recessed Stopper Plug Type 'A'</p>	M16	M8	15	747DAM15
	M20	M10	15	747DAM25
	M25	M10	15	747DAM35
	M32	M10	15	747DAM45
	M40	M10	15	747DAM55
	M50	M10	15	747DAM65
	M63	M14	15	747DAM75
	M75	M14	15	747DAM85
<p>Ex 'd' Recessed Stopper Plug Type 'B'</p>	M90	M14	24	747DAM95
	1/2 NPT			747DAT15
	3/4 NPT			747DAT25
	1 NPT			747DAT35
	1-1/4 NPT			747DAT45
	1-1/2 NPT			747DAT55
	2 NPT			747DAT65
2-1/2 NPT			747DAT75	
3 NPT			747DAT85	

# 767 Series Stopper Plugs

## Cable Gland Accessories

Increased Safety and Flameproof.

Zone 1 and 2, Zone 21 and 22  
Gas (G) and Dust (D)

### Applications

- Stopper plug is designed for use from the outside of the enclosure to permanently or temporarily close any unused entries.
- Idea for use on flameproof, increased safety electrical equipment in hazardous areas.
- In general, care should be taken to ensure that a suitable entry thread sealing washer is also selected and installed, where applicable, to ensure that an effective seal is made at the entry, thereby maintaining the integrity of the enclosure or equipment I.P. rating.

### Features

- Catering to both Industrial and Hazardous Area applications the range covers a number of different metallic and non-metallic (e.g. Nylon) forms.
- Features a dome head with an Allen Key.
- Optional integral entry thread "O" Ring seal is available.

### Standard Materials

- Brass fully nickel plated

### Options

- Aluminum: replace suffix -5 with 1
- 316L stainless steel: replace suffix -5 with 4
- Nylon: replace suffix -5 with 2
- Optional O-Ring: replace **D** with **DR**
- IP68 when fitted with an O-Ring entry thread sealing washer



### ATEX/IECEX Certifications and Compliances

- **Certification Type 767**
  - Gas: Zones 1
    - Type of Protection: Ex d IIC Gb (except Nylon), Ex e IIC Gb
  - Dust: Zone 20
    - Type of Protection: Ex ta IIC Da
  - Conforming to ATEX 94/9/CE: Ⓢ II 2G 1D
  - Operating Temperature: -60 °C to +200 °C (Metallic) and -20 °C to +60 °C (Nylon)
  - CE Declaration of Conformity: DC07001
  - ATEX Certificate: Sira 13ATEX1265X
  - IECEx Certificate: IECEx SIR 13.0094X
  - Other Certifications: UL, cCSAus
  - Marine Approval: LLOYDS, DNV, ABS
  - Index of Protection according EN/IEC 60529: IP66 or IP68 with seal

### INMETRO Certification

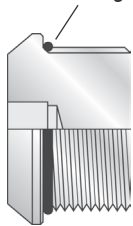
- INMETRO Certificate: TÜV 12.1333X

### EURASEC Certification

- TC RU C-GB.ГБ.05.B.00138

	Male Thread Size	Allen Key size A/F	Head diameter in mm	Nickel Plated Brass Catalog Number
	M16	M8	22.0	767DM15
	M20	M10	27.0	767DM25
	M25	M10	30.0	767DM35
	M32	M10	36.0	767DM45
	M40	M10	46.0	767DM55
	M50	M10	55.0	767DM65
	M63	M14	65.0	767DM75
	M75	M14	80.0	767DM85
	M90	M14	95.0	767DM95
	1/2"NPT			767DT15
	3/4"NPT			767DT25
	1"NPT			767DT35
	1-1/4"NPT			767DT45
	1-1/2"NPT			767DT55
	2"NPT			767DT65
	2-1/2"NPT			767DT75
	3"NPT			767DT85

Optional 'O' Ring ①



Mushroom Head Stopper Plug

① For optional O-Ring, change **D** to **DR** in catalog number. Contact your factory representative for price and availability.